

# HAMPTON ROADS LONG-RANGE TRANSPORTATION PLAN

**DALE M. STITH**

**HRTPO PRINCIPAL TRANSPORTATION PLANNER**

Presented to Chief Administrative Officers

May 4, 2022





# PRESENTATION OUTLINE

- **MPO CORE FUNCTIONS**
- **LRTP OVERVIEW**  
Importance/Relevance  
Position for Funding Opportunities
- **2045 LRTP**  
Plan Highlights  
Challenges
- **2050 LRTP**  
Planning Milestones  
Key Input Opportunities and Considerations



# HRTPO CORE FUNCTIONS



ESTABLISH A SETTING FOR  
EFFECTIVE REGIONAL DECISION  
MAKING



EVALUATE TRANSPORTATION  
ALTERNATIVES



MAINTAIN A FISCALLY  
CONSTRAINED LONG-RANGE  
TRANSPORTATION PLAN (LRTP)



DEVELOP A FISCALLY  
CONSTRAINED TRANSPORTATION  
IMPROVEMENT PROGRAM (TIP)



INVOLVE THE PUBLIC IN THE  
TRANSPORTATION PLANNING  
PROCESS

# HRTPO CORE FUNCTIONS



ESTABLISH A SETTING FOR  
EFFECTIVE REGIONAL DECISION  
MAKING



EVALUATE TRANSPORTATION  
ALTERNATIVES



MAINTAIN A FISCALLY  
CONSTRAINED LONG-RANGE  
TRANSPORTATION PLAN (LRTP)



DEVELOP A FISCALLY  
CONSTRAINED TRANSPORTATION  
IMPROVEMENT PROGRAM (TIP)



INVOLVE THE PUBLIC IN THE  
TRANSPORTATION PLANNING  
PROCESS



# LONG-RANGE TRANSPORTATION PLAN

- The LRTP is the region's transportation blueprint
- 20-year timeframe, updated every 5 years
- Must be fiscally constrained
- All regionally significant transportation projects must be included in the LRTP, regardless of funding source



Assess Current Conditions



Forecast Growth - Assess Future Conditions



Evaluate and Prioritize (Across Scenarios)



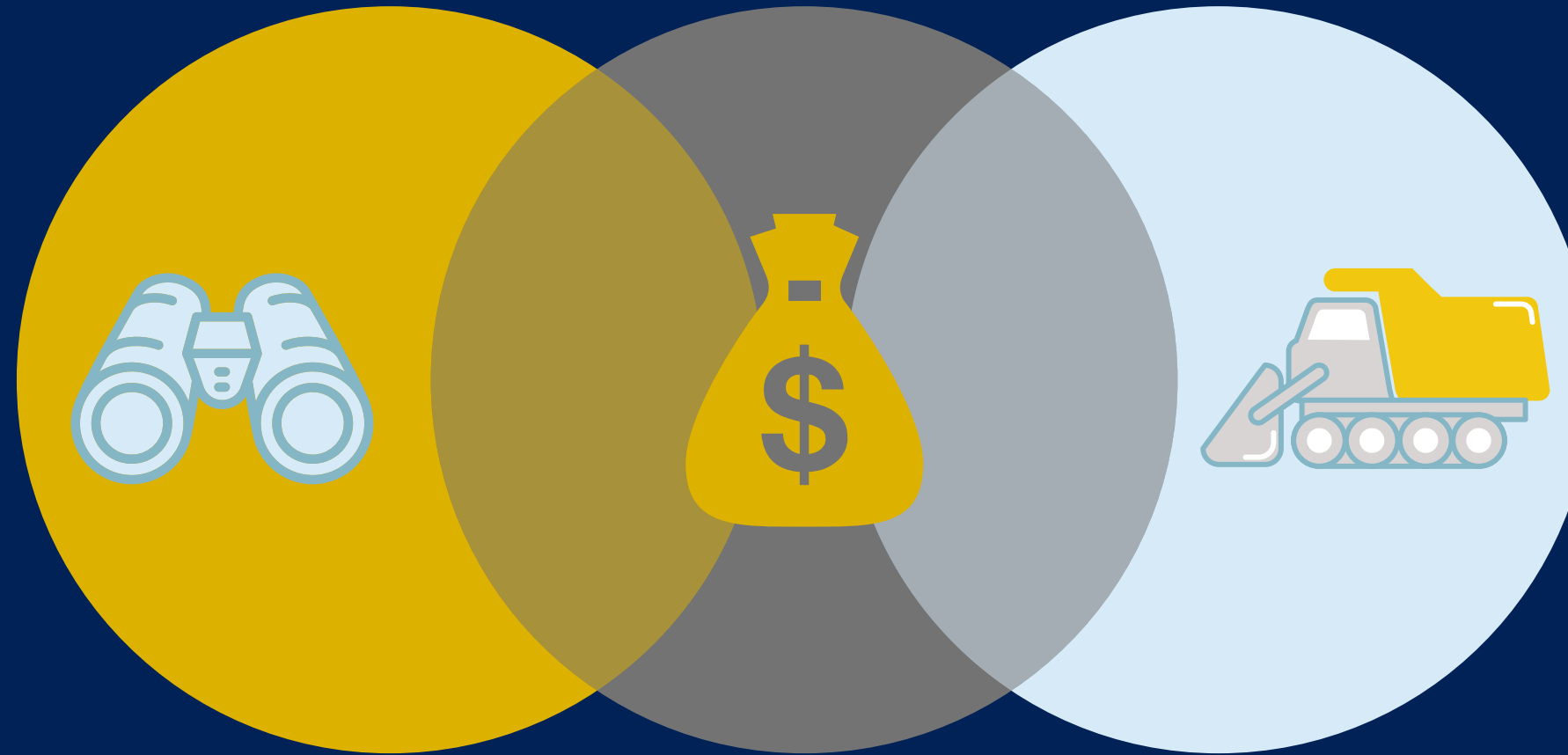
Identify Funding (Fiscal Constraint)

# VISION-LRTP-TIP RELATIONSHIP

## POSITIONING PROJECTS FOR FUNDING

### VISION PLAN

Unfunded  
transportation needs  
for the region



### TIP

4-Year funding plan  
tracking project  
implementation

### LRTP

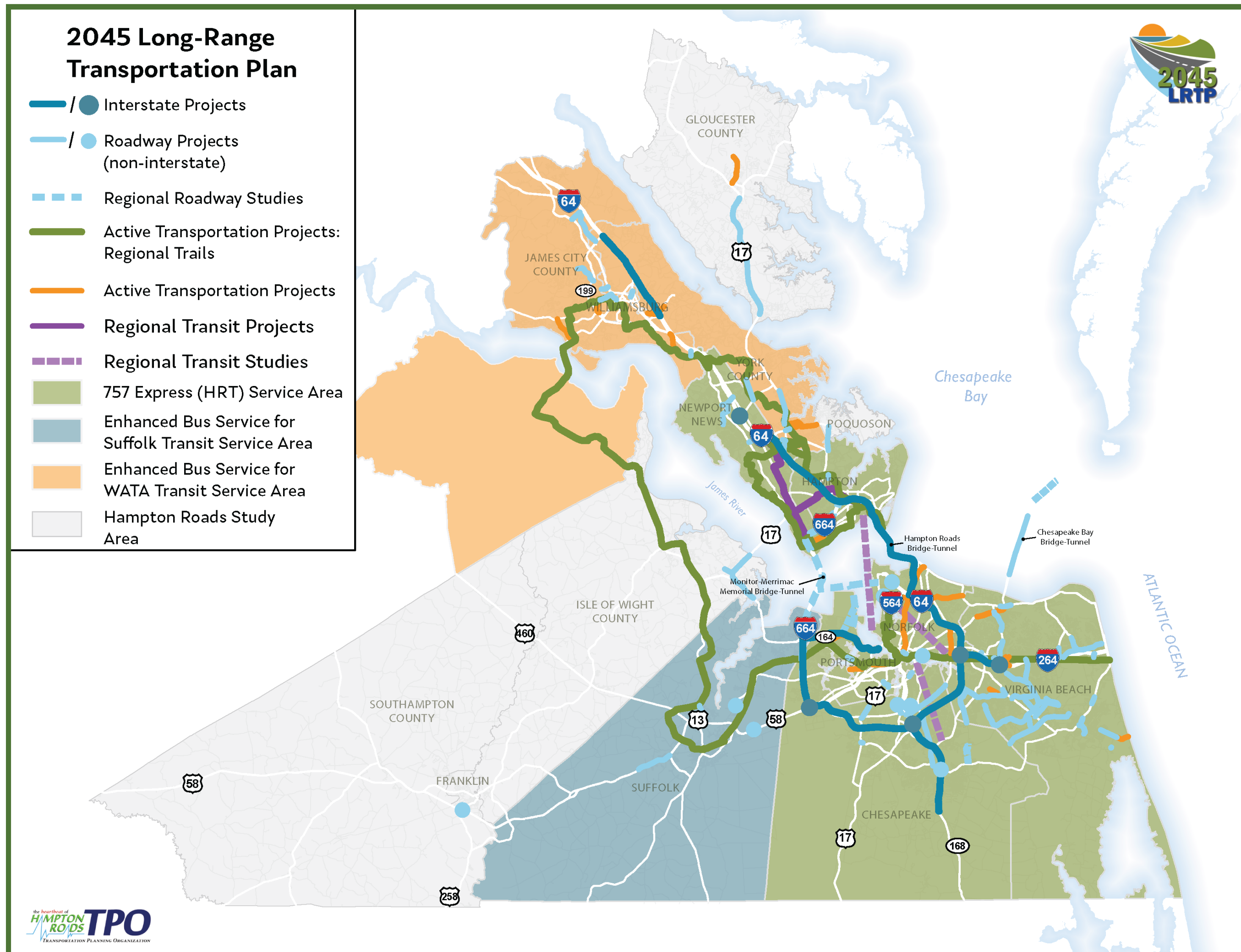
20-Year transportation blueprint  
identifying projects the region can  
reasonably afford



# 2045 LRTP

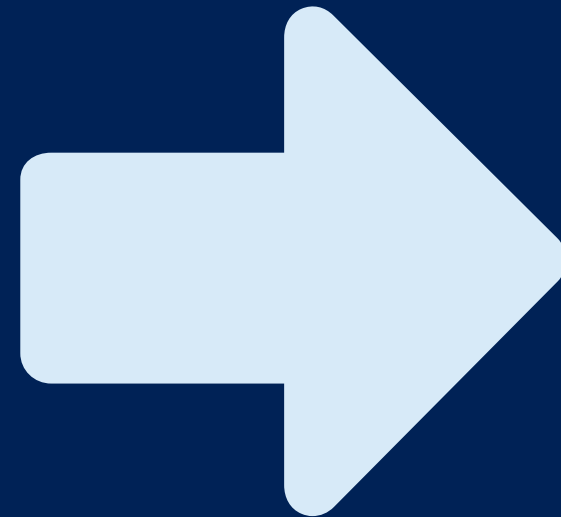
**\$17  
Billion**  
MAINTENANCE/  
SYSTEM  
PRESERVATION

**\$13.7  
Billion**  
ADDITIONAL  
MULTIMODAL  
INVESTMENTS





**Adopted  
June 2021**



**HAMPTON ROADS  
2050  
LRTP**

**Adoption by  
June 2026**



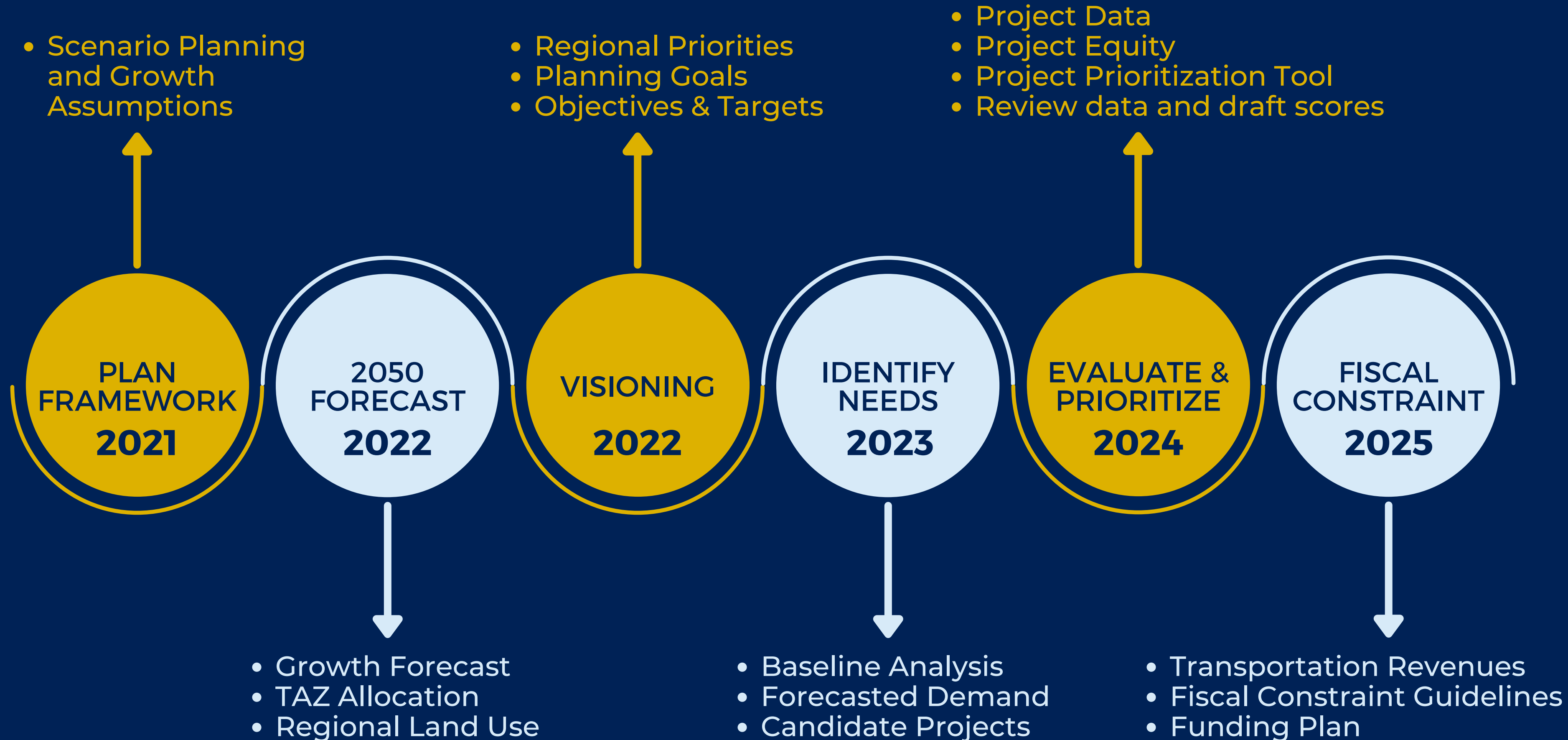
# LESSONS LEARNED

- Collaboration challenges
  - Regular attendance and engagement at LRTP Subcommittee meetings
- Lack of timely input
  - TAZ allocations
  - Submission of candidate projects
  - Project input data
- Stakeholders ensuring project consistency with locality plans
- Communicating priorities internally with management and with HRTPO staff in a timely manner



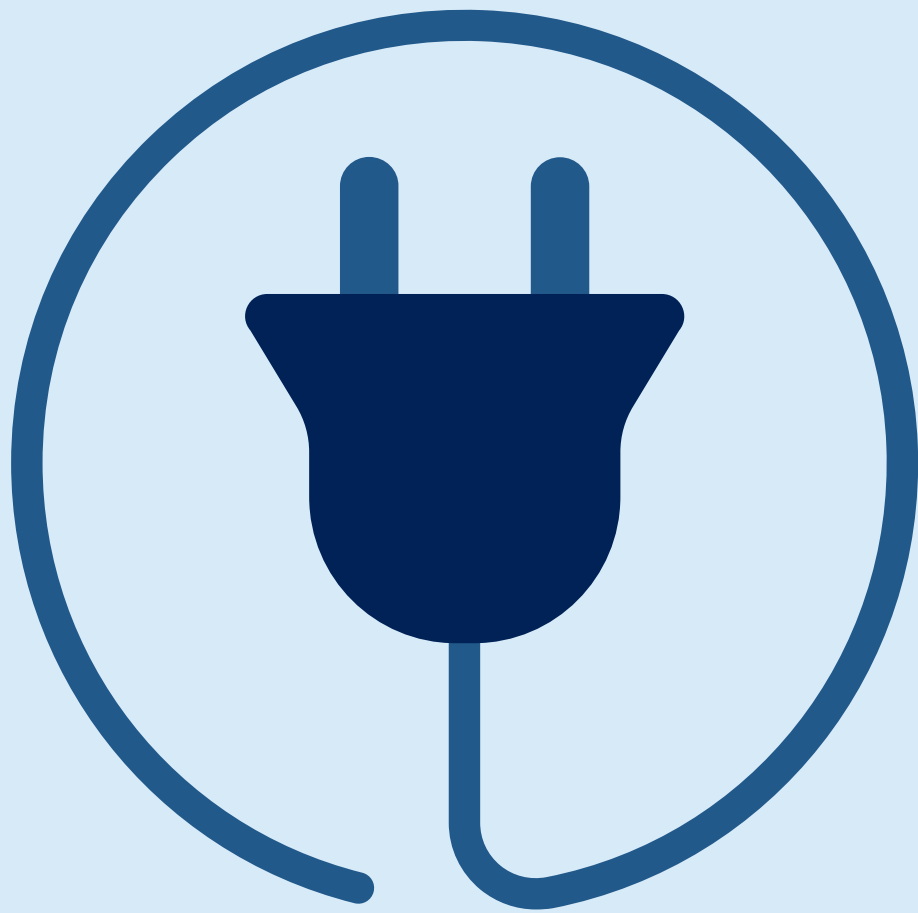


# LRTP PLANNING MILESTONES



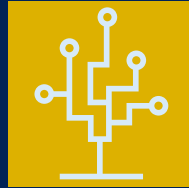


# KEY INPUT OPPORTUNITIES AND CONSIDERATIONS



## 2050 FORECAST AND TAZ ALLOCATION

- Drives traffic forecasts



## PROVIDE UPDATED DATA (LAND USE, TRANSPORTATION DATA, ETC.)

- Important in identifying transportation needs/demand



## SUBMIT CANDIDATE PROJECTS AND PROJECT DATA

- Submit locality priorities as candidate projects
- Better data produces better scores



## AWARENESS OF DEADLINES

- LRTP process is driven by Federal deadlines



## ENSURE LEADERSHIP AWARENESS, BUY-IN, and COMMITMENT

- Project consistency with locality/regional/state plans and leadership goals

# THANK YOU

## 2045 LRTP WEBPAGE

[https://www.hrtpo.org/page/2045-long\\_range-transportation-plan/](https://www.hrtpo.org/page/2045-long_range-transportation-plan/)

## 2045 LRTP SCENARIO PLANNING

[https://www.hrtpo.org/page/2045-long\\_range-transportation-plan:-scenario-planning/](https://www.hrtpo.org/page/2045-long_range-transportation-plan:-scenario-planning/)

## HRTPO PROJECT PRIORITIZATION

<https://www.hrtpo.org/page/project-prioritization/>

Dale M. Stith, HRTPO Principal Transportation Planner  
dstith@hrtpo.org

