



Inclusion of Federal Installations / Facilities During Coastal Storm Risk Management Feasibility Studies

PROBLEMS

- USACE lacks the fiscal flexibility to incorporate military installations and other Federal facilities into the implementation of its Civil Works projects.
- Most notable in the inability to account for such installations and facilities in the formulation and construction of coastal storm risk management features.
- Both the federal facilities and the adjacent communities are left at greater risk of storm surge and the long-term effects of sea level rise and climate change.

OPPORTUNITIES

- USACE has the authority and capability to synchronize climate resilience efforts by incorporating military installations and other Federal facilities into the formulation of its CSRM projects.
- Interest by Congressional representatives to better synchronize Civil Works and military climate resilience efforts by leveraging USACE capabilities.
- Although military and other Federal presence in the Hampton Roads area is robust, there are numerous metropolitan areas with a moderate to heavy Federal presence along the U.S. coastlines.

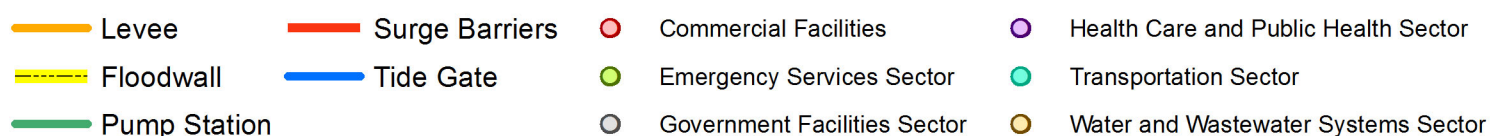
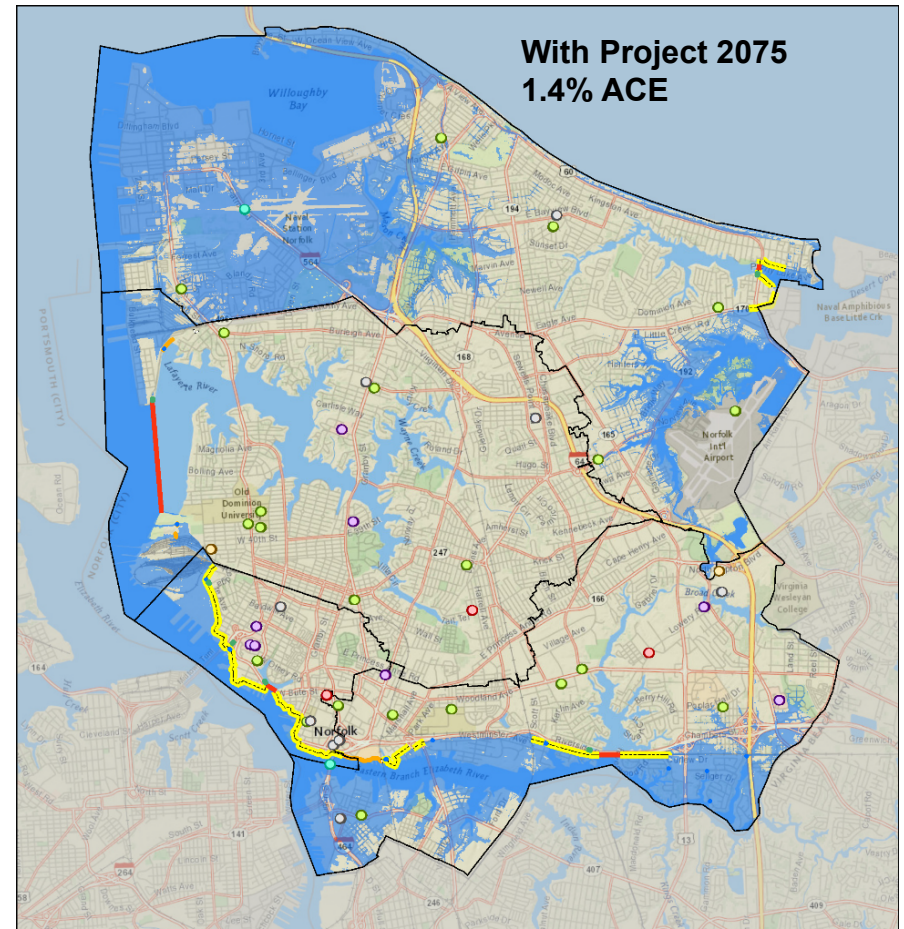
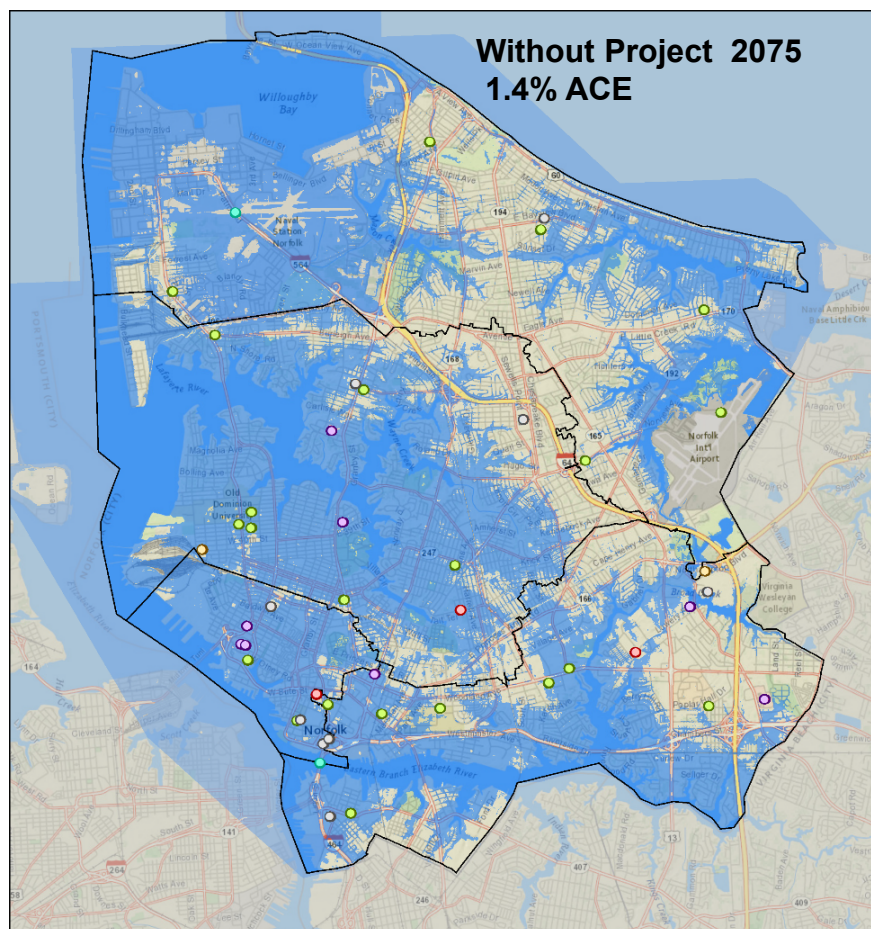
OBJECTIVES

- Legislative changes that would allow the use of Civil Works funds to study and construct coastal protection features at Federal installations and facilities.
- Partnering with Federal or military entities within the Civil Works framework to ensure the development of comprehensive, community-wide, and geographically contiguous storm risk management

BENEFITS

- Preventing the likelihood of military construction funding not being available at the same time and on the same scheduled as a USACE CSRM feasibility study.
- Addressing the geography and coastal environment as a system versus segmented by Federal and non-Federal boundaries.
- Providing support to civilian areas that are integrated with or supported by Federal installations.

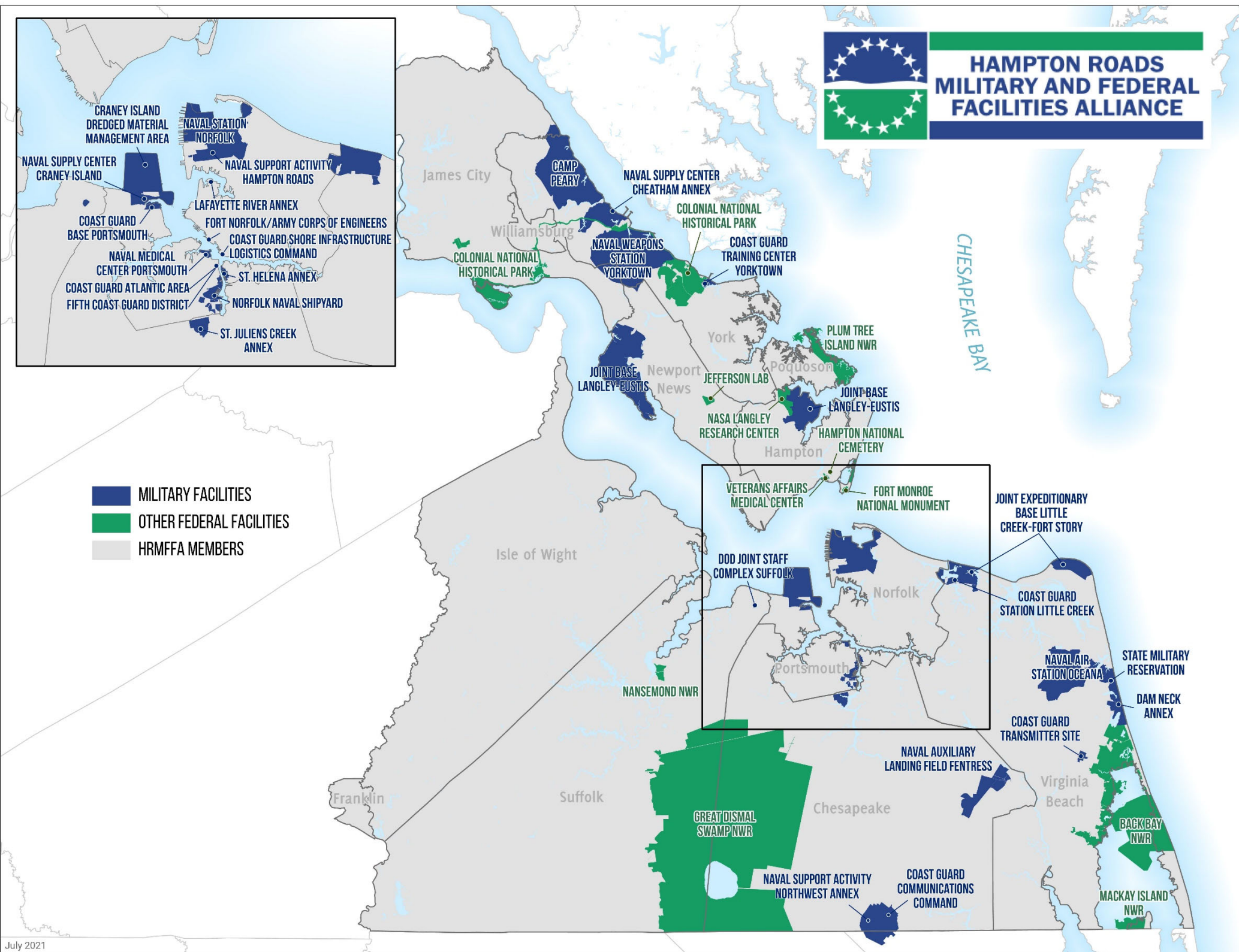
Ex. Norfolk CSRM study unable to incorporate features in Recommended Plan to include Norfolk Naval Station.



Note: Assumes USACE Intermediate RSLR increase of 1.45 ft. from 2016



Inclusion of Federal Installations / Facilities During Coastal Storm Risk Management Feasibility Studies



U.S. Army Corps of Engineers, Norfolk District