

Joint Land Use Study Implementation in Hampton Roads

HRPDC Coastal Resilience Subcommittee
August 22, 2022

Benjamin J. McFarlane, Senior Regional Planner
Hampton Roads Planning District Commission



South Hampton Roads JLUS Projects

Norfolk-Virginia Beach JLUS - August 2019

Joint Expeditionary Base Little Creek-Fort Story

Naval Air Station Oceana

Naval Station Norfolk

Naval Support Activity Hampton Roads

Portsmouth-Chesapeake JLUS - August 2021

Norfolk Naval Shipyard

Naval Station Norfolk - Craney Island Fuel Depot

Naval Support Activity Hampton Roads - Naval Medical Center Portsmouth

Key Issues



Access



**Community
Assets**



**Coordination &
Communication**



Development



Flooding



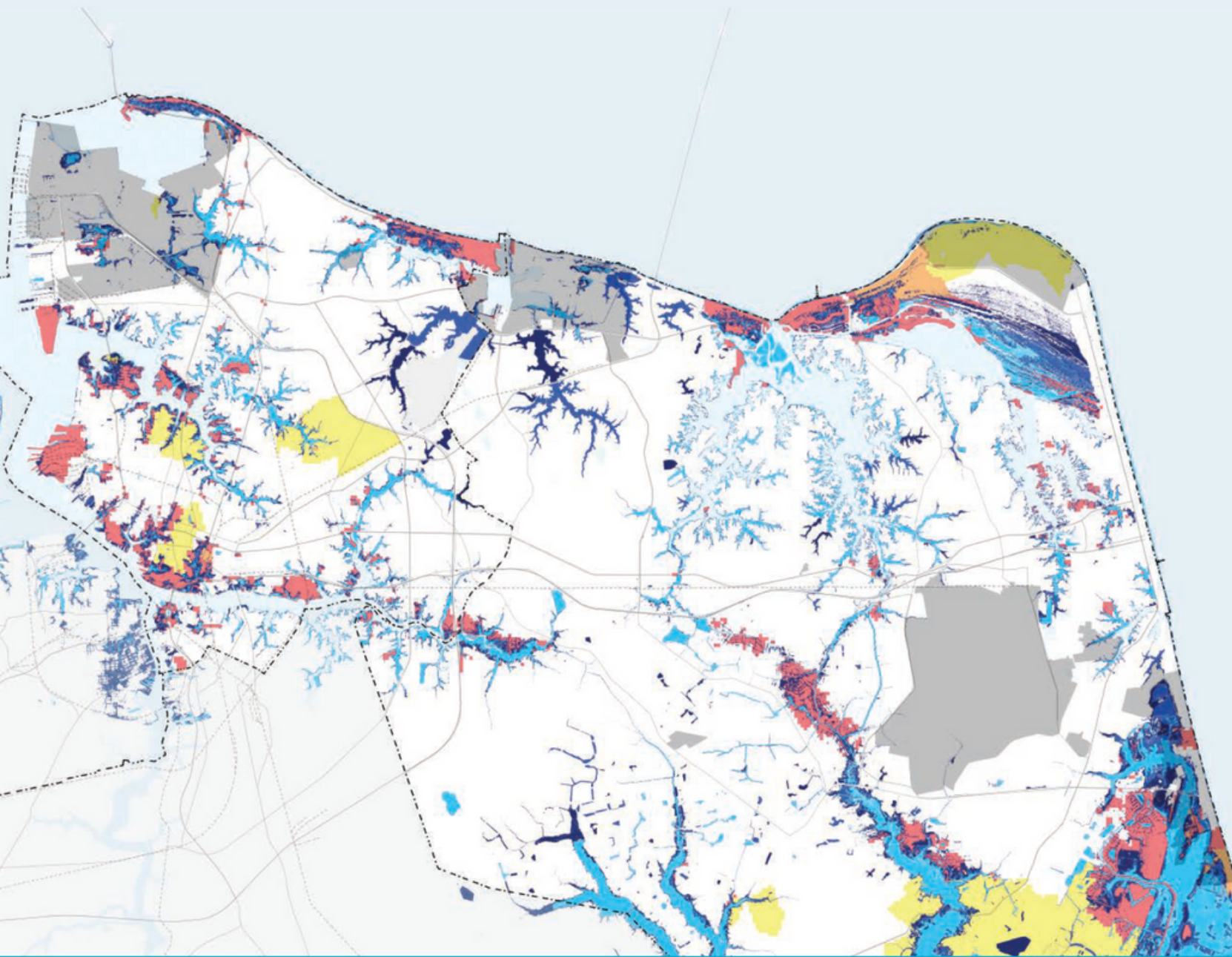
Mobility



Parking

**NORFOLK AND
VIRGINIA BEACH**

JOINT LAND
USE STUDY



Study Goals

Reliable and resilient access routes for DoD personnel

Adequate and well-maintained stormwater management systems

Reliable and resilient utility networks

Effective and institutionalized coordination, cooperation, and collaboration at multiple scales

A regional prioritization mechanism for resiliency initiatives



PORTSMOUTH & CHESAPEAKE

JOINT LAND USE STUDY

Hampton Roads Planning District Commission

Final Report
August 2021

Study Goals

Mitigate flooding impacts to the transportation network

Strengthen military installation resilience

Maintain and expand access to Navy installations

Enhance neighborhoods that surround Navy installations

Redevelop and reuse land to improve the local economy

Adopt policies and regulations to manage growth and prevent conflicts

Strengthen relationships between Navy installations and localities

From Studies to Results

Local staff implementation committees (Chesapeake, Norfolk, Portsmouth, and Virginia Beach) established with HRPDC support.

Implementation committees will support:

- Maintaining communication between localities and installations
- Implementation of study recommendations through grant applications and other efforts
- Sharing of information between localities

Implementation Committees

Chesapeake

Robert Geis, Deputy City Manager

Tim Howlett, Development Services Center

Brian Solis, Deputy City Manager

Lucy Stoll, Planning Department

Norfolk

Patrick Roberts, Deputy City Manager

Matt Simons, Resilience Office

Kyle Spencer, Acting Chief Resilience Officer

John White, Public Works Department

Portsmouth

Bob Baldwin, Deputy City Manager

Brian Donahue, Economic Development

Carl Jackson, Planning Department

Brian Swets, Planning Department

James Wright, Director of Engineering

Virginia Beach

Kaitlen Alcock, Planning Department

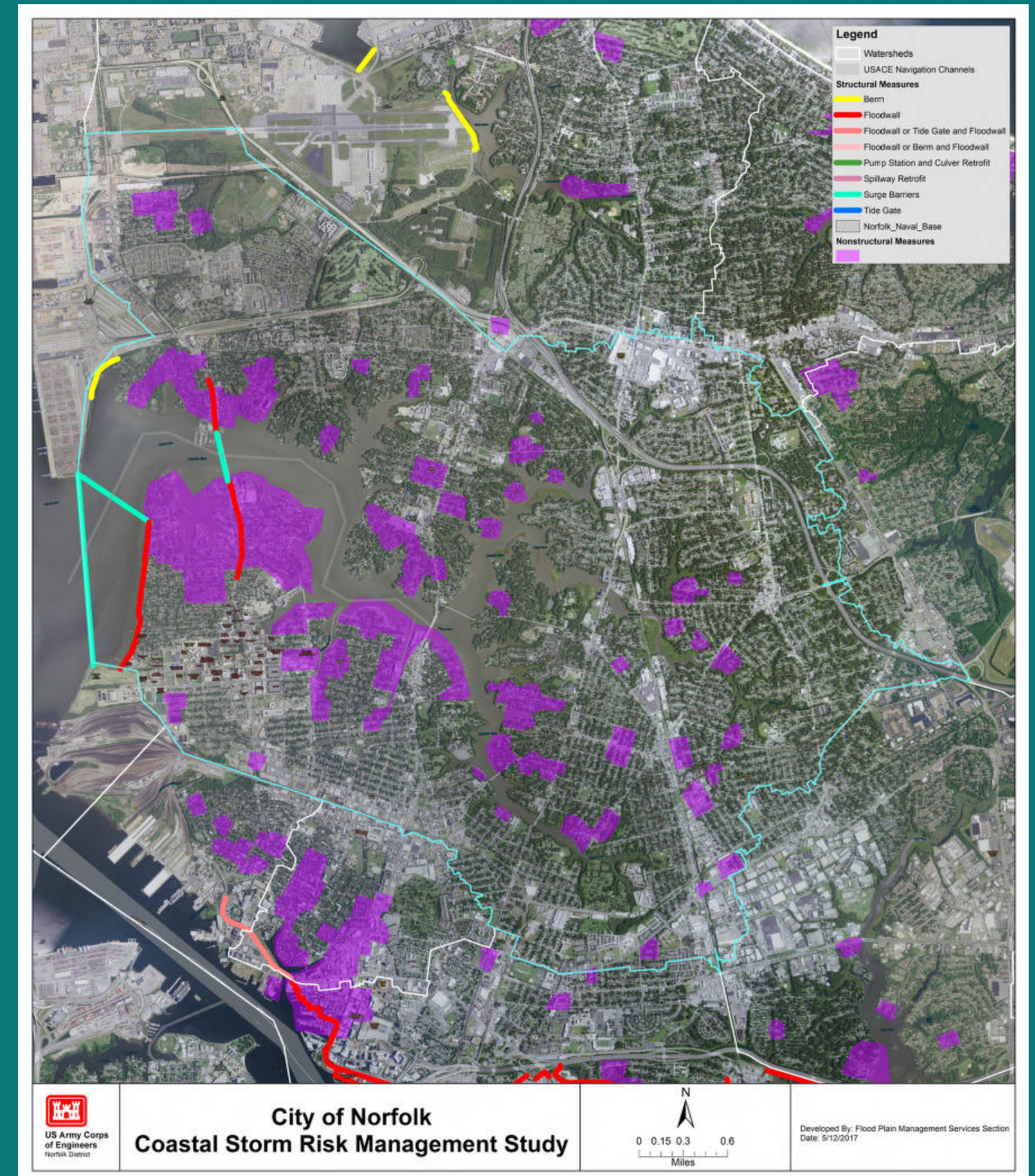
LJ Hansen, Public Works Director

Bobby Tajan, Planning Director

Kathy Warren, Strategic Growth Area Manager

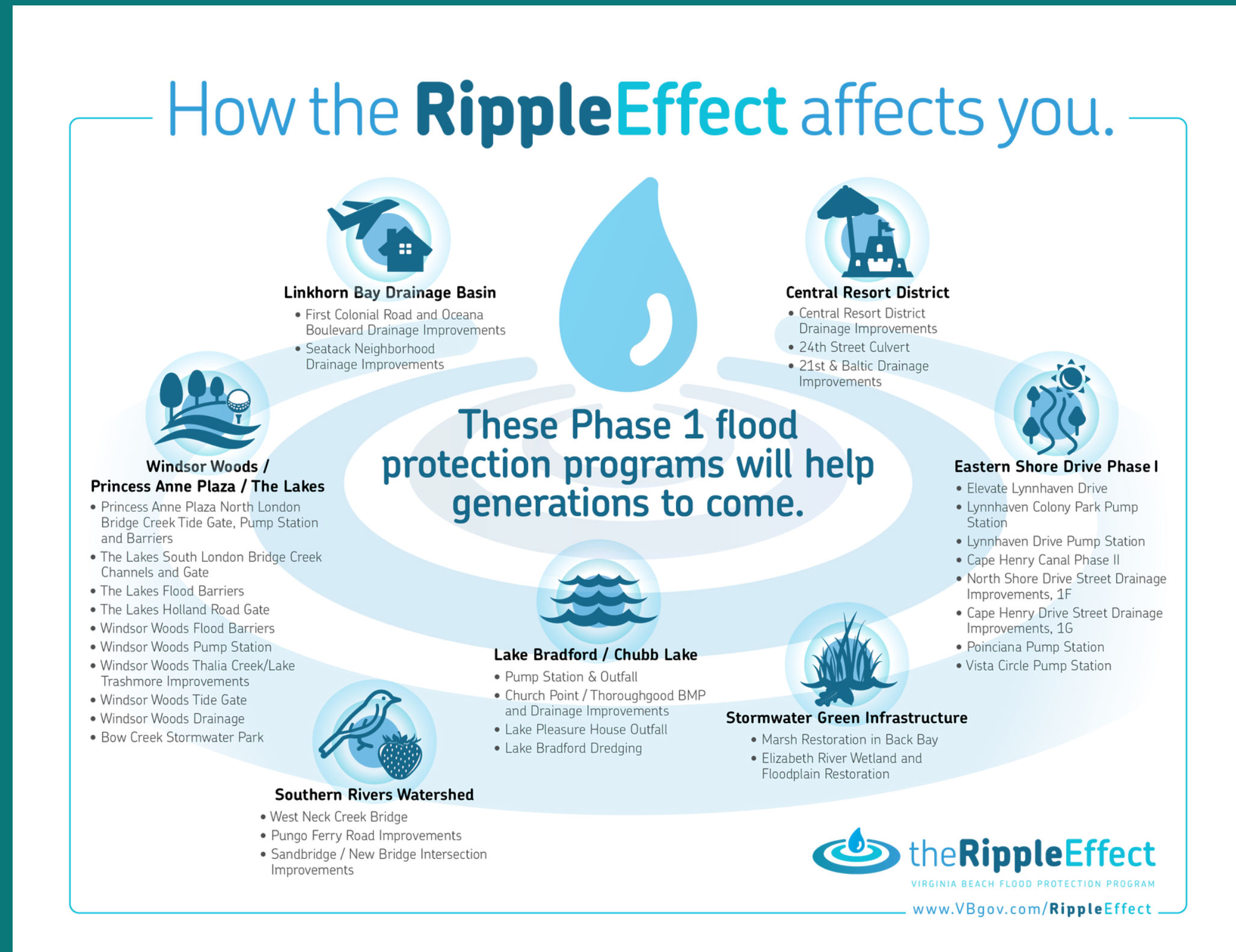
JLUS Implementation Highlights - Norfolk

- **Completed Coastal Storm Risk Management Study with USACE and \$400 million in federal funding for implementation**
- **\$500,000 from Virginia Community Flood Preparedness Fund for Lake Whitehurst H&H Study**



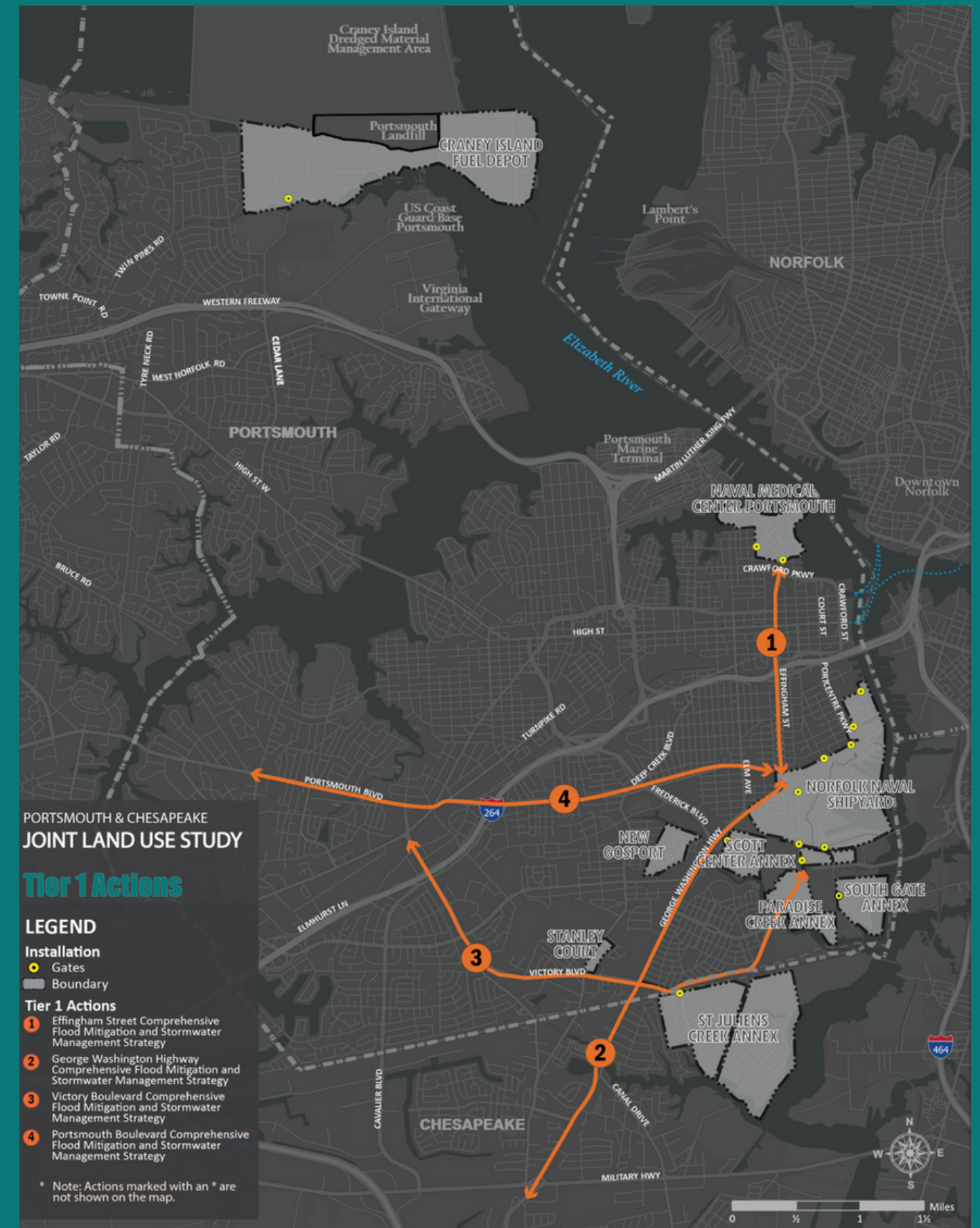
JLUS Implementation Highlights - Virginia Beach

- \$567 million bond referendum for city flood protection program
- Implementation of Nimmo Parkway Phase VII-A and VII-B
- USACE Coastal Storm Risk Management Study Authorization



JLUS Implementation Highlights - Portsmouth

- \$500,000 from Virginia Community Flood Preparedness Fund for Resilience Strategy
- Expansion of HRT services to shipyard
- Developing grant proposals for highway corridor flooding and stormwater strategies
- \$10 million from SmartScale for commuter parking lots on Greenwood and Downtown



JLUS Implementation Highlights - Chesapeake

- **City Industrial Waterfronts Study**
- **Caledon economic development project at Deepwater Terminal**
- **\$75,000 from Community Flood Preparedness Fund for city resilience plan**



JLUS Implementation - Regional

- **HRSD Climate Resilience Study**
- **Partnership with Volpe Center on integrating resilience into transportation modeling and planning**
- **Roadway Flooding Sensors Project funded by Implementation Grant from Office of Local Defense Community Cooperation**
- **Regional Resilient Stormwater Management Design Guidelines**

JLUS Implementation - Next Steps

- **Military Installation Resilience Review**
 - Underway - anticipated completed by June 2023
- **Roadway Flooding Sensors Project**
 - Pilot underway - anticipated completed by October 2022
- **Local Implementation Projects - TBD**

Questions

Whitney Katchmark
Principal Water Resources Engineer
wkatchmark@hrpdcva.gov

Ben McFarlane
Senior Regional Planner
bmcfarlane@hrpdcva.gov