



# HAMPTON - JBLE-LANGLEY JOINT LAND USE STUDY'S

Bruce Sturk



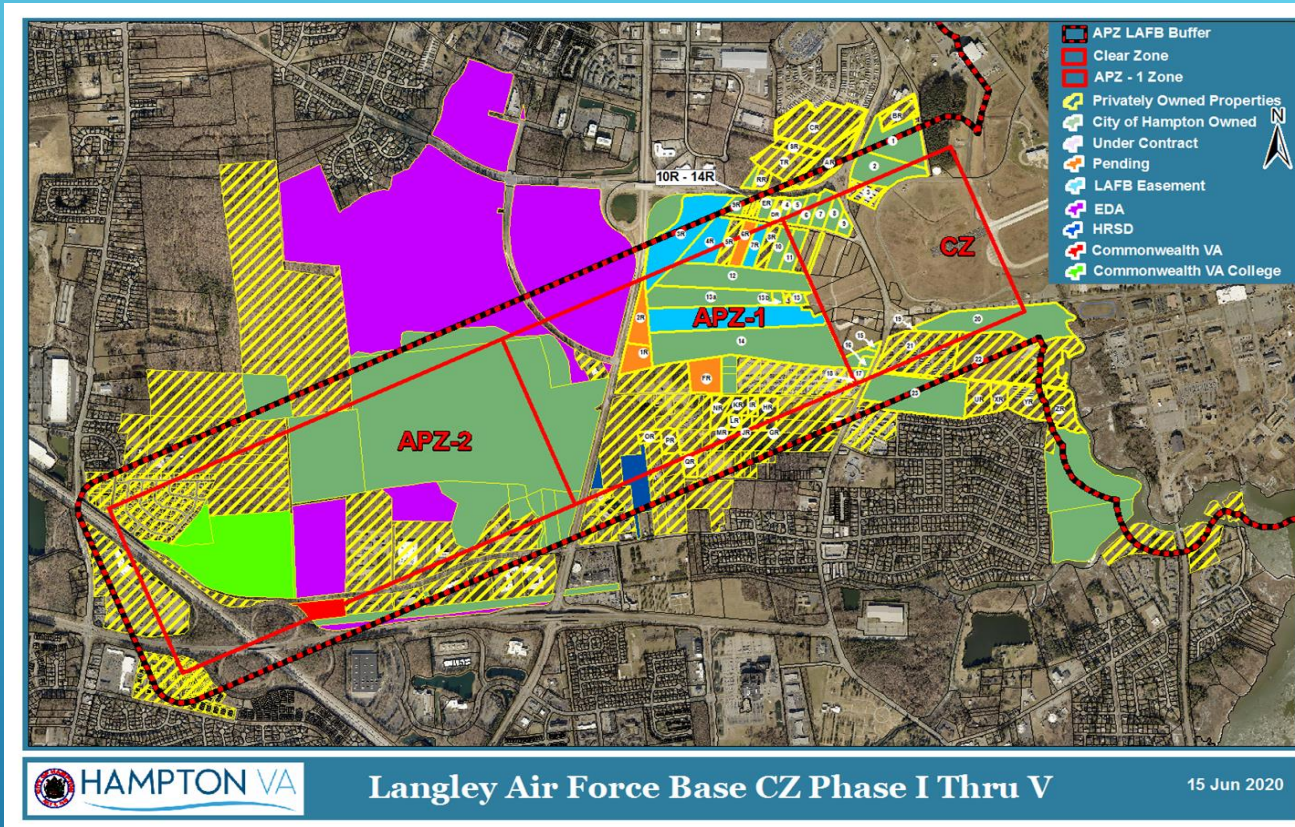


- 2010 Joint Land Use Study (JLUS)
- 2018 JLUS
- Take Aways





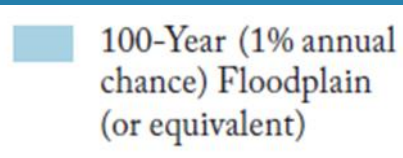
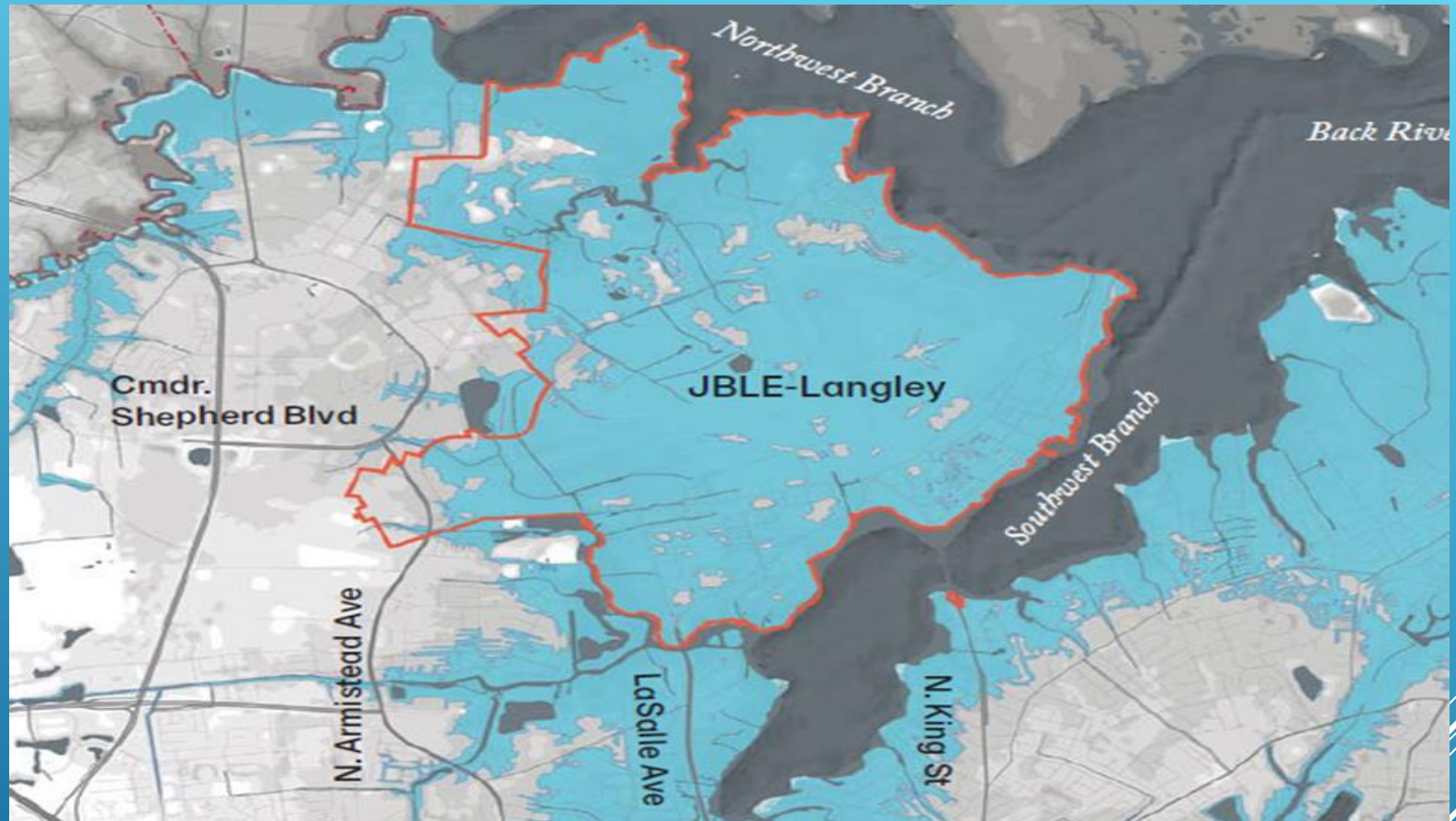
# 2010 JOINT LAND USE STUDY



- ▶ Maintaining mission capability of LAFB and safety of citizens by protecting from urban encroachment
  - ▶ Phase I Non Compatible Land Use Purchase Plan (City & State) ~\$12M
  - ▶ Phase II Non Compatible Land Purchase Plan w/ LAFB & \*REPI\* ~\$1.5M
- DoD \*Readiness Environmental Protection Integration program\*

**\$13.5M Investment**

# 2018 AMENDED JLUS



Focusing on Resilience and Adaption



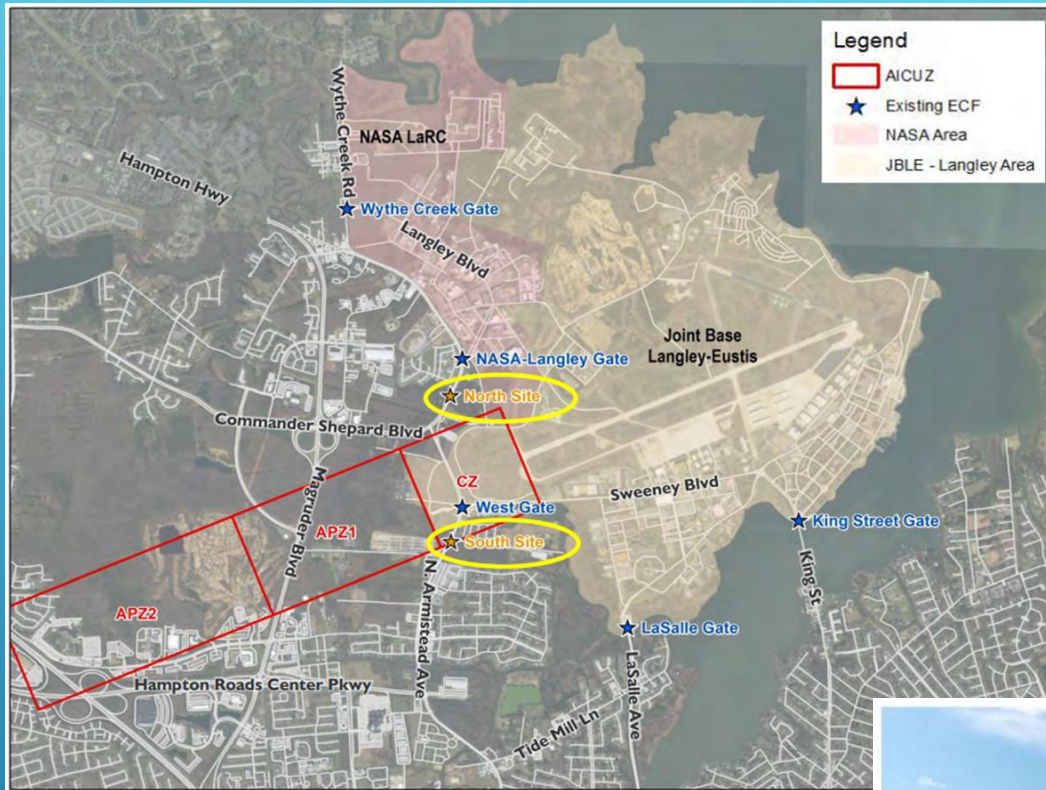
# Resiliency & Adaptation Underway

## Joint Land Use Study (JLUS)/Compatibility Use Plan (CUP) & Military Installation Resiliency (MIR)

- ▶ Amended 2010 JLUS in 2018 with focus on Resiliency - Sea Level Rise
  - ▶ (\*OEA-CUP grant \$75,000 – City match \$7,500 = \$82,500 )
- ▶ Completed Langley AFB West gate relocation study
  - ▶ (\*OEA-MIR grant \$343,800 – City match \$38,200 = \$420,200 )
- ▶ Conducting Environmental Due Diligence Study (wetlands) & Stormwater Management study; LAFB gate relocation next phase
  - ▶ (\*OEA-MIR grant \$156,033 – City match \$17,337 = \$173,370 )
- ▶ Completed LaSalle Ave. Flood Mitigation Resiliency study
  - ▶ (\*OEA-MIR grant \$366,544 – City match \$40,730 = \$407,274 )
- ▶ Preparing scope of work for Big Bethel Reservoir study (CUP-OEA grant)
- ▶ **Total resiliency related grant & City matched funding \$1+M**

*\*Office of Local Defense Community Cooperation\**





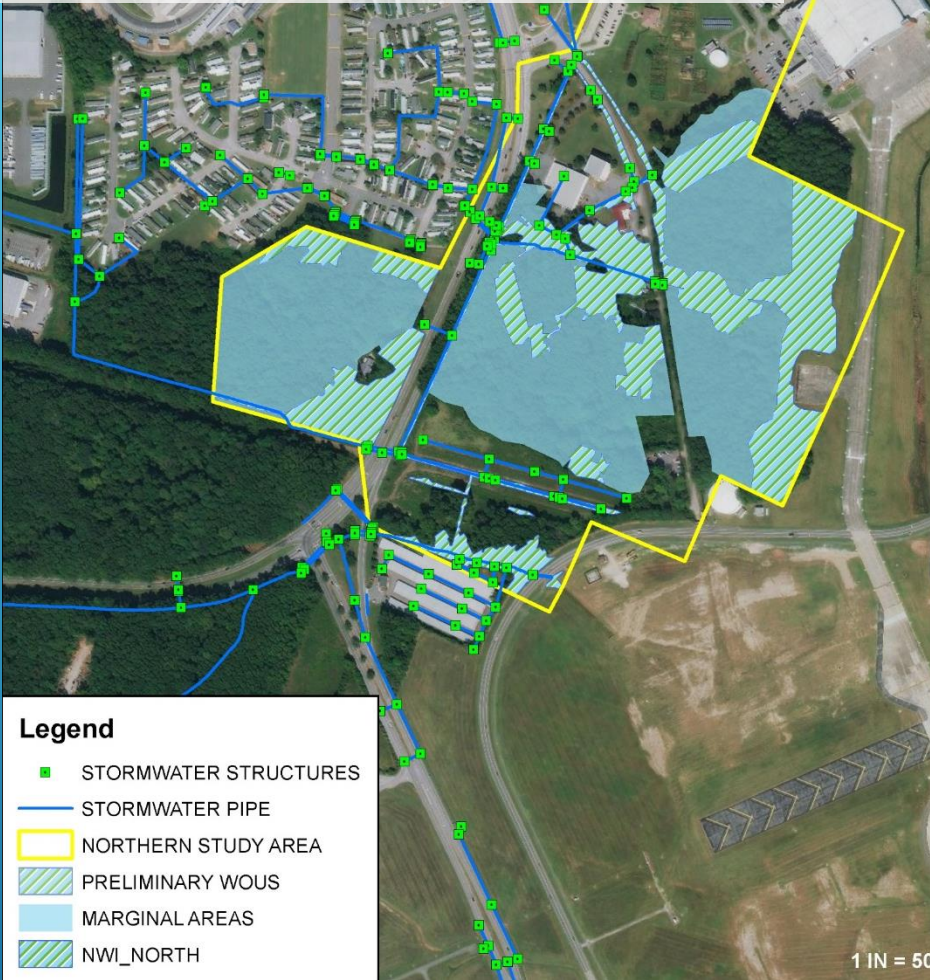
## 2018 Amended JLUS Recommendation

**JBLE-Langley  
West Gate Relocation –  
North site preferred location**

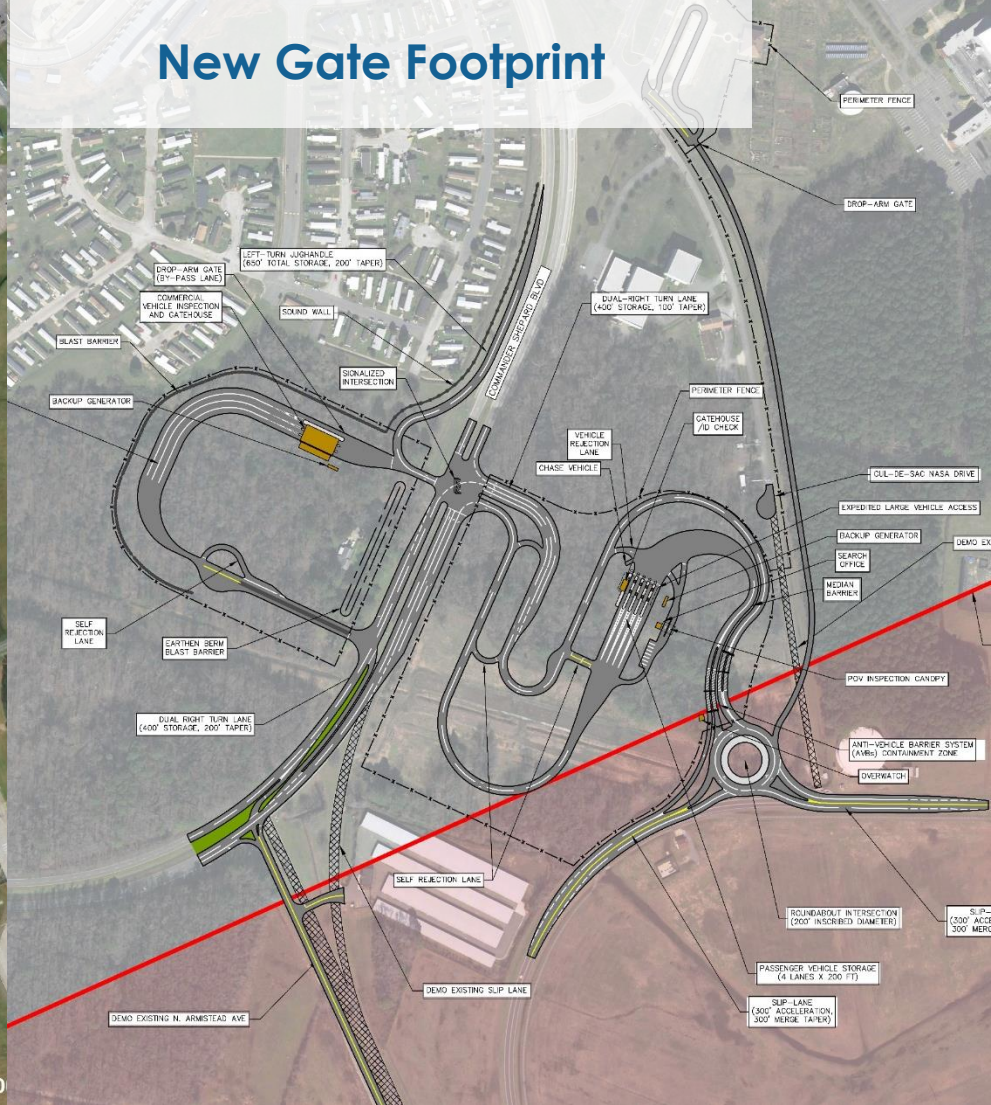




# Stormwater and Environmental Due Diligence Study Area



## New Gate Footprint



## WEST GATE RELOCATION STORMWATER AND ENVIRONMENTAL DUE DILIGENCE





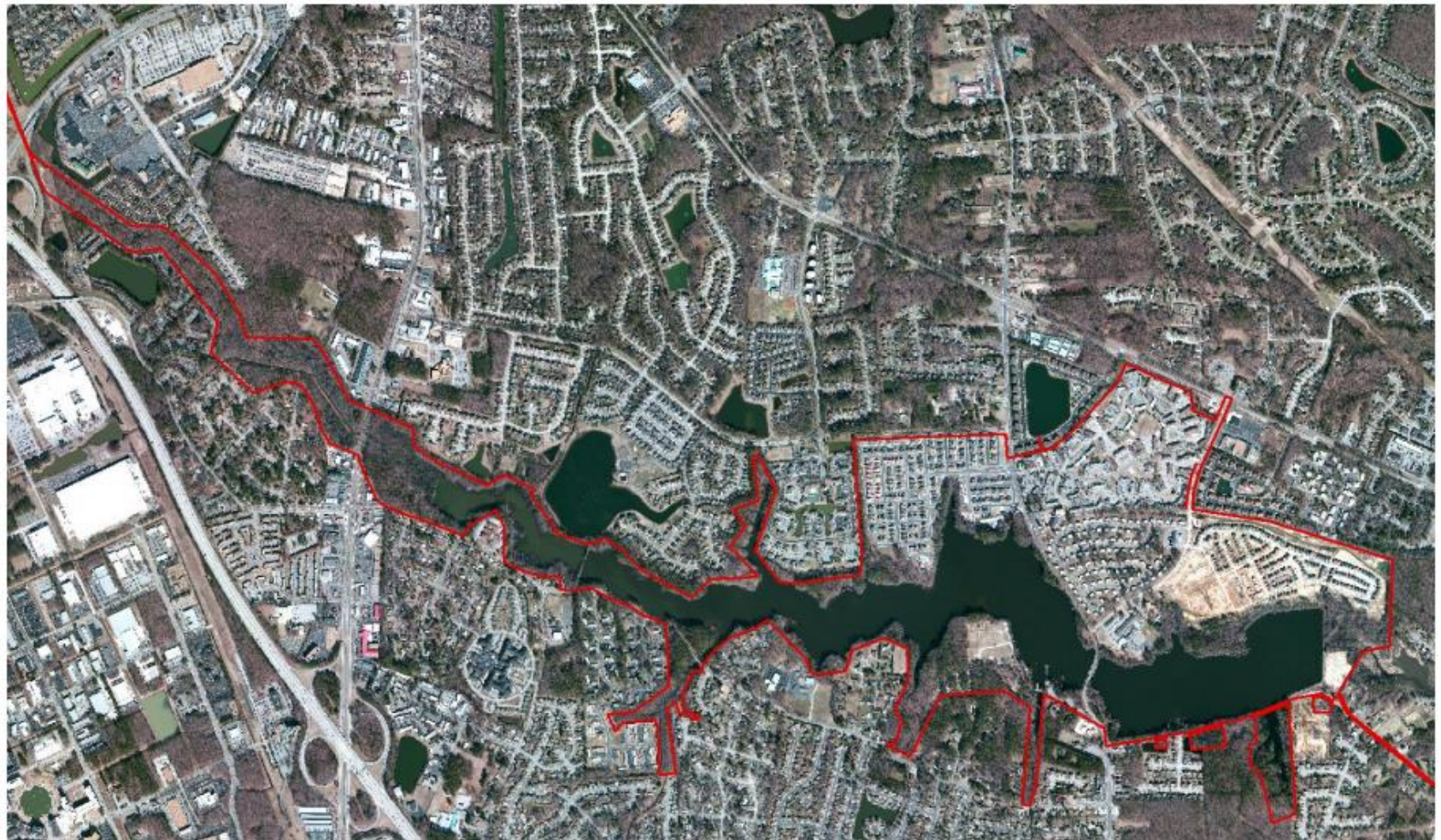


# 2018 Amended JLUS Recommendation

## LASALLE AVENUE CORRIDOR RESILIENCY PLAN







**BIG BETHEL RESERVOIR – DETERMINE HIGHEST & BEST USES  
WITH EMPHASIS ON RESILIENCY**



# Take Aways for Success

- Commitment & Support from City Council
  - Resources & Staff Participation
- Advocacy & Partnership from JBLE-Langley
  - Future Plans & Requirements
- Collaboration & Cooperation with OLDCC
  - Grant Funding & Technical Advice
- Engagement & Advice from Stakeholders
  - Subject Matter Experts







# QUESTIONS

