

REGIONAL CONNECTORS STUDY

COMMUNITY ADVISORY COMMITTEE BRIEFING
APRIL 2023

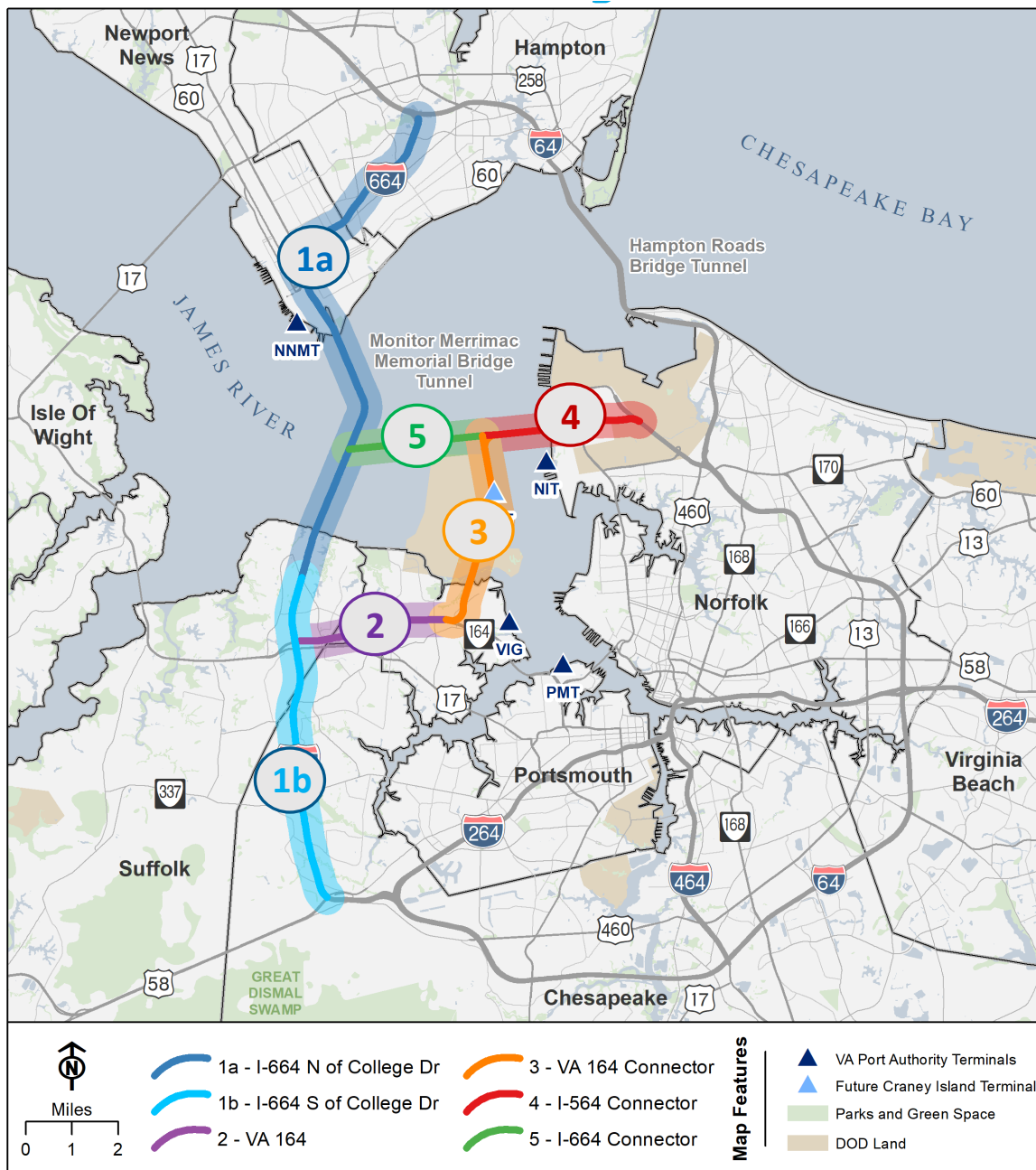
About the Study



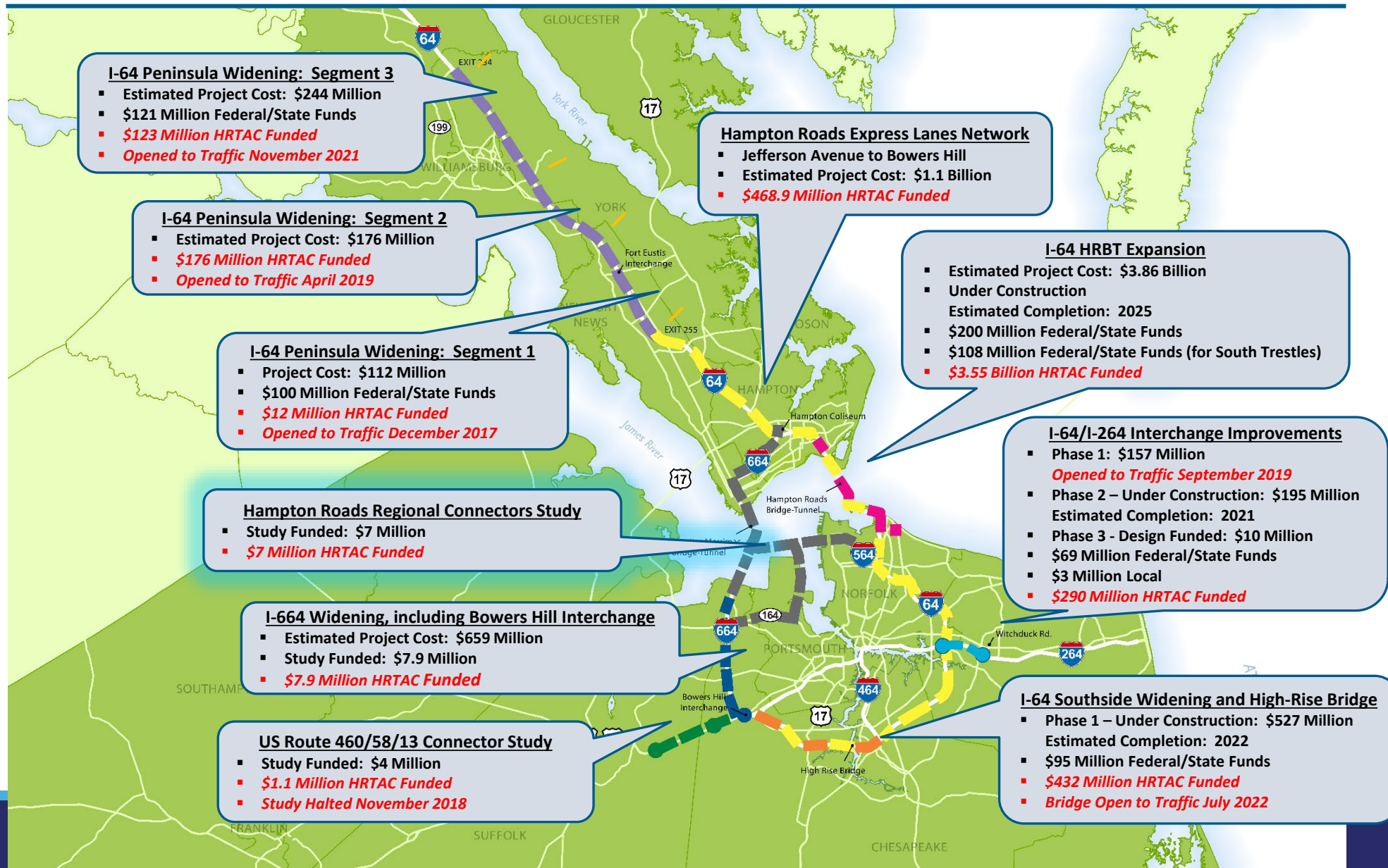
Michael Baker

INTERNATIONAL

Funded by:



Hampton Roads Regional Transportation Priority Projects



Updated:
August 2022

Study Segments

Segment 1a (I-664 Widening north of College Drive)

Add four new southbound travel lanes through a new tunnel west of the existing tunnel and change the existing tunnel to four northbound lanes. Approximately 5 miles of roadway widened two-lanes in each direction for express lanes (high-occupancy/toll lanes).

Segment 2 (VA-164 Widening)

Widen VA-164 to six lanes, three lanes in each direction. Use existing right-of-way to the extent possible for widening VA-164.

Segment 3 (VA-164 Connector)

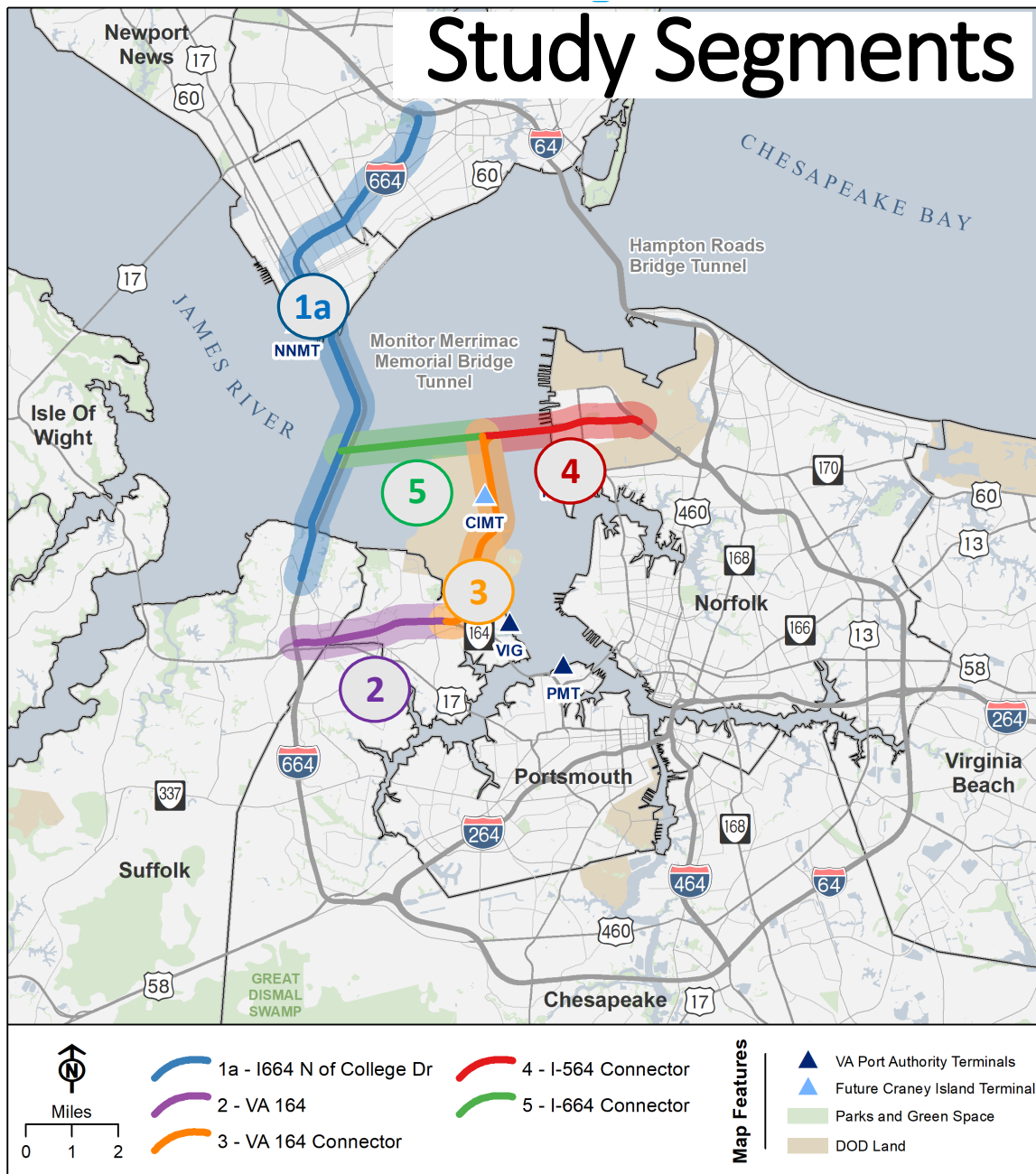
Construct a new four-lane highway, two lanes in each direction, from a new interchange at VA-164 west of Cedar Lane across Portsmouth Landfill and Craney Island. The new highway will connect to a new interchange with I-564 Connector and/or I-664 Connector over the water.

Segment 4 (I-564 Connector)

Construct a new four-lane highway, two lanes in each direction, from I-564 using a tunnel and bridge to a new mid-harbor island connection at the VA-164 Connector and/or I-664 Connector.

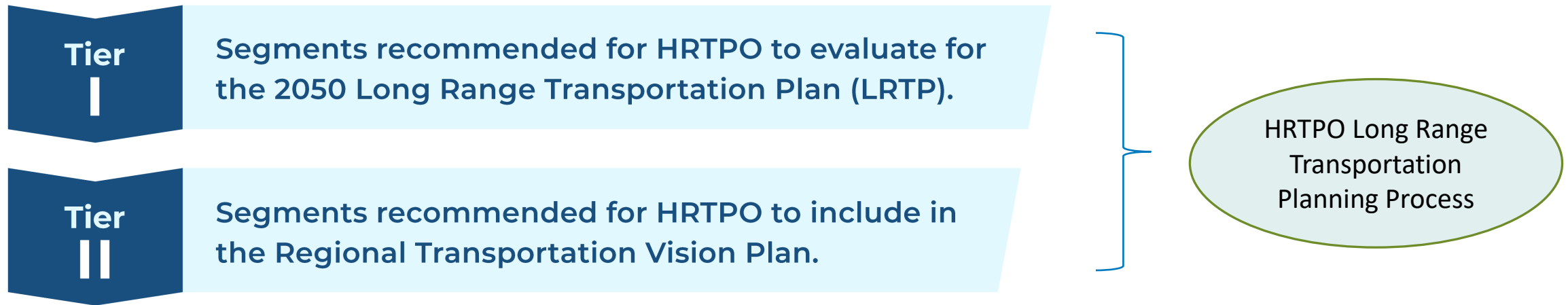
Segment 5 (I-664 Connector)

Construct a new four-lane highway, two lanes in each direction, from I-664 to a new mid-harbor island connection to I-564 Connector and/or VA-164 Connector.



What is Segment Tiering?

- The RCS will propose roadway segments that are ready to move forward and appear the most cost effective as Tier I recommendations.
- Segments that require further refinement and have hurdles to advancing are Tier II recommendations.



Tiering Recommendations - Approach

Qualitative Evaluation

+

Quantitative Evaluation

Readiness

Permitting
Issues

Congestion
Benefits

Economic
Benefits

Segment
Costs

Tiering Recommendation

Segment	1a - I-664 Widening	2 – VA 164 Widening
Quantitative findings – benefits relative to cost	High	High
Qualitative findings – Relative Segment Readiness	High	Medium
Qualitative findings – Relative Segment Ease of Permitting	Medium	High

Recommend
Tier I

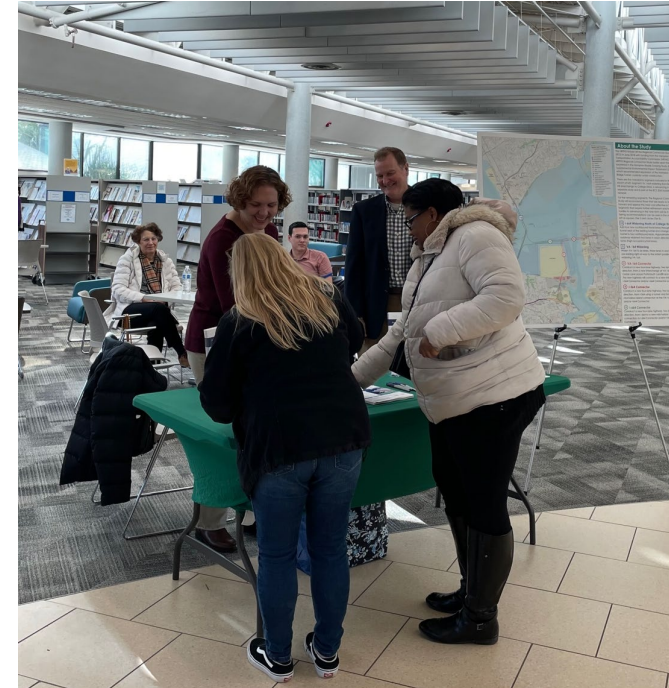
Tiering Recommendation

Segment	3 – VA 164 Connector	4 - I-564 Connector	5 – I-664 Connector
Quantitative findings – benefits relative to cost	Low	Low	Low
Qualitative findings – Relative Segment Readiness	Low	Low	Low
Qualitative findings – Relative Segment Ease of Permitting	Low	Low	Low

Recommend
Tier II

February Open Houses

Date	Location	City	Participants
February 1	Pearl Bailey Library	Newport News	15
February 2	Lambert's Point Community Center	Norfolk	18
February 7	Churchland Branch Library Received request to attend the April Churchland Civic League meeting	Portsmouth	15
February 9	VDOT Hampton Roads District Office Received request to attend the April Pughsville Civic League meeting	Suffolk	20



- ☐ Preceded with three pop-up information tables at public libraries in January
- ☐ Followed with Online Open House February 13 – March 6

What We Heard (Combined for Segments)

Benefits

- Builds on prior studies
- Addresses congestion and/or bottlenecks
- Improved commute times
- Improved pedestrian/bicyclist safety
- Reduced truck traffic and emissions
- Economic benefits to businesses

Burdens

- Cost and tax increases
- Increased development
- Environmental impacts and runoff
- Community impacts
- Construction impacts
- More congestion on existing routes
- Tolls

Balancing Ideas

- Add transit/rail modes
- Keep speeds low
- Compensate property owners fairly
- Reduce/remove tolls
- Extend Segment 2 to Rt 17
- Address environmental impacts
- Accelerate construction
- Combine segments
- Impose costs on private sector

Next Steps

The final steps in the Regional Connectors Study include:

- Holding a **Regional Symposium** to discuss the findings of the first round of public engagement with community leaders and to address environmental justice
- Analyzing **traffic operations** of the Tier 1 segments to add insight on congestion results and identify any refinements for project cost and design
- Testing the Tier 1 and Tier 2 segments in regional “**Greater Growth**” **scenarios** with varied growth assumptions regarding land use, technology, and the economy – this analysis will provide additional insights on congestion and economic benefits
- Documenting the **full findings** of the study including a final round of public engagement in summer 2023

Regional Symposium

- May 22 or 25, 9 a.m. to Noon
- Round-table discussions to address project benefits, burdens, and balancing for all 5 segments
- Invite community representatives who are focused on environmental justice impacts to the communities and populations that they represent

How to stay involved

More information: www.connectorstudy.org

Contact us at **757-776-0362** or e-mail
connectorstudy@prrbiz.com

Find us on Facebook at
facebook.com/HRTPORegionalConnectorsStudy



Questions
