

# Hampton Roads Region Norfolk and Virginia Beach Joint Land Use Study

Hampton Roads Planning District Commission  
July 18, 2019

---

Benjamin J. McFarlane, AICP, CFM  
Senior Regional Planner

# Members of Congress tour areas where sea level rise is causing flooding in Hampton Roads

POSTED 9:09 PM, JULY 8, 2019, BY [NANA-SÉNTUO BONSU](#), UPDATED AT 10:22PM, JULY 8, 2019

WTKR – July 8, 2019

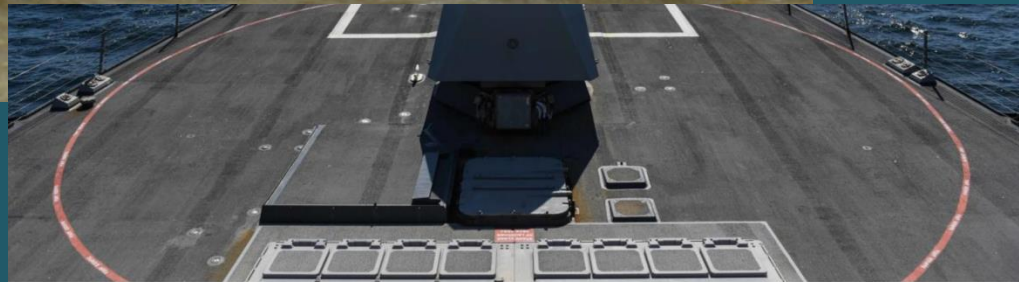


## Rising Seas Are Flooding Norfolk Naval Base, and There's No Plan to Fix It

*The giant naval base in Virginia is under threat by rising seas and sinking land, but little is being done to hold back the tides.*

By Nicholas Kusnetz

Inside Climate News – October 25, 2017



f

t

in

rss

July 5, 2018 | Topic: Security | Blog Brand: The Buzz | Tags: Navy, U.S. Navy, Military, Technology, World, War, Atlantic Fleet

## The U.S. Navy's Biggest Base Is Sinking

Climate change endangers Norfolk.

by Robert Farley

The National Interest – July 5, 2018

# The Joint Land Use Study...

...brings together the Navy and localities to discuss impact of flooding on Navy operations and readiness

...is a unique opportunity to get official involvement from the Navy and endorsement of local measures that support their mission

...moves the conversation from headlines to analyzing the problem to developing solutions

...tees up the region for potential federal assistance for resiliency projects

# Questions

---

What flood scenarios do we want to focus on?

---

What geographic areas are the most important to look at?

---

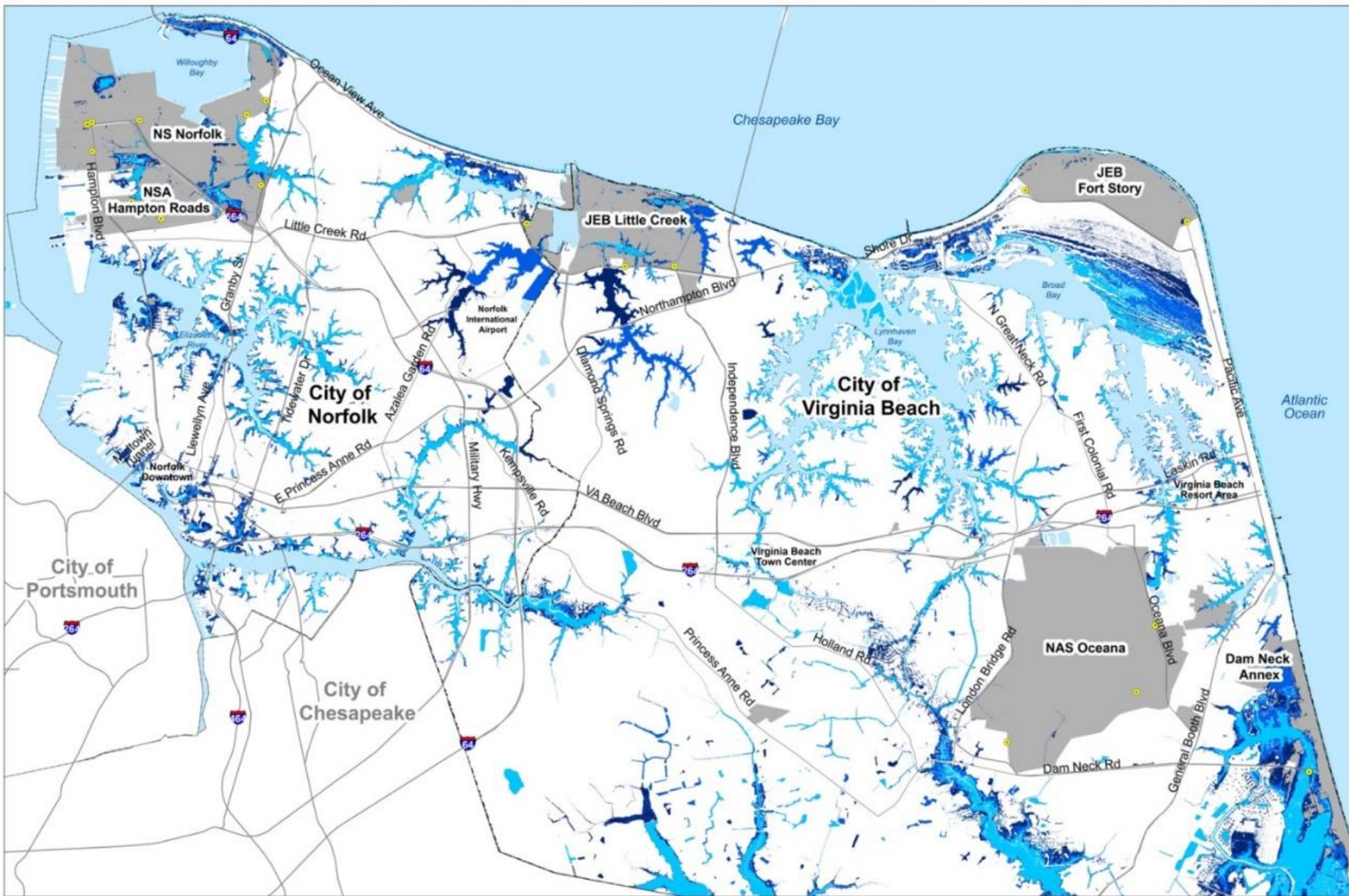
What is important to the Navy?

---

How can we prioritize recommended actions?

---

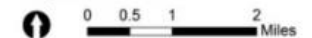




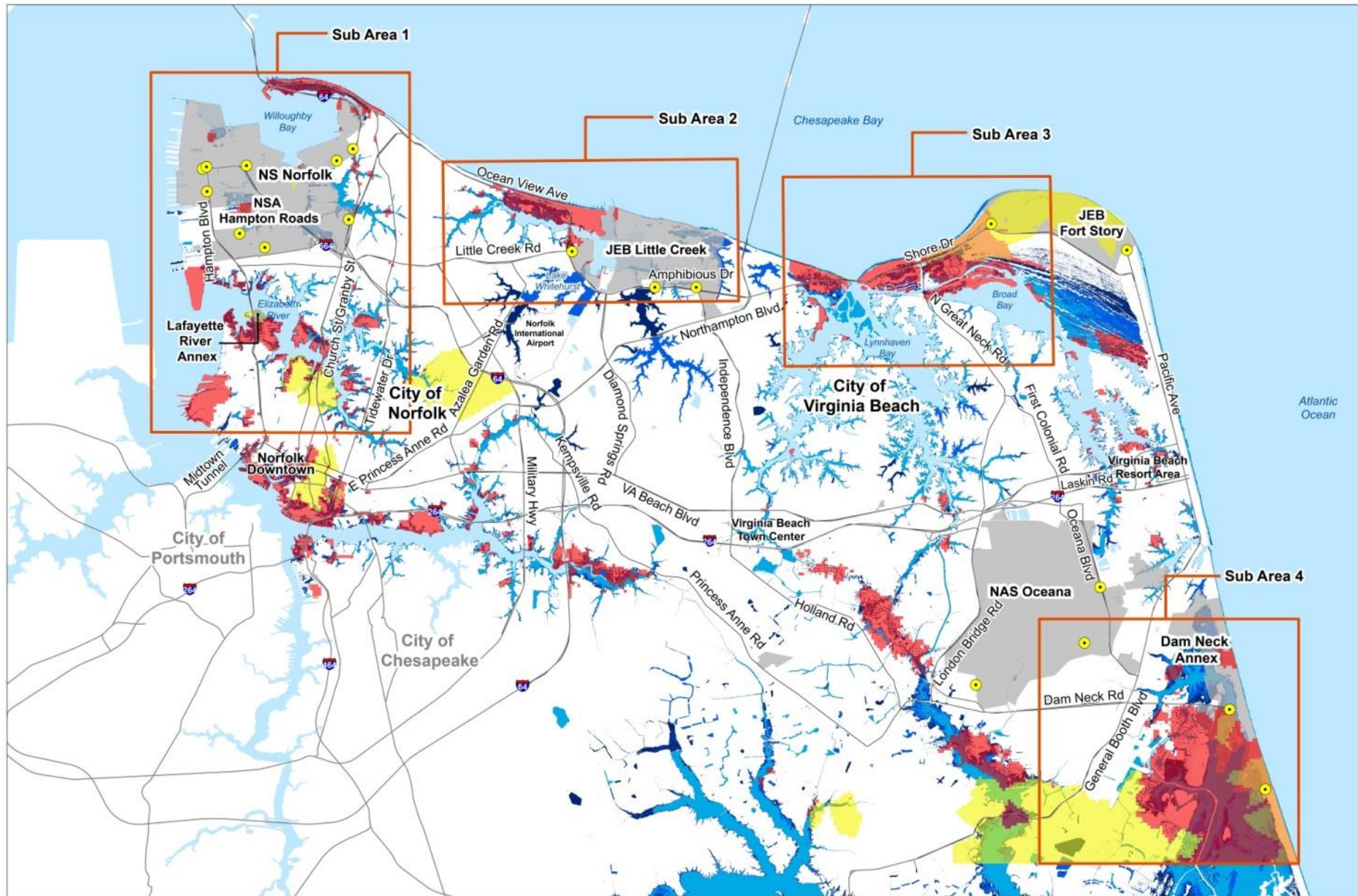
# Legend

- |                         |                      |                                |                              |
|-------------------------|----------------------|--------------------------------|------------------------------|
| Jurisdictional Boundary | Access Control Point | Minor Tidal Flooding, 0' SLR   | Minor Tidal Flooding, 3' SLR |
| Navy Installation       | Roadway              | Minor Tidal Flooding, 1.5' SLR |                              |

Sources: City of Norfolk; City of Virginia Beach; U.S. Navy; U.S. Department of Transportation; Hampton Roads TPO







### Legend

Jurisdictional Boundary  
 Navy Installation

● Access Control Point  
— Roadway

Blocked Access  
 Blocked or Indirect Access (2 or More Assets)

Blocked or Indirect Access (Less than 2 Assets)  
 Minor Tidal Flooding, 0' SLR  
 Minor Tidal Flooding, 1.5' SLR  
 Minor Tidal Flooding, 3' SLR

Sources: City of Norfolk; City of Virginia Beach; U.S. Navy; U.S. Department of Transportation; Hampton Roads TPO

0 0.5 1 2 Miles

# What Matters to the Navy

---

Reliable and resilient access routes for DoD personnel.

Adequate and well-maintained stormwater management systems.

Reliable and resilient utility networks.



Flooding Along Hampton Boulevard  
Bill Tiernan/Virginian-Pilot

# Prioritizing Recommendations

---

Installation  
Readiness

DoD  
Personnel  
Readiness

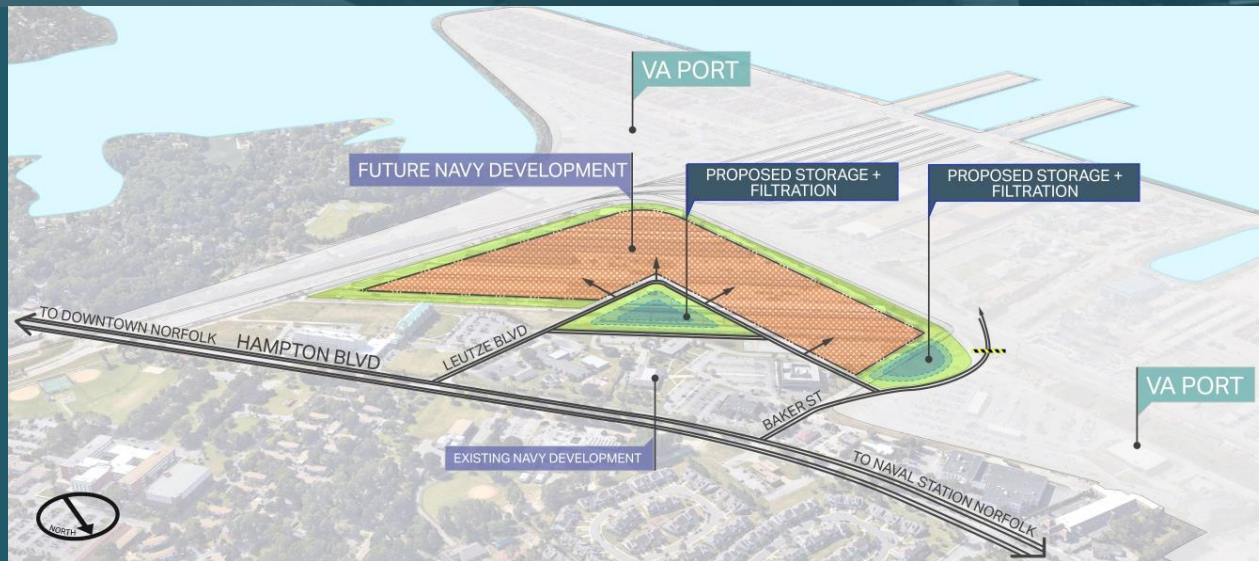
Community  
Co-Benefits

System  
Performance



Action #	Action	Score	Installations/ Sites Served
1	Hampton Blvd Comprehensive Flood Mitigation and Stormwater Management Strategy	19	Naval Station Norfolk, NSA Hampton Roads, Lafayette River Annex
2	Shore Drive Comprehensive Flood Mitigation and Stormwater Management Strategy	19	JEB Little Creek-Fort Story
3	JEB Little Creek Gate 1 – Amphibious Drive – Shore Drive Flooding Study	18	JEB Little Creek-Fort Story
4	East Amphibious Drive, Chubb Lake, and Lake Bradford Flood Mitigation and Stormwater Management Strategy	17	JEB Little Creek-Fort Story
5	Lafayette River Outer Surge Barrier (USACE)	16	NS Norfolk, NSA Hampton Roads, Lafayette River Annex
6	Dam Neck Gate Flood Impact Study	15	Dam Neck Annex
7	Oceana Blvd/Bells Road Drainage Study	15	Dam Neck Annex
8	Pretty Lake Storm Surge Barrier (USACE)	15	JEB Little Creek-Fort Story

# Hampton Boulevard Comprehensive Flood Mitigation & Stormwater Management Strategy



## MODEL PROJECT CONCEPT // NORTHERN PHASE

- Joint Norfolk-Navy-Port effort
- Integrated hydrology and hydraulics model
- Disconnect and re-route inlets on Baker St and Leutze Blvd
- Identify new storage and infiltration around Navy Depot
- Pursue MOU to formalize coordination

# Next Steps

---

- **Public Meetings**
  - August 12-13 in Norfolk and Virginia Beach
- **City briefings**
- **Improve and formalize** regional military-local government coordination to complement HRMFFA
- **Advocacy for federal and state funding** – Defense Access Roads, Defense Community Infrastructure Program, etc.