

SEE DS\_02, SHEET 2 OF 2 FOR NOTES.

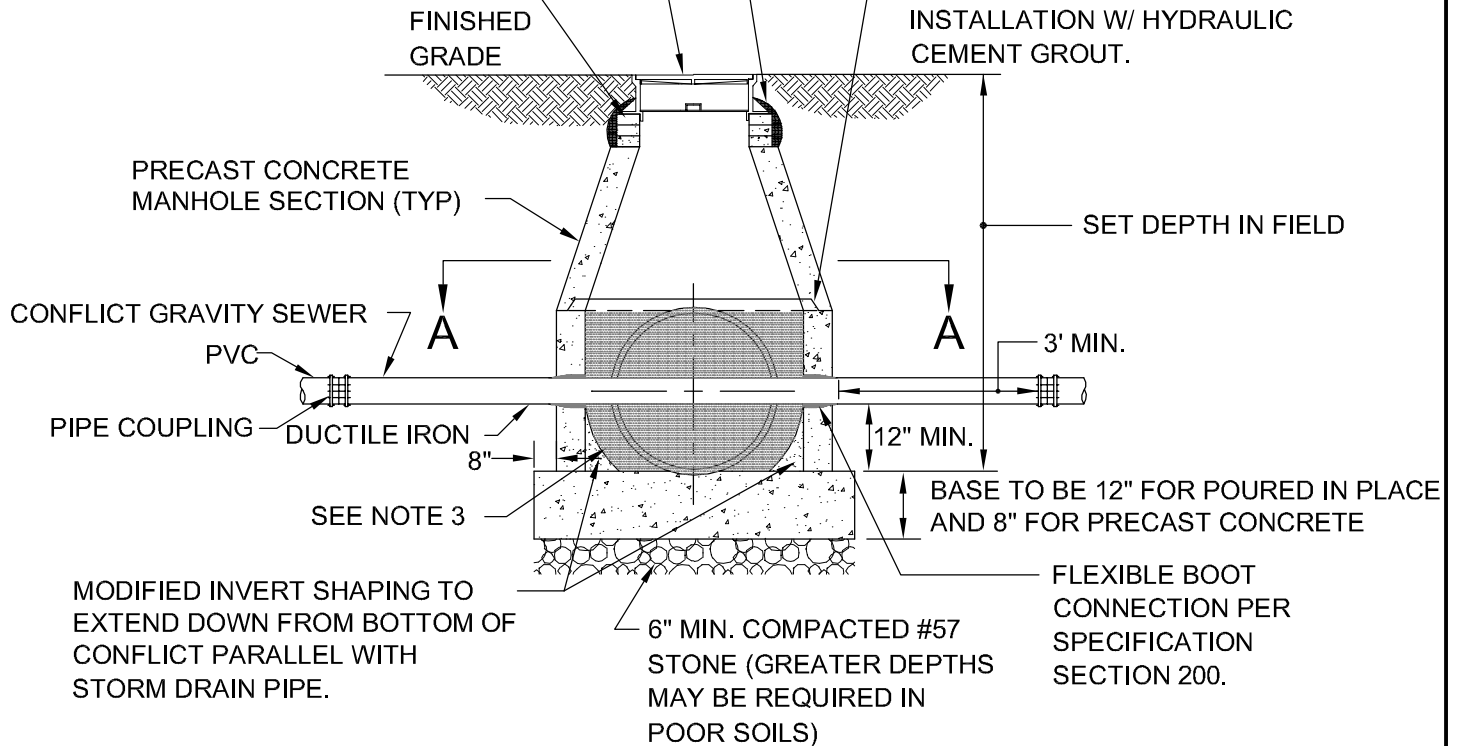
### SECTION A-A

PRECAST CONCRETE  
ADJUSTMENT RING (TYP)  
RINGS TO BE COVERED AND SEALED  
SMOOTH ON ALL INSIDE SURFACES,  
3/8" THICK (MIN.) WITH HYDRAULIC  
CEMENT HIGH STRENGTH GROUT

SEE SANITARY SEWER MANHOLE  
CASTING AND COVER (24") DETAILS

MANHOLE CASTING AND ADJUSTMENT RINGS  
TO BE SET & EMBEDDED IN BUTYL JOINT  
MATERIAL AND CAPPED WITH HYDRAULIC  
CEMENT GROUT OVER FRAME FLANGE,  
ADJUSTMENT RINGS AND SECTION.

JOINT SEAL TO BE IN ACCORDANCE  
WITH SPECIFICATIONS SECTION 200.  
GROUT INSIDE AND OUT AFTER  
INSTALLATION W/ HYDRAULIC  
CEMENT GROUT.



## PRECAST CONCRETE CONFLICT MANHOLE

NOT TO SCALE

REFERENCE  
200,302

CATEGORY  
DRAINAGE STRUCTURES

DATE  
12/10

SHEET No.  
1 OF 2

DETAIL No.  
DS\_02