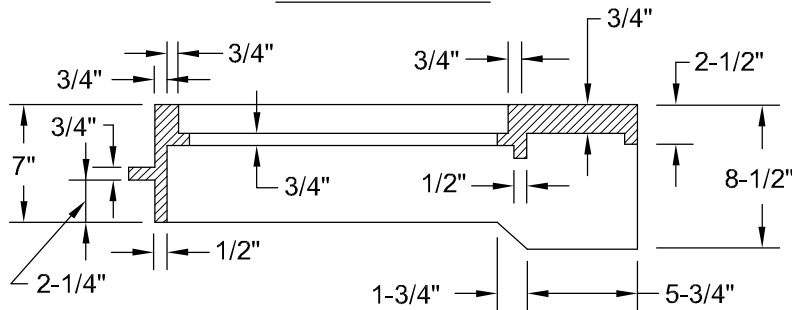
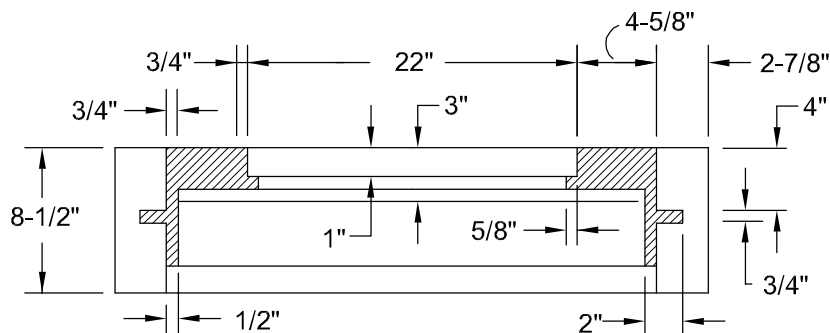


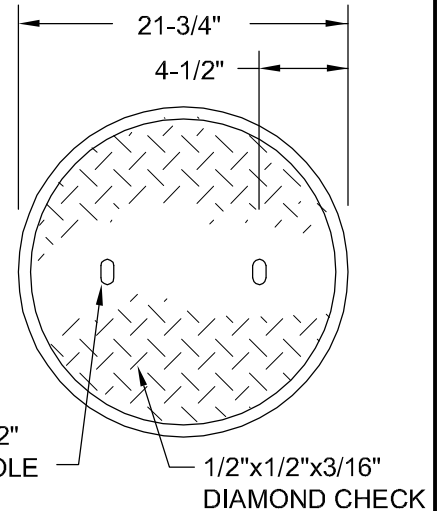
PLAN: FRAME



SECTION A-A



SECTION B-B



PLAN: COVER

NOTES:

1. FRAME & COVER TO BE SUPPLIED BY CAPITAL FOUNDRY OF VIRGINIA, INC., OR APPROVED EQUAL.
2. ALL GRAY IRON CASTINGS SHALL CONFORM TO LATEST EDITION OF ASTM A-48, CLASS 30 AND SHALL BE OF UNIFORM QUALITY.
3. ALL CASTING DIMENSIONS SHALL HAVE A TOLERANCE OF 1/8"±.
4. ALL CASTINGS SHALL BE CLEANED BY SHOT BLASTING AND HAND CHIPPING UTILIZING STANDARD INDUSTRY PRACTICES PRIOR TO SHOP APPLICATION OF ASPHALTIC COATING, BY DIPPING.

CURB INLET/CATCH BASIN FRAME AND COVER

NOT TO SCALE

REFERENCE
200,302

CATEGORY
DRAINAGE STRUCTURES

DATE
12/10

SHEET No.
1 OF 1

DETAIL No.
DS_03