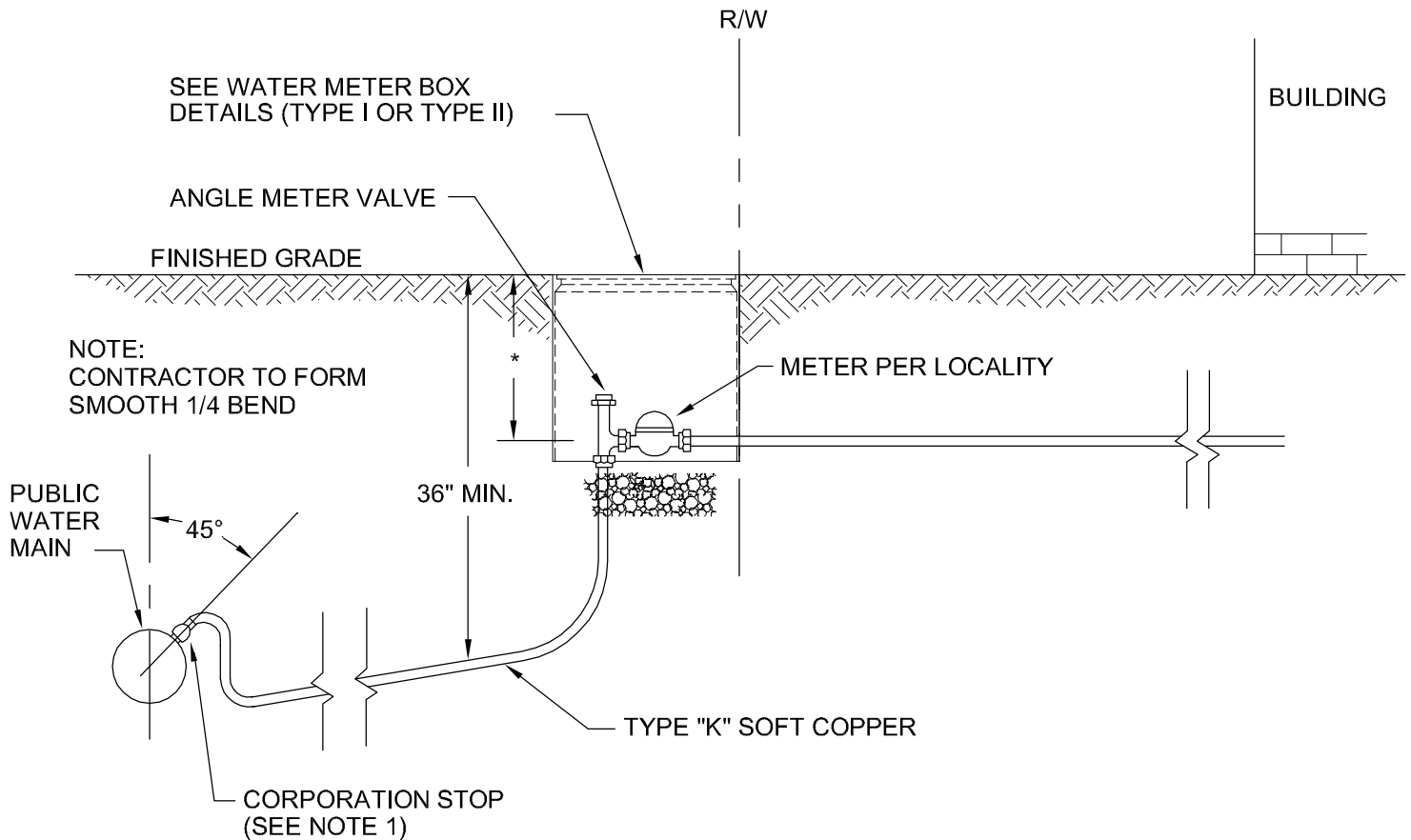


- * TYPE I WATER METER BOX: 7.5"-22" AS APPROVED BY LOCALITY
TYPE II WATER METER BOX: 10.25"-22" AS APPROVED BY LOCALITY



NOTES:

1. ALL DUCTILE IRON MAINS, SIX INCHES IN DIAMETER AND LARGER, MAY BE TAPPED WITHOUT SADDLES. WHERE PVC MAINS ARE PERMITTED BY LOCALITIES, THE CONNECTION TO A PVC MAIN MUST BE MADE WITH A TAPPING SADDLE. TAPPING SADDLES TO BE INSTALLED IN ACCORDANCE WITH THE MANUFACTURERS SPECIFICATIONS. ALL TAPPING SADDLES TO BE STAINLESS STEEL OR EPOXY COATED.
2. METER SETTINGS ARE FOR RESIDENTIAL USE. METER SHALL BE 5/8" MINIMUM THRU 1" MAXIMUM.
3. WHERE CURB & GUTTER AND SIDEWALK EXIST, INSTALL METER BETWEEN THE CURB & GUTTER AND THE SIDEWALK.

WATER SERVICE INSTALLATION DETAIL

NOT TO SCALE

REFERENCE 200,801	CATEGORY WATER DISTRIBUTION	DATE 12/10	SHEET No. 1 OF 1	DETAIL No. WD_02
----------------------	--------------------------------	---------------	---------------------	---------------------