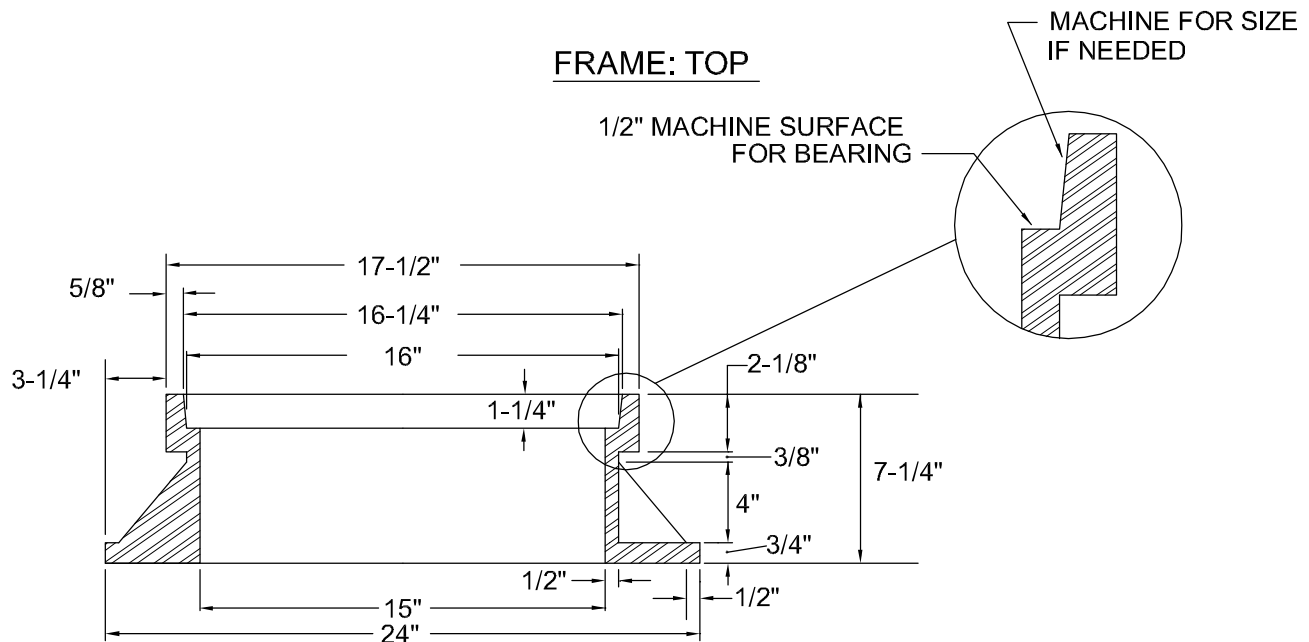


FRAME: TOP



NOTES:

SECTION A-A

1. VALVE BOX FRAME AND COVER TO BE SUPPLIED BY CAPITAL FOUNDRY OF VIRGINIA, INC., MODEL #NPN-15*N, 160 LBS., OR APPROVED EQUAL.
2. ALL GRAY IRON CASTINGS SHALL CONFORM TO LATEST EDITION OF ASTM A-48, CLASS 30 AND SHALL BE OF UNIFORM QUALITY.
3. ALL CASTING DIMENSIONS SHALL HAVE A TOLERANCE OF 1/8"±.
4. ALL CASTINGS SHALL BE CLEANED BY SHOT BLASTING AND HAND CHIPPING UTILIZING STANDARD INDUSTRY PRACTICES PRIOR TO SHOP APPLICATION OF ASPHALTIC COATING, BY DIPPING.

STANDARD VALVE BOX FRAME AND COVER

NOT TO SCALE

REFERENCE 200,801,803	CATEGORY WATER & SANITARY	DATE 12/10	SHEET No. 2 OF 2	DETAIL No. WS_01
--------------------------	------------------------------	---------------	---------------------	---------------------