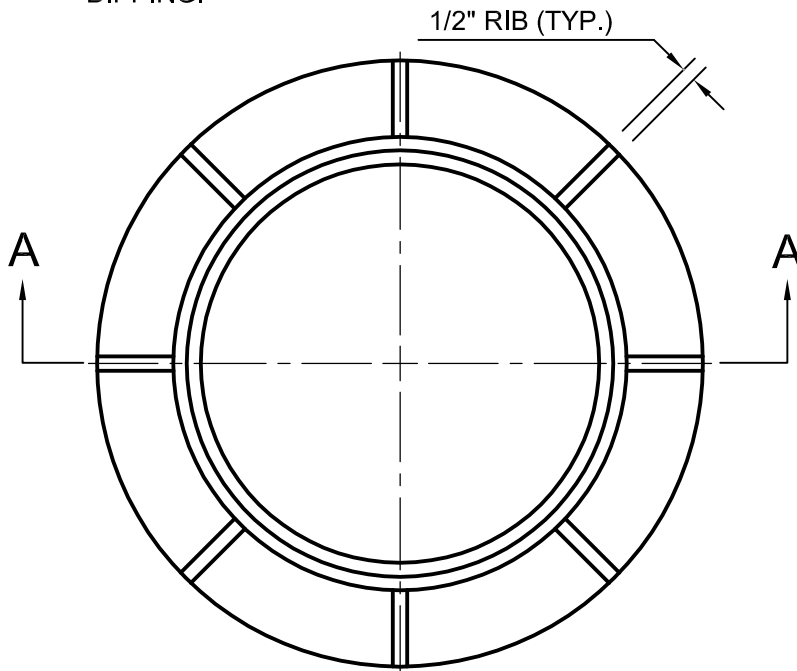
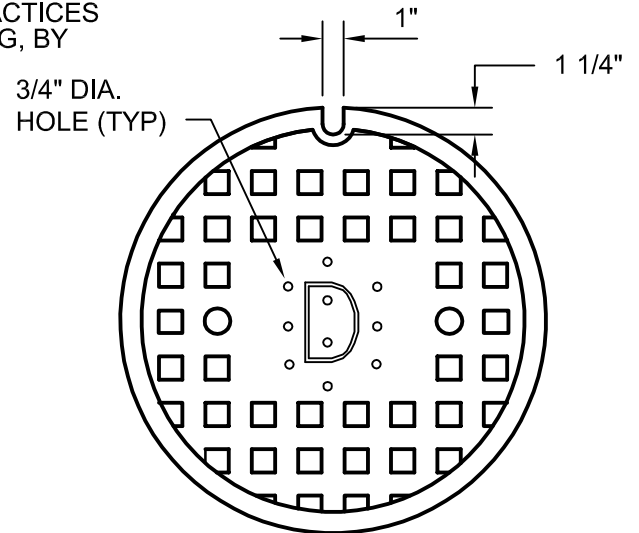


NOTES:

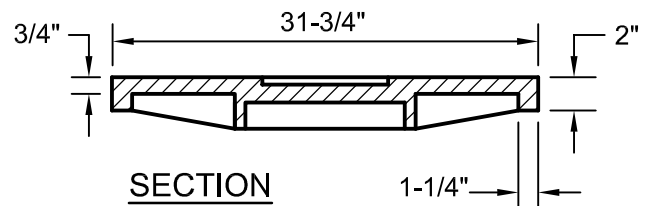
1. CASTING AND COVER TO BE SUPPLIED BY CAPITAL FOUNDRY OF VIRGINIA, INC. OR APPROVED EQUAL.
2. ALL GRAY IRON CASTINGS SHALL CONFORM TO LATEST EDITION OF ASTM A-48, CLASS 30 AND SHALL BE OF UNIFORM QUALITY.
3. ALL CASTING DIMENSIONS SHALL HAVE A TOLERANCE OF $1/8"$ ±.
4. ALL CASTINGS SHALL BE CLEANED BY SHOT BLASTING AND HAND CHIPPING UTILIZING STANDARD INDUSTRY PRACTICES PRIOR TO SHOP APPLICATION OF ASPHALTIC COATING, BY DIPPING.



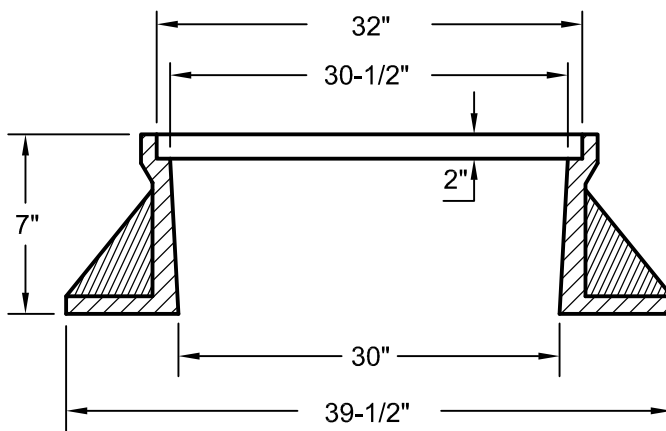
PLAN: CASTING



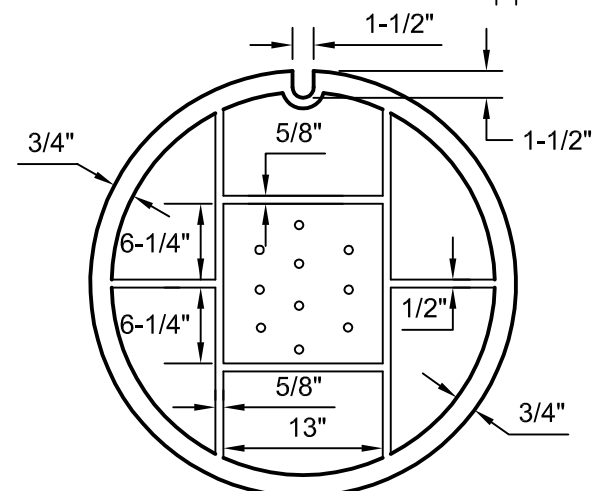
TOP VIEW: COVER



SECTION



SECTION A-A



BOTTOM VIEW: COVER

STORM DRAIN CASTING & COVER (30")

NOT TO SCALE

REFERENCE
200,302

CATEGORY
DRAINAGE STRUCTURES

DATE
6/16

SHEET No.
1 OF 1

DETAIL No.
DS_01