

SEE DS_02, SHEET 2 OF 2 FOR NOTES.

SECTION A-A

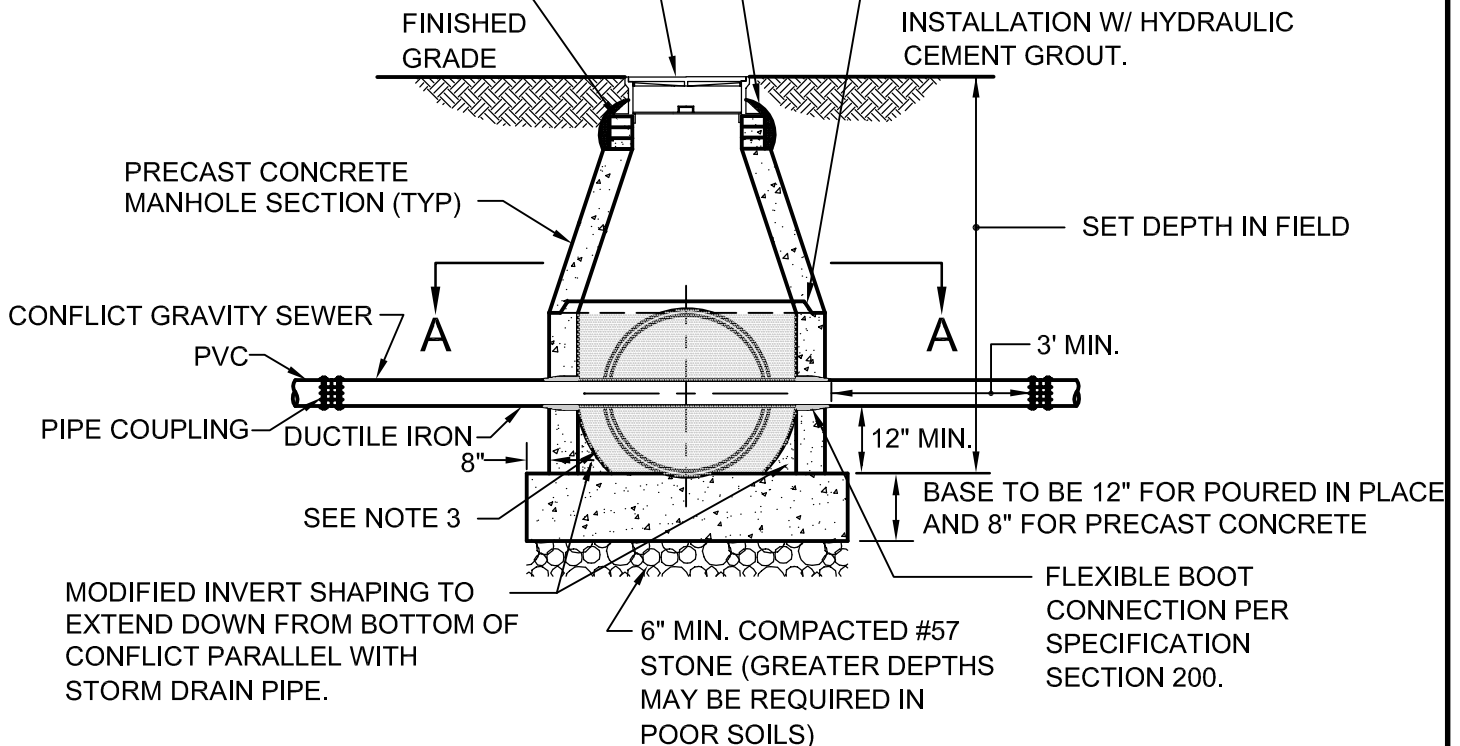
PRECAST CONCRETE
ADJUSTMENT RING (TYP)

RINGS TO BE COVERED AND SEALED
SMOOTH ON ALL INSIDE SURFACES,
3/8" THICK (MIN.) WITH HYDRAULIC
CEMENT HIGH STRENGTH GROUT

SEE SANITARY SEWER MANHOLE
CASTING AND COVER (24") DETAILS

MANHOLE CASTING AND ADJUSTMENT RINGS
TO BE SET & EMBEDDED IN BUTYL JOINT
MATERIAL AND CAPPED WITH HYDRAULIC
CEMENT GROUT OVER FRAME FLANGE,
ADJUSTMENT RINGS AND SECTION.

JOINT SEAL TO BE IN ACCORDANCE
WITH SPECIFICATIONS SECTION 200.
GROUT INSIDE AND OUT AFTER
INSTALLATION W/ HYDRAULIC
CEMENT GROUT.



PRECAST CONCRETE CONFLICT MANHOLE

NOT TO SCALE

REFERENCE
200,302

CATEGORY
DRAINAGE STRUCTURES

DATE
6/16

SHEET No.
1 OF 2

DETAIL No.
DS_02

NOTES:

1. ALL CONFLICT MANHOLES TO BE APPROVED BY THE LOCALITY PRIOR TO THEIR USE.
2. FOR USE ON STORM DRAIN SYSTEMS 36" OR LESS IN DIAMETER AND WHEN THE CONFLICTING GRAVITY SEWER DOES NOT EXCEED 18" IN DIAMETER. ALL OTHER SITUATIONS REQUIRE A SPECIAL DESIGN AND LOCALITY APPROVAL.
3. SHADED AREA MUST EQUAL 1.5 (MIN.) TIMES THE CROSS SECTION AREA OF THE STORM DRAIN.
4. LOWER MANHOLE INVERT BELOW STORM DRAIN INVERT WHEN NECESSARY TO MAINTAIN MINIMUM 12" CLEARANCE UNDER CONFLICT SANITARY SEWER MAIN.
5. PRECAST CONCRETE MANHOLE TO BE IN COMPLIANCE WITH ASTM C-478.
6. WALL THICKNESS TO BE 5" MINIMUM FOR 48" INSIDE DIAMETER MANHOLES AND 6" MINIMUM FOR 60" INSIDE DIAMETER MANHOLES.
7. PROVIDE A MAXIMUM OF TWO LIFT HOLES PER SECTION. PLUG HOLES WATERTIGHT WITH RUBBER PLUGS AND GROUT AFTER INSTALLATION.
8. POURED IN PLACE BASE SLAB: REINFORCE WITH #5 REBAR @ 12" O.C. EACH WAY. ALL REBAR TO HAVE MIN. 1-1/2" COVER. CONCRETE TO BE CLASS A-3.
9. NO SEWER PIPE JOINTS ALLOWED INSIDE CONFLICT MANHOLE.

PRECAST CONCRETE CONFLICT MANHOLE

NOT TO SCALE

REFERENCE
200,302

CATEGORY
DRAINAGE STRUCTURES

DATE
6/16

SHEET No.
2 OF 2

DETAIL No.
DS_02