

LOCK BAR 1" X 1" STEEL,  
23-1/2" LONG W/ BRASS  
BOLT 5/8" X 4" LONG,  
FULL THREAD

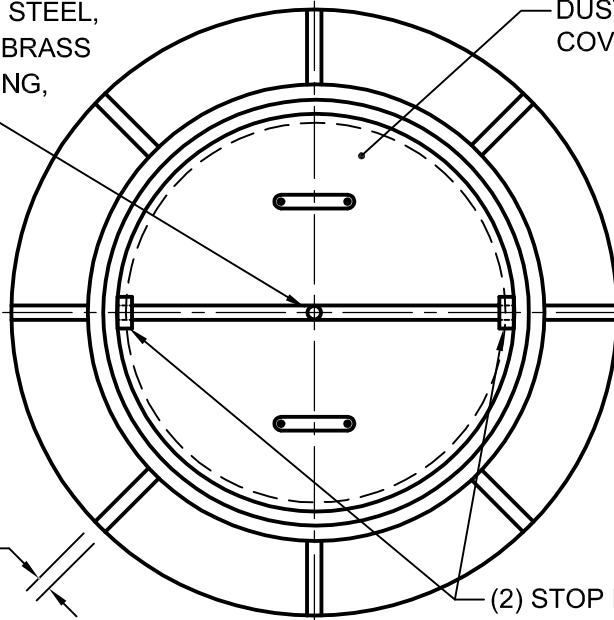
DUST  
COVER



A

A

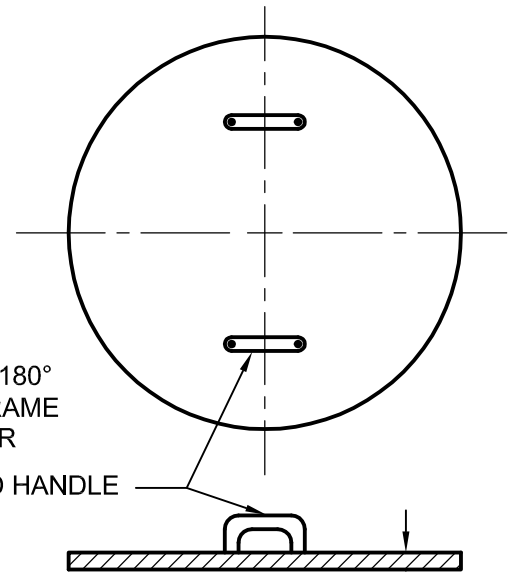
1/2" RIB (TYP.)



PLAN: CASTING

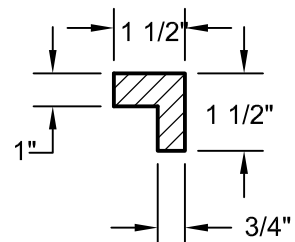
(2) STOP LUGS AT 180°  
FURNISHED ON FRAME  
TO HOLD LOCK BAR

1-1/4" ROUND HANDLE



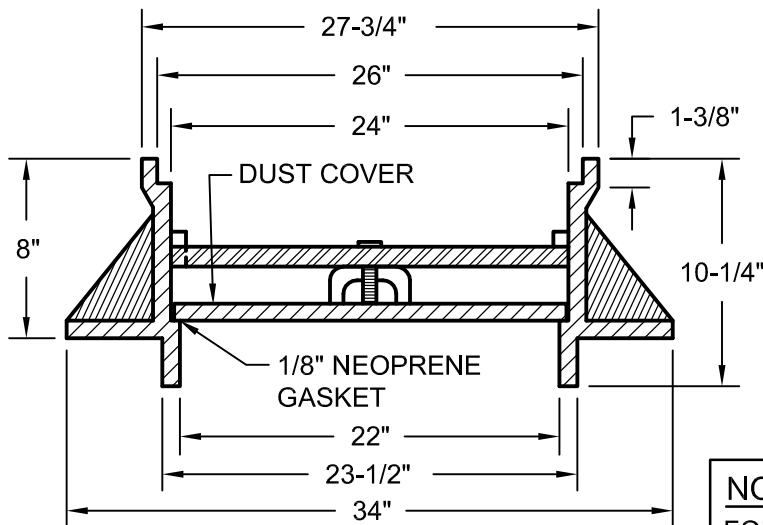
5/8"

DUST COVER



STOP LUG  
SIDE VIEW

NOTE: USE SANITARY SEWER MANHOLE  
COVER (24") FOR THIS APPLICATION



SECTION A-A

NOTE:

FOR NON-WATERTIGHT APPLICATIONS  
DELETE THE LOCK BAR AND NEOPRENE  
GASKET

NOTES:

1. MANHOLE CASTING TO BE SUPPLIED BY CAPITAL FOUNDRY OF VIRGINIA, INC. OR APPROVED EQUAL.
2. ALL GRAY IRON CASTINGS SHALL CONFORM TO LATEST EDITION OF ASTM A-48, CLASS 30 AND SHALL BE OF UNIFORM QUALITY.
3. ALL CASTING DIMENSIONS SHALL HAVE A TOLERANCE OF 1/8"±.
4. ALL CASTINGS SHALL BE CLEANED BY SHOT BLASTING AND HAND CHIPPING UTILIZING STANDARD INDUSTRY PRACTICES PRIOR TO SHOP APPLICATION OF ASPHALTIC COATING, BY DIPPING.

## SANITARY SEWER MANHOLE CASTING (24")

NOT TO SCALE

REFERENCE  
200,802

CATEGORY  
SANITARY SYSTEMS

DATE  
6/16

SHEET No.  
1 OF 1

DETAIL No.  
SS\_09