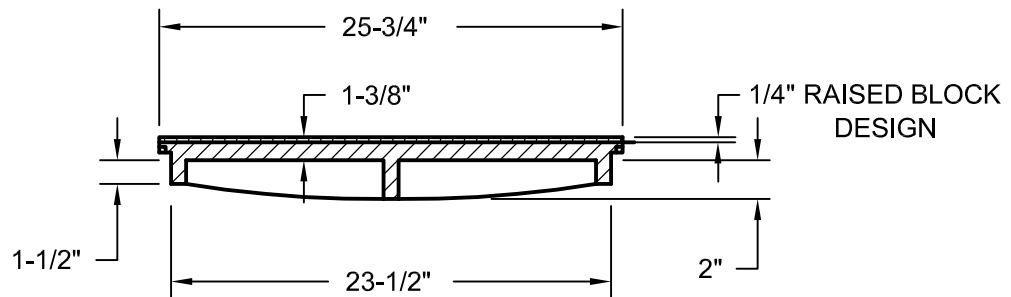
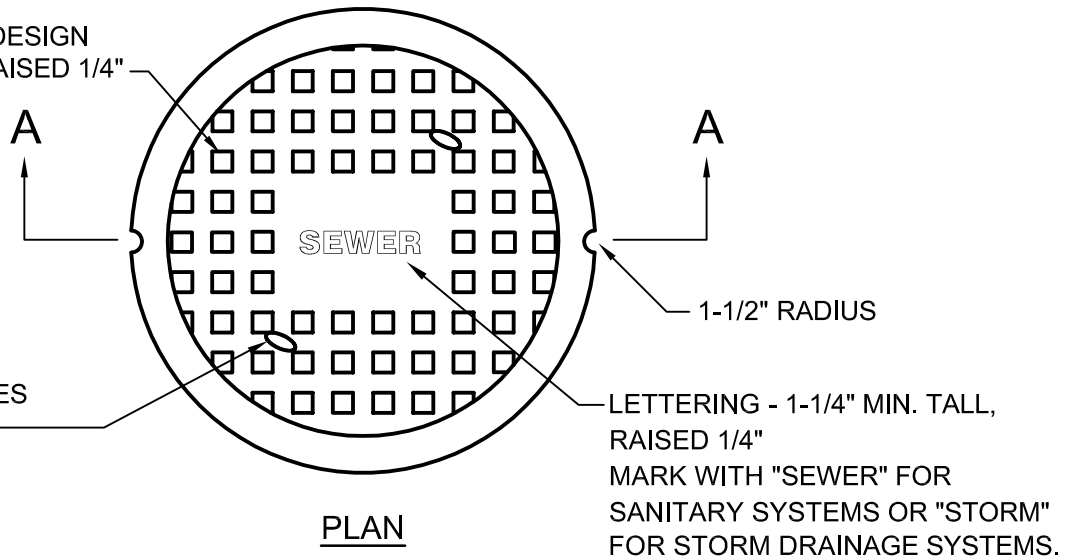


RAISED BLOCK DESIGN
1-1/2" X 1-1/2", RAISED 1/4"

(2) VENT HOLES
3/4" X 1-1/4"



NOTES:

1. MANHOLE COVER TO BE SUPPLIED BY CAPITAL FOUNDRY OF VIRGINIA, INC., OR APPROVED EQUAL.
2. ALL GRAY IRON CASTINGS SHALL CONFORM TO LATEST EDITION OF ASTM A-48, CLASS 30 AND SHALL BE OF UNIFORM QUALITY.
3. ALL CASTING DIMENSIONS SHALL HAVE A TOLERANCE OF 1/8"±.
4. ALL CASTINGS SHALL BE CLEANED BY SHOT BLASTING AND HAND CHIPPING UTILIZING STANDARD INDUSTRY PRACTICES PRIOR TO SHOP APPLICATION OF ASPHALTIC COATING, BY DIPPING.

SANITARY SEWER MANHOLE COVER (24")

NOT TO SCALE

REFERENCE
200,802

CATEGORY
SANITARY SYSTEMS

DATE
6/16

SHEET No.
1 OF 1

DETAIL No.
SS_10