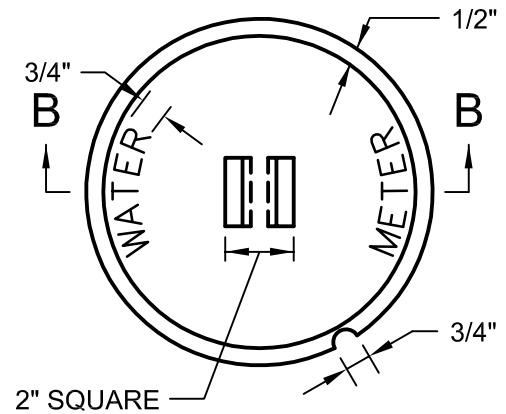
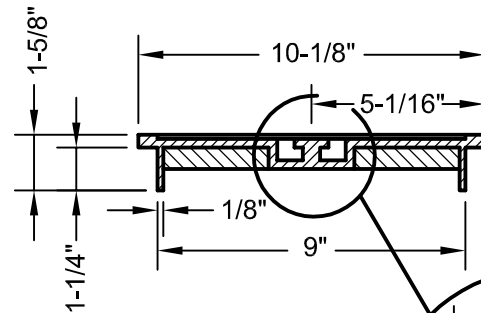


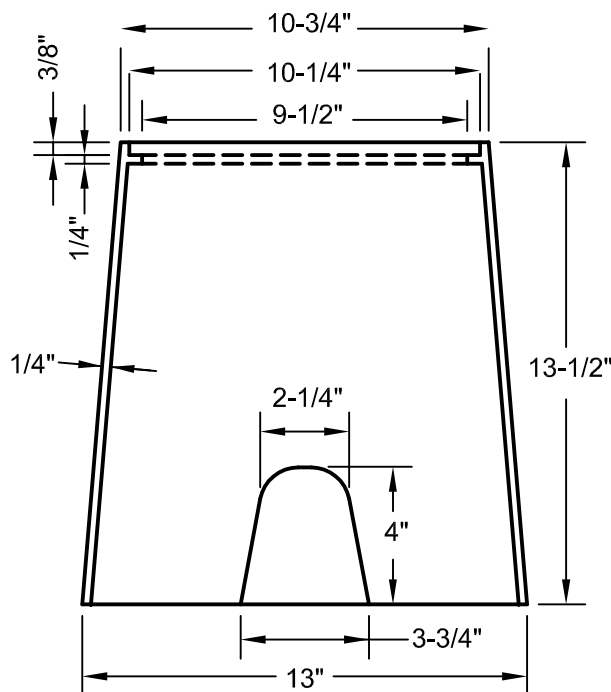
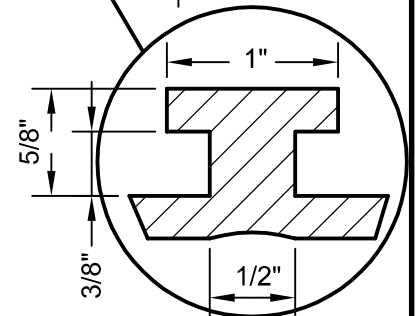
PLAN: BOX



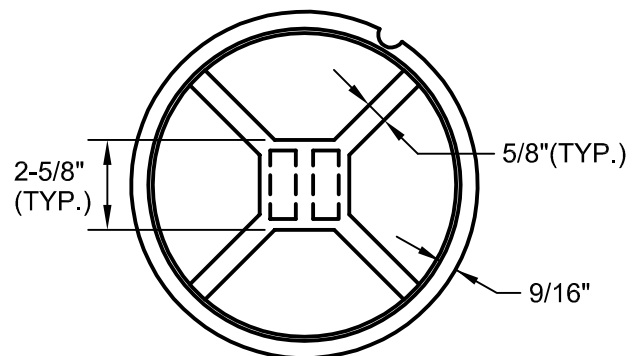
TOP VIEW: COVER



SECTION B-B



SECTION A-A



BOTTOM VIEW: COVER

SEE WD\_04, SHEET 2 OF 2 FOR NOTES.

## WATER METER BOX (TYPE II) (5/8" TO 1" WATER METER ASSEMBLIES)

NOT TO SCALE

NOTES:

1. METER BOX TO BE SUPPLIED BY CAPITAL FOUNDRY OF VIRGINIA, INC., (MODEL #MBX-NPN-1, FRAME WEGHT= 35 LBS., LID WEIGHT= 10 LBS.) OR APPROVED EQUAL.
2. ALL GRAY IRON CASTINGS SHALL CONFORM TO LATEST EDITION OF ASTM A-48, CLASS 30 AND SHALL BE OF UNIFORM QUALITY.
3. ALL CASTING DIMENSIONS SHALL HAVE A TOLERANCE OF 1/8"±.
4. ALL CASTINGS SHALL BE CLEANED BY SHOT BLASTING AND HAND CHIPPING UTILIZING STANDARD INDUSTRY PRACTICES PRIOR TO SHOP APPLICATION OF ASPHALTIC COATING, BY DIPPING.

**WATER METER BOX (TYPE II)**

NOT TO SCALE

REFERENCE  
200,801

CATEGORY  
WATER DISTRIBUTION

DATE  
6/16

SHEET No.  
2 OF 2

DETAIL No.  
WD\_04