



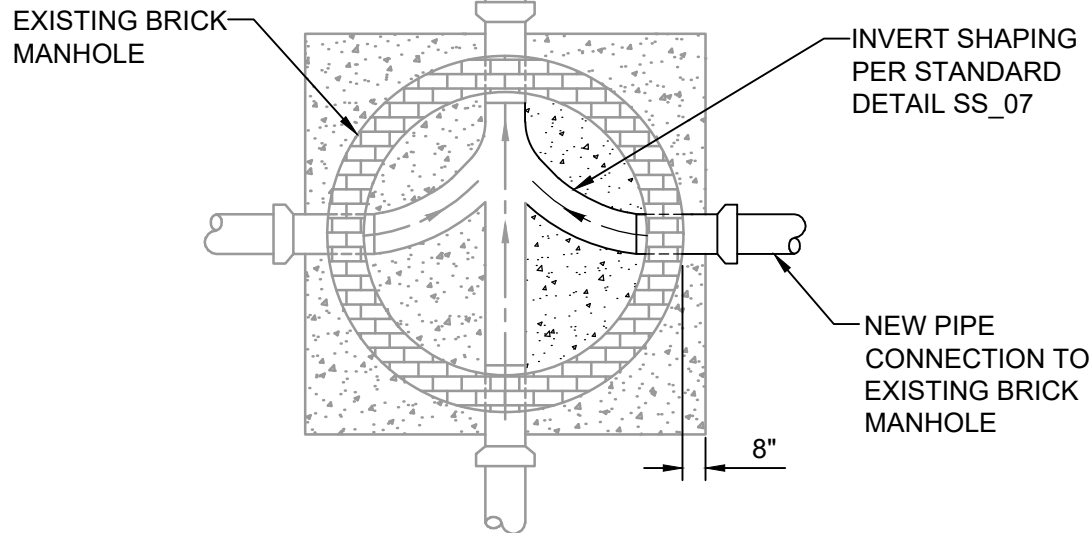
REGIONAL CONSTRUCTION STANDARDS

SIXTH EDITION

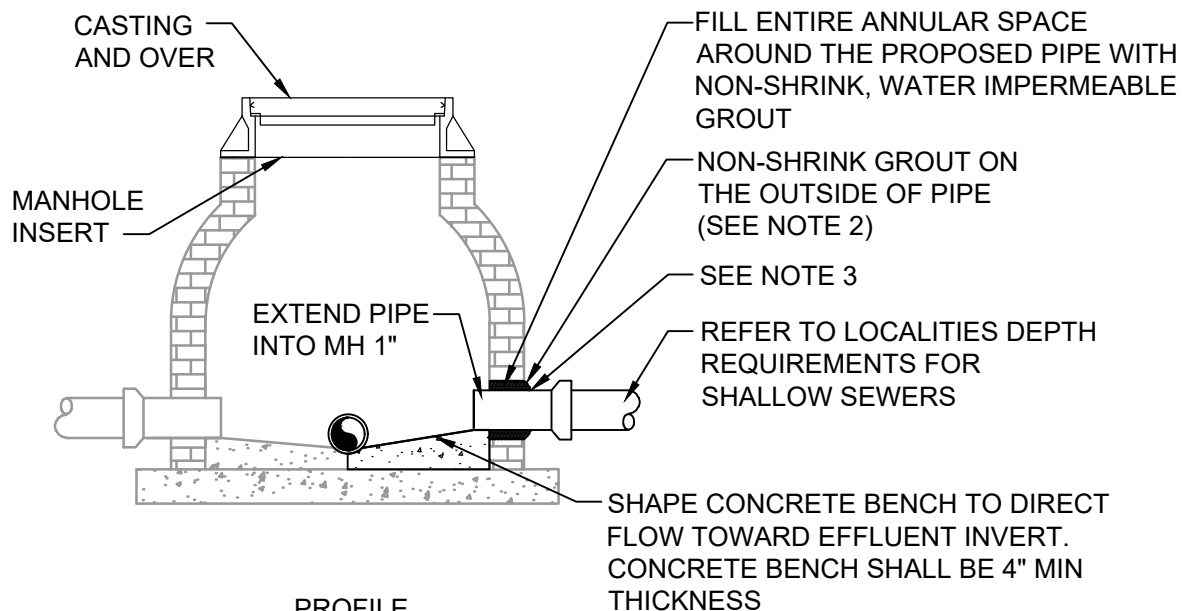
Publication Update 6.16

(Full Committee Approved Proposed Revision 6.17 –
Connection to Existing Brick Manhole
As Publication Update 6.16)

October 29, 2020



LOWER PLAN



PROFILE

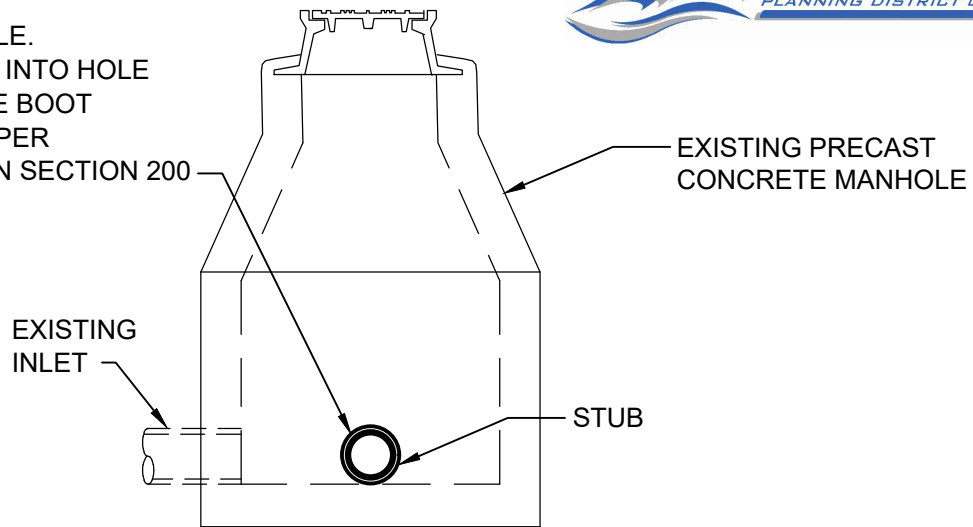
NOTES:

1. CONCRETE SHALL BE READY-MIX 4000 PSI COMPRESSIVE STRENGTH MINIMUM.
2. MANHOLE WALL AT PIPE PENETRATION SHALL BE CLEANED AND HAVE A MINIMUM OF 250 MILS OF NON-SHRINK GROUT APPLIED TO A MINIMUM OF 6-INCHES AROUND THE NEW PIPE OPENING.
3. OPENINGS SHOULD BE LIMITED TO NO MORE THAN 1.5 TIMES THE DIAMETER OF THE PROPOSED PIPE, AND NO MORE THAN 12-INCHES GREATER THAN THE PROPOSED PIPE.

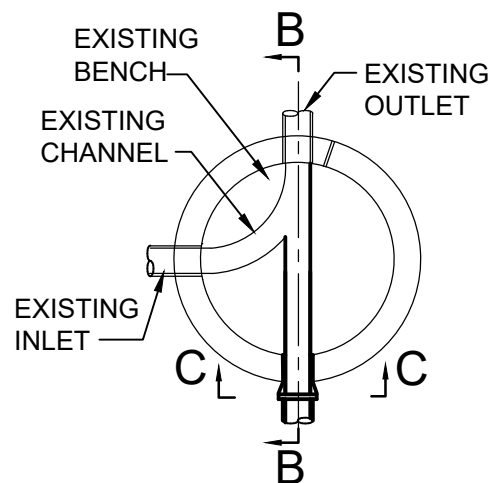
CONNECTION TO EXISTING BRICK SEWER MANHOLE

NOT TO SCALE

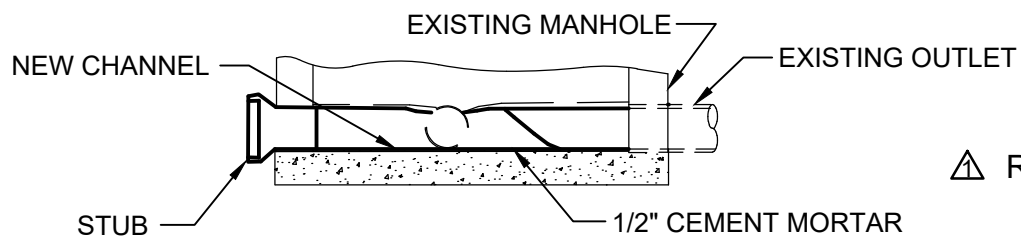
CORE CUT HOLE.
FASTEN STUB INTO HOLE
WITH FLEXIBLE BOOT
CONNECTION PER
SPECIFICATION SECTION 200



SECTION C-C



BASE PLAN OF
PRE-CAST MANHOLE



SECTION B-B

CONNECTION TO EXISTING PRECAST CONCRETE MANHOLES

NOT TO SCALE

△ REVISED 8/20