



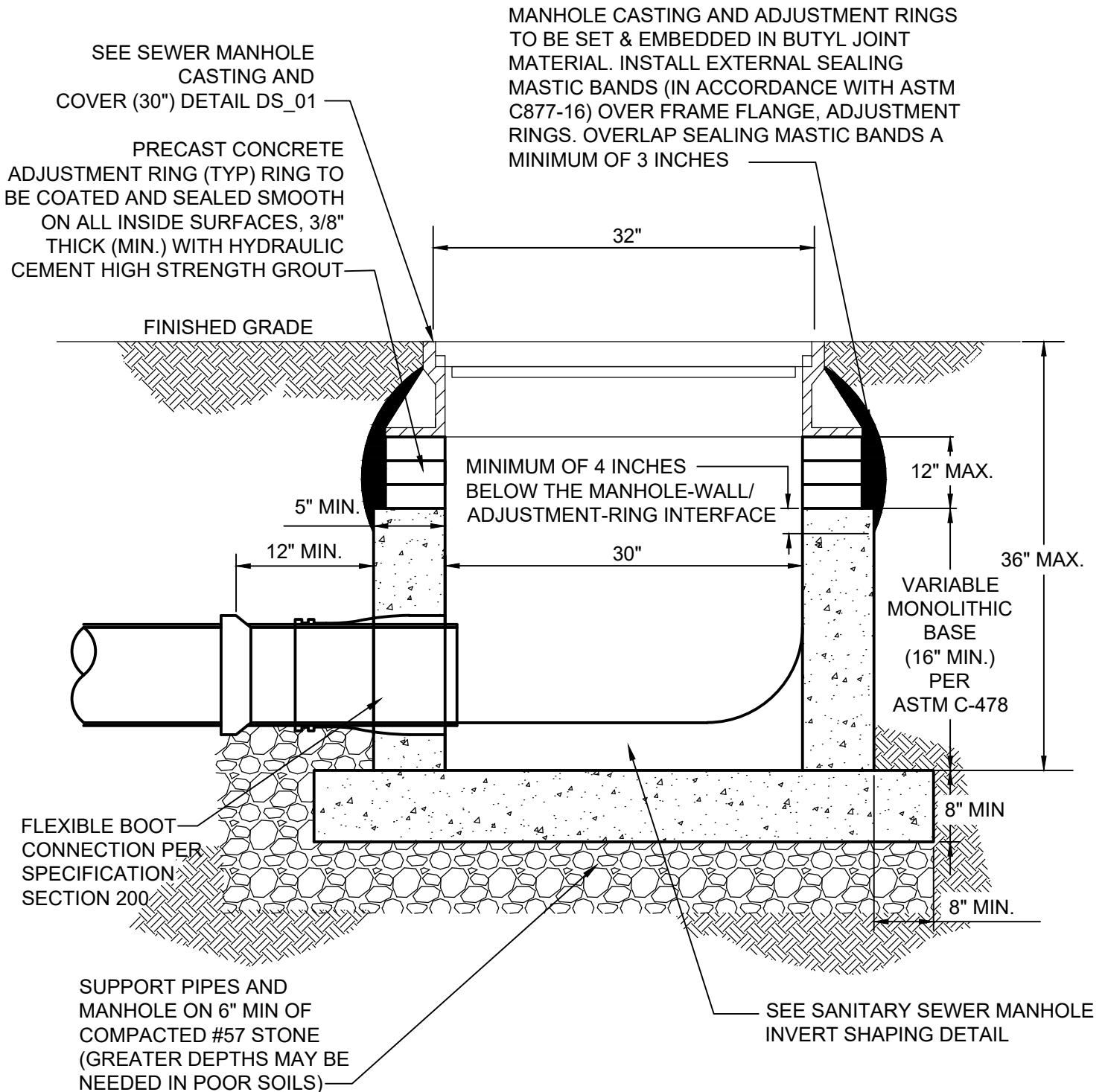
REGIONAL CONSTRUCTION STANDARDS

SIXTH EDITION

Publication Update 6.15

(Full Committee Approved Proposed Revision 6.16 –
Shallow MH Alternate As Publication Update 6.15)

October 29, 2020



PRECAST DEAD END CONCRETE SHALLOW MANHOLE - ALTERNATE

NOT TO SCALE

REFERENCE 200,802	CATEGORY SANITARY SYSTEM	DATE 8/20	SHEET No. 1 OF 2	DETAIL No. SS_22
----------------------	-----------------------------	--------------	---------------------	---------------------

NOTES:

1. MINIMUM WALL THICKNESS TO BE 5".
2. PRECAST MANHOLE TO BE IN COMPLIANCE WITH ASTM C-478.
3. TO BE USED ONLY WITH OWNER APPROVAL.
4. MANHOLE IS TO BE NO DEEPER THAN 36 INCHES FROM CASTING INCLUSIVE OF RINGS AND CASTING.
5. PIPE IS TO EXIT AT THE INVERT OF THE STRUCTURE.
6. PROVIDE A MAXIMUM OF TWO LIFT HOLES PER SECTION. PLUG LIFT HOLE WATERTIGHT WITH RUBBER PLUGS AND GROUT AFTER INSTALLATION.
7. A REQUEST CAN BE MADE TO SUBSTITUTE BRICK FOR PRECAST. INTERIORS OF BRICK AND PRECAST STRUCTURES SHALL BE COATED WITH APPROVED EPOXY MATERIALS PER SECTION 200. IN LIEU OF COATING WITH EPOXY, PRECAST MANHOLE SECTIONS, CONCRETE ADJUSTMENT RINGS, BENCH AND HYDRAULIC CEMENT GROUT MAY EMPLOY A MICROBIAL ADDITIVE SUCH AS CONSHIELD OR APPROVED EQUAL, IN THE CONCRETE/CEMENT MIX.
8. SEWER LATERALS ARE NOT ALLOWED TO CONNECT TO TERMINAL SHALLOW MANHOLES UNLESS APPROVED ON A SITE SPECIFIC BASIS BY THE LOCALITY.

PRECAST DEAD END CONCRETE SHALLOW MANHOLE - ALTERNATE

NOT TO SCALE

REFERENCE 200,802	CATEGORY SANITARY SYSTEM	DATE 8/20	SHEET No. 2 OF 2	DETAIL No. SS_22
----------------------	-----------------------------	--------------	---------------------	---------------------

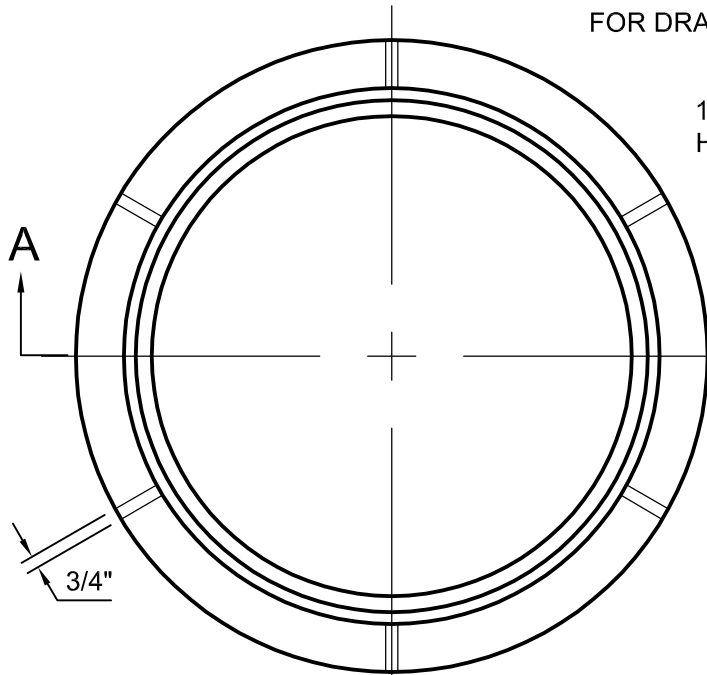
NOTES:

1. CASTING AND COVER TO BE SUPPLIED BY CAPITOL FOUNDRY OF VIRGINIA, INC. (MODEL #I-MH-30-SWR) OR APPROVED EQUAL.
2. ALL GRAY IRON CASTINGS SHALL CONFORM TO LATEST EDITION OF ASTM A-48, CLASS 35B AND SHALL BE OF UNIFORM QUALITY.
3. ALL CASTING DIMENSIONS SHALL HAVE A TOLERANCE OF $1/8"$ ±.
4. ALL CASTINGS SHALL BE CLEANED BY SHOT BLASTING AND HAND CHIPPING UTILIZING STANDARD INDUSTRY PRACTICES PRIOR TO SHOP APPLICATION OF ASPHALTIC COATING, BY DIPPING.

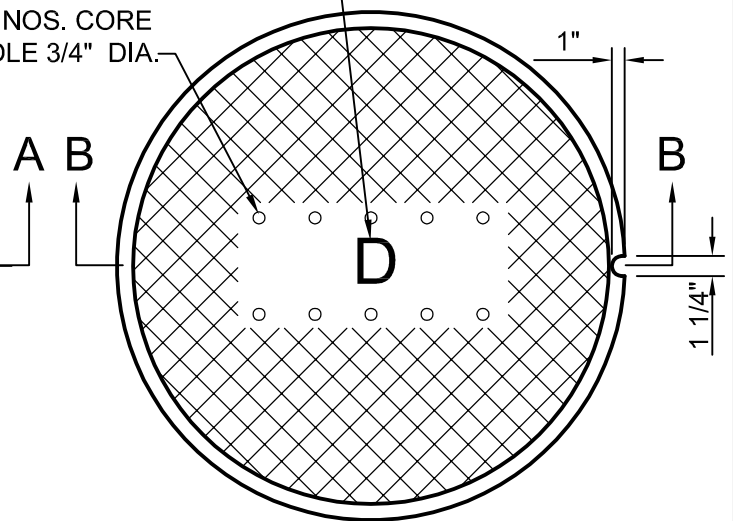


"S" FOR SANITARY SEWER OR "D" FOR DRAINAGE, AS APPROPRIATE

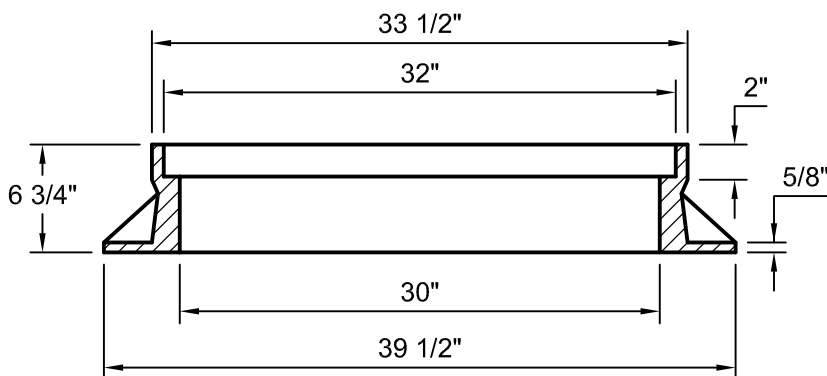
10 NOS. CORE HOLE $3/4"$ DIA.



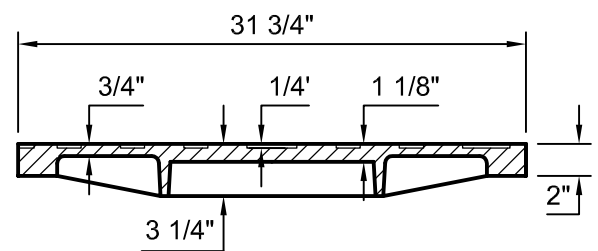
PLAN



PLAN



SECTION A-A



SECTION B-B

STORM DRAIN CASTING AND COVER (30")

NOT TO SCALE

△ REVISED 3/20

REFERENCE
200,302

CATEGORY
DRAINAGE STRUCTURES

DATE
6/16

SHEET No.
1 OF 1

DETAIL No.
DS_01