



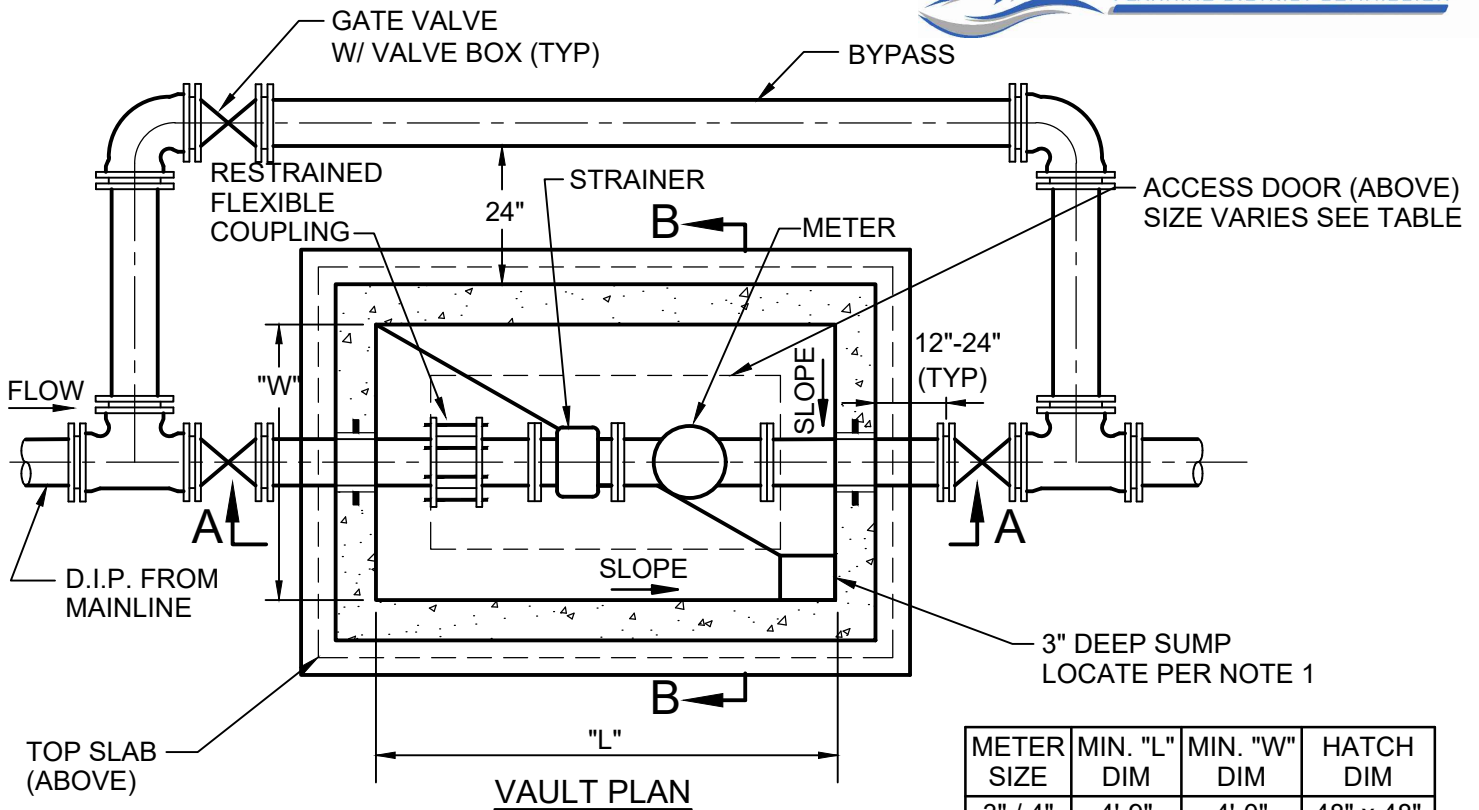
REGIONAL CONSTRUCTION STANDARDS

SIXTH EDITION

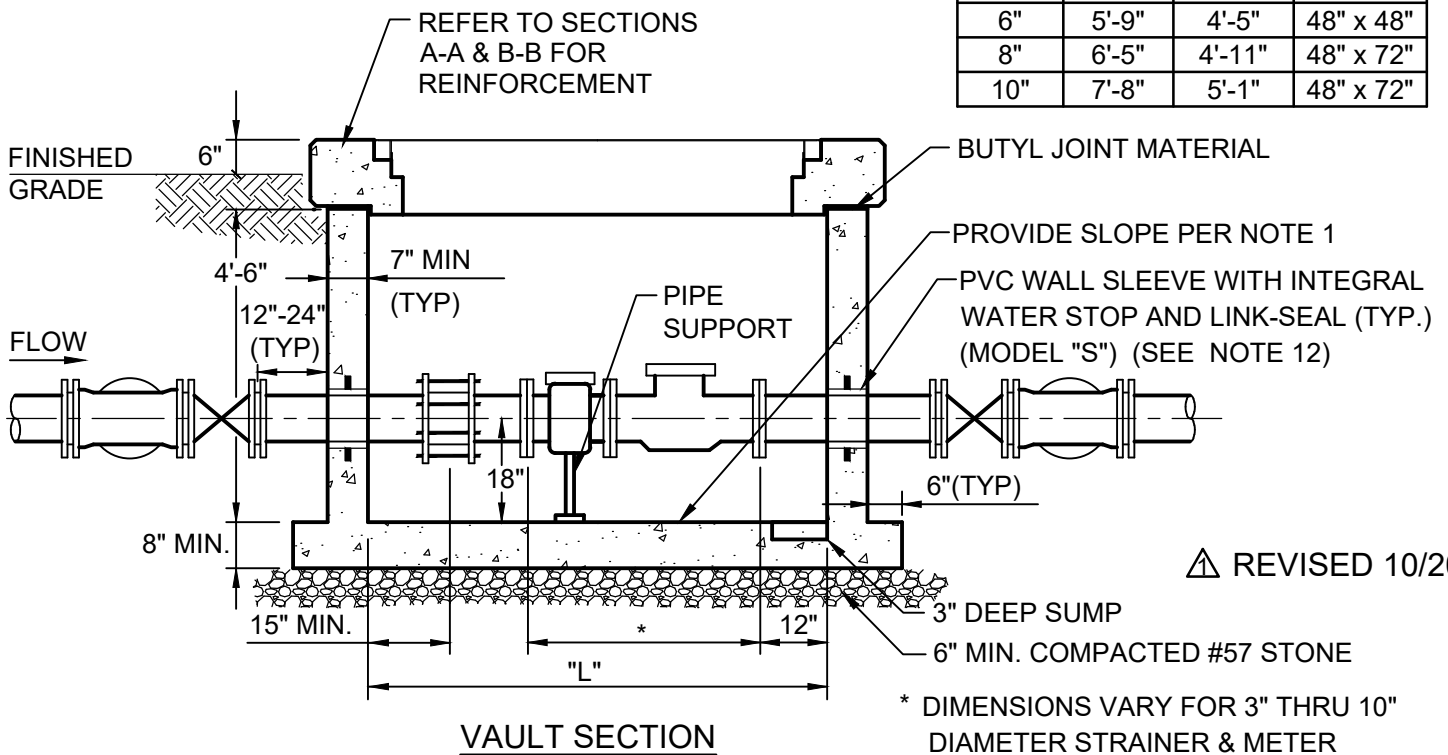
Publication Update 6.12

(Full Committee Approved Proposed Revision 6.13 –
Precast Meter Vault As Publication Update 6.12)

October 29, 2020



METER SIZE	MIN. "L" DIM	MIN. "W" DIM	HATCH DIM
3" / 4"	4'-9"	4'-0"	48" x 48"
6"	5'-9"	4'-5"	48" x 48"
8"	6'-5"	4'-11"	48" x 72"
10"	7'-8"	5'-1"	48" x 72"



PRECAST CONCRETE VAULT- H2O LOADING (3" THRU 10" WATER METER ASSEMBLIES)

NOT TO SCALE

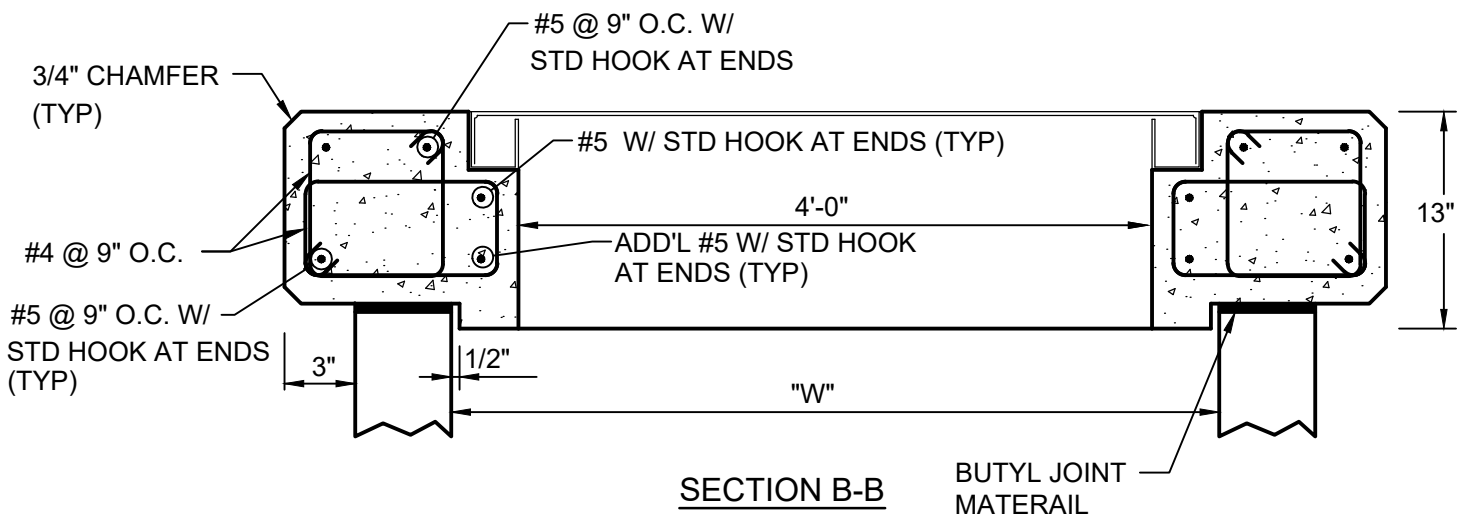
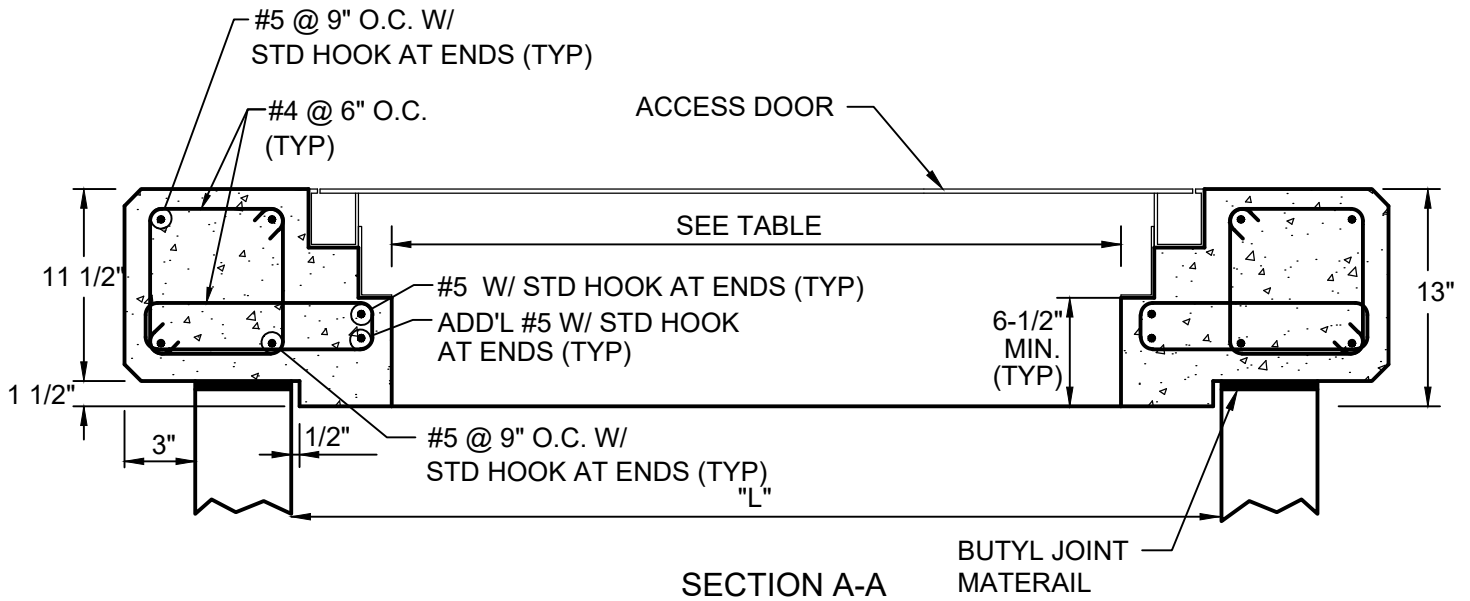
REFERENCE
200,801

CATEGORY
WATER DISTRIBUTION

DATE
6/16

SHEET No.
1 OF 3

DETAIL No.
WD_15



△ REVISED 10/20

PRECAST CONCRETE VAULT- H20 LOADING (3" THRU 10" WATER METER ASSEMBLIES)

NOT TO SCALE

REFERENCE
200,801

CATEGORY
WATER DISTRIBUTION

DATE
6/16

SHEET No.
2 OF 3

DETAIL No.
WD_15

NOTES:

1. FLOOR OF VAULT TO BE SLOPED 1/4" PER FOOT TO A 6"X6" (3" DEEP) SUMP IN RIGHT BACK (PROPERTY SIDE) CORNER OF VAULT.
2. REDUCERS AS APPROPRIATE TO BE PLACED OUTSIDE THE BYPASS PIPING.
3. FLANGE ADAPTERS TO BE USED TO CONNECT METER TO PIPE.
4. METER, PIPE SUPPORT, AND DOOR KEY TO BE SUPPLIED BY THE CONTRACTOR AND DELIVERED TO THE OWNER.
5. ALL PIPES TO BE DUCTILE IRON, CLASS 53.
6. TWO 1-5/8" DIAMETER HOLES ARE TO BE DRILLED IN THE LEFT FRONT CORNER OF LID FOR REMOTE READ EQUIPMENT.
7. RECESSED LIFTING ANCHORS SHALL BE PROVIDED AT EACH CORNER OF VAULT LID.
8. VAULT DOORS SHALL BE CENTERED OVER METER LOCATION TO PROVIDE VERTICAL CLEARANCE ABOVE METER AND ASSOCIATED FITTINGS SO THAT THE ASSEMBLY CAN BE LIFTED STRAIGHT OUT OF THE VAULT WITHOUT TILTING. VAULT DOORS SHALL OPEN PARALLEL TO THE INTERIOR WATER LINE PIPING.
9. BILCO JD-AL H20 DOUBLE DOOR HATCH (OR APPROVED EQUAL) CENTERED. DESIGNED TO WITHSTAND H-20 WHEEL LOADINGS SUITABLE FOR USE IN OFF-STREET LOCATIONS WHERE NOT SUBJECTED TO HIGH DENSITY TRAFFIC.
10. INTERIOR AND EXTERIOR COATING PER LOCALITY REQUIREMENTS.
11. THE PRECAST VAULT DESIGN SHALL BE SEALED BY A PROFESSIONAL ENGINEER LICENSED IN THE COMMONWEALTH OF VIRGINIA.
12. PROVIDE ADDITIONAL REINFORCING EACH SIDE OF THE OPENING, EQUAL TO ONE HALF OF THE INTERRUPTED BARS.

△ REVISED 10/20

PRECAST CONCRETE VAULT- H20 LOADING (3" THRU 10" WATER METER ASSEMBLIES)

NOT TO SCALE

REFERENCE 200,801	CATEGORY WATER DISTRIBUTION	DATE 6/16	SHEET No. 3 OF 3	DETAIL No. WD_15
----------------------	--------------------------------	--------------	---------------------	---------------------