



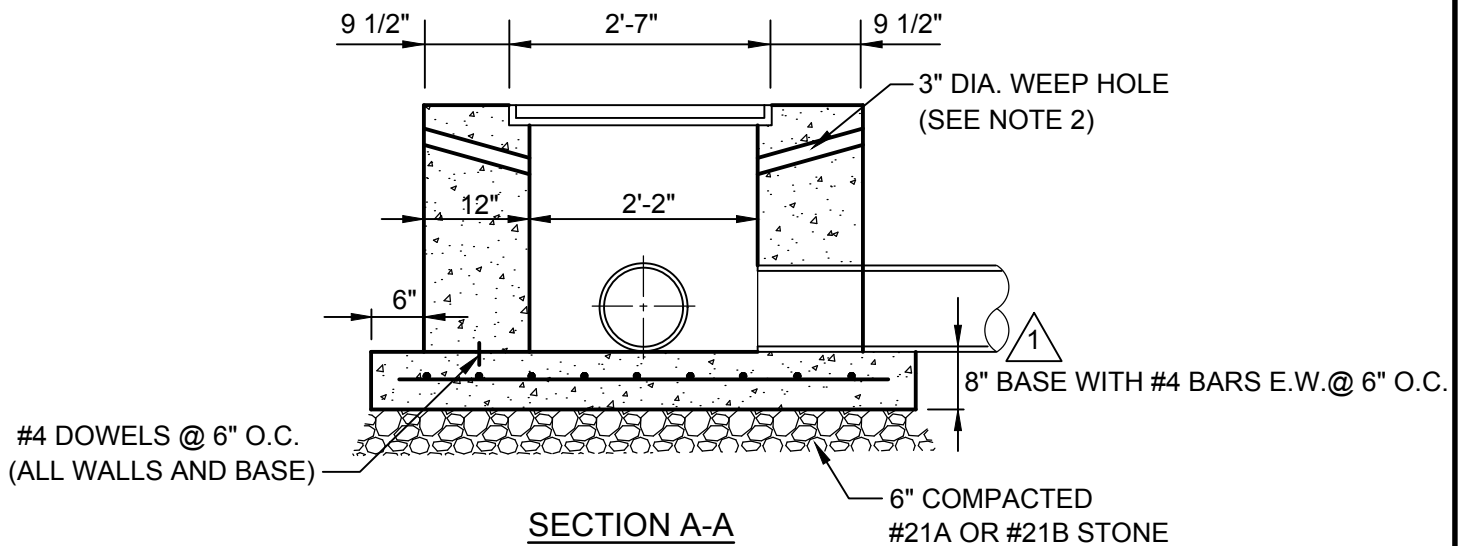
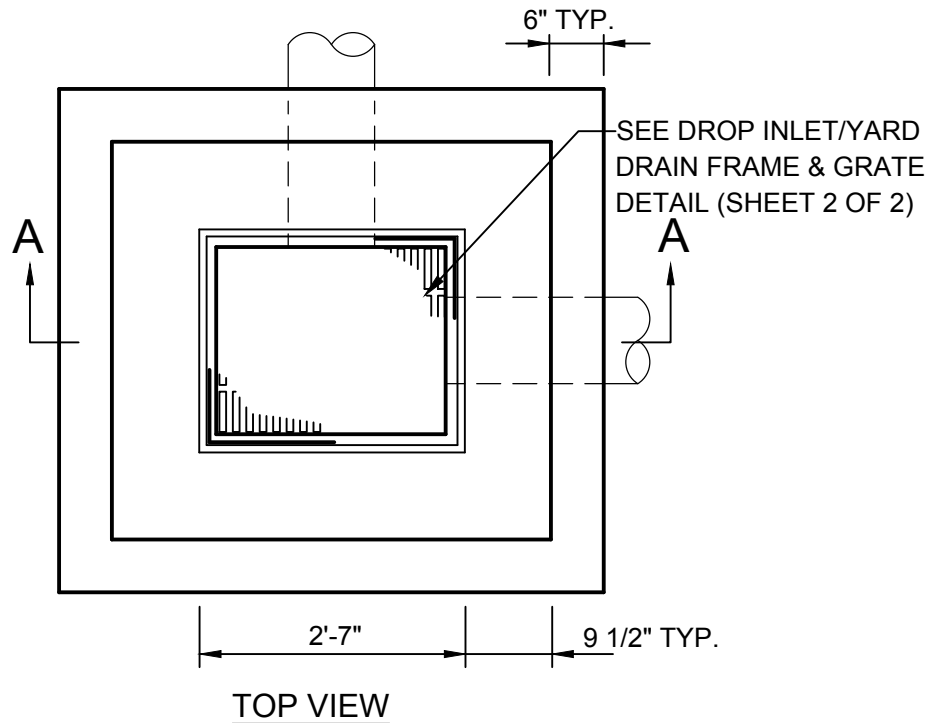
REGIONAL CONSTRUCTION STANDARDS

SIXTH EDITION

Publication Update 6.8

(Full Committee Approved Proposed Revision 6.8 –
Detail DS_05
As Publication Update 6.8)

September 26, 2019



YARD DRAIN

PIPES LESS THAN OR EQUAL TO 24"
MAXIMUM DEPTH = 10'

NOT TO SCALE

 REVISED 5/19

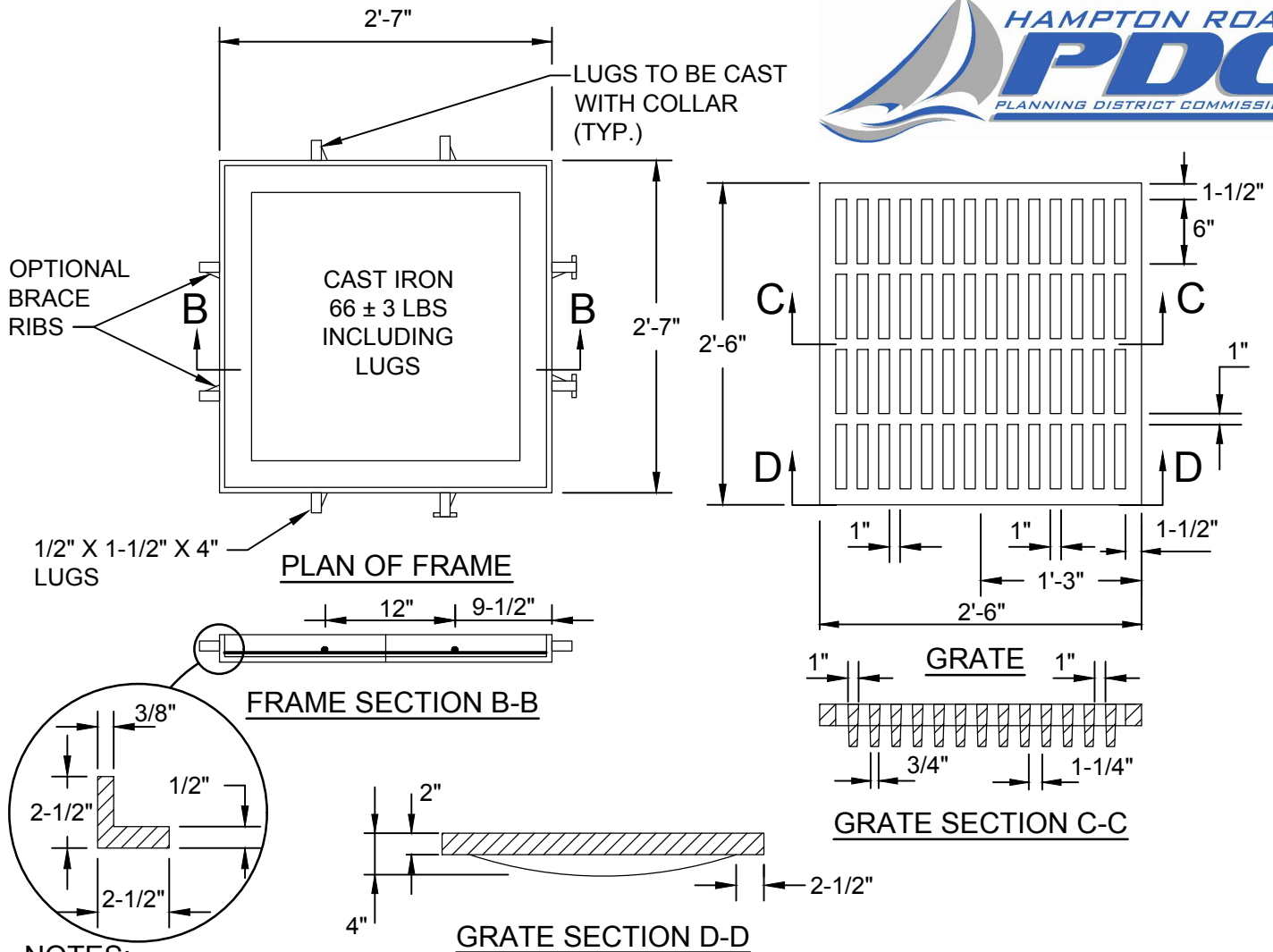
REFERENCE
200,502

CATEGORY
CONCRETE ITEMS

DATE
11/18

SHEET No.
1 OF 2

DETAIL No.
DS_05



NOTES:

1. WHERE PIPE(S) SKEW INTO THE INLET, A LARGER RECTANGULAR BOX MAY BE USED WITH SHOP DRAWINGS SEALED BY A VIRGINIA PROFESSIONAL ENGINEER.
2. 3" WEEP HOLE WITH 12"X12" PLASTIC HARDWARE CLOTH, 1/4" MESH OR GALVANIZED STEEL WIRE, MINIMUM WIRE DIAMETER 0.003", NUMBER 4 MESH HARDWARE CLOTH ANCHORED FIRMLY TO OUTSIDE OF STRUCTURE.
3. STEPS THAT ARE ACCESSIBLE SHALL BE REQUIRED FOR DEPTHS OF 4' OR GREATER. SPECIFIC NEED, LOCATION, AND SPECIFICATION OF STEPS TO BE DETERMINED BY THE LOCALITY.
4. ALL CAST IN PLACE CONCRETE SHALL BE CLASS A-3.
5. REFER TO VDOT ROAD AND BRIDGE STANDARDS, LATEST EDITION FOR MANHOLE AND INLET SHAPING DETAIL.
6. WALL THICKNESS MAY BE REDUCED IF REINFORCING BARS OR PRECAST ITEMS ARE USED, WITH SHOP DRAWINGS SEALED BY A VIRGINIA PROFESSIONAL ENGINEER.
7. PRECAST STRUCTURES (ROUND OR SQUARE WALLS) MAY BE USED WHERE APPROVED BY THE LOCALITY. PRECAST CONCRETE SHALL BE CLASS A-4.
8. ALL GRAY IRON CASTING SHALL CONFORM TO THE LATEST EDITION OF ASTM A-48, CLASS 30 AND SHALL BE OF UNIFORM QUALITY.
9. ALL CASTING DIMENSIONS SHALL HAVE A TOLERANCE OF 1/8" ±.
10. ALL CASTING SHALL BE CLEANED BY SHOT BLASTING AND HAND CHIPPING UTILIZING STANDARD INDUSTRY PRACTICES PRIOR TO SHOP APPLICATION OF ASPHALTIC COATING, BY DIPPING.
11. CAST-IN-PLACE OR PRECAST UNITS MUST MEET THE REQUIREMENTS OF TECHNICAL SPECIFICATIONS SECTIONS 200 AND 302.

YARD DRAIN

PIPES LESS THAN OR EQUAL TO 24"
MAXIMUM DEPTH = 10'

1 REVISED 5/19

REFERENCE
200,502

CATEGORY
CONCRETE ITEMS

DATE
11/18

SHEET No.
2 OF 2

DETAIL No.
DS_05