

BEAD FUNDING UPDATE
FOR
SOUTHSIDE NETWORK AUTHORITY (SNA)
OCTOBER 13, 2023





Noel Mitchell

Pat Coady

Executive VP - SPARQ



GLOBAL TECHNICAL SYSTEMS

BEAD Specialist



GLOBAL TECHNICAL SYSTEMS

SPARQ ✓
a GTS company



Provider – Lead application process and deploy projects

Member Cities

Input – Provide data and resources

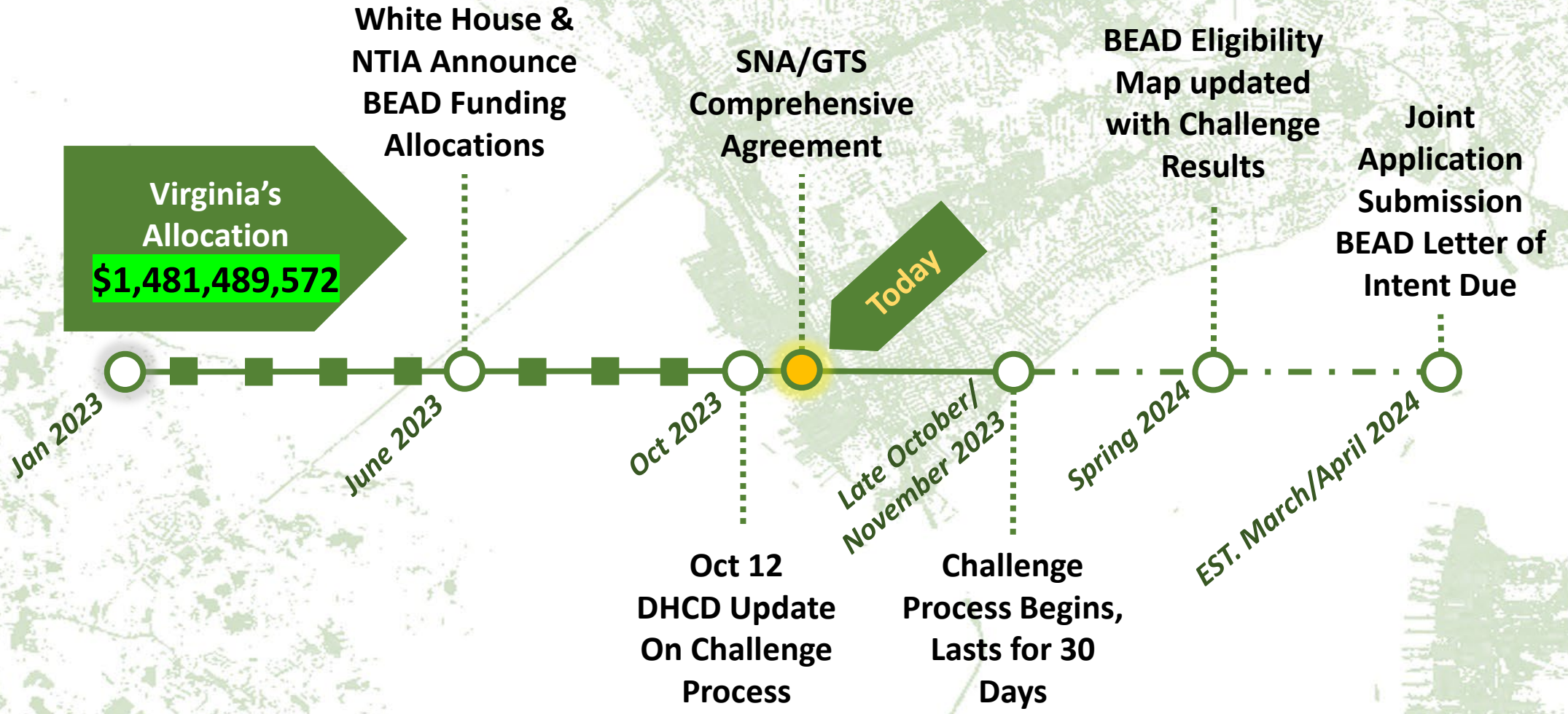


Voice – Promote outreach efforts and advocate for HR



WHEN

BEAD TIMELINE





BEAD Program Successful Application Metrics

Funding Overview: \$1,481,489,572 Total Available for VA (6th Highest in US)

BEAD Available Funding	Proposed scoring category (weight)	GTS Strategy
Primary criteria: must comprise of a total of at least 75%	<ul style="list-style-type: none"> Minimal BEAD program outlay (45%) Affordability (20%) Fair labor practices (10%) 	<ul style="list-style-type: none"> Maximize project for un/underserved and Community Anchors Allocate proposed funding for affordability/digital equity Prioritize fair labor and regional workforce
Must be given some weight	<ul style="list-style-type: none"> Speed of deployment (5%) 	<ul style="list-style-type: none"> GTS has an experienced team to efficiently meet or exceed deployment timeline
Optional criteria (weight cannot exceed any of the primary criteria)	<ul style="list-style-type: none"> Broadband provider has consulted local government (10%) Broadband provider has received letter of support from local government (10%) 	<ul style="list-style-type: none"> Continue strong partnership with SNA



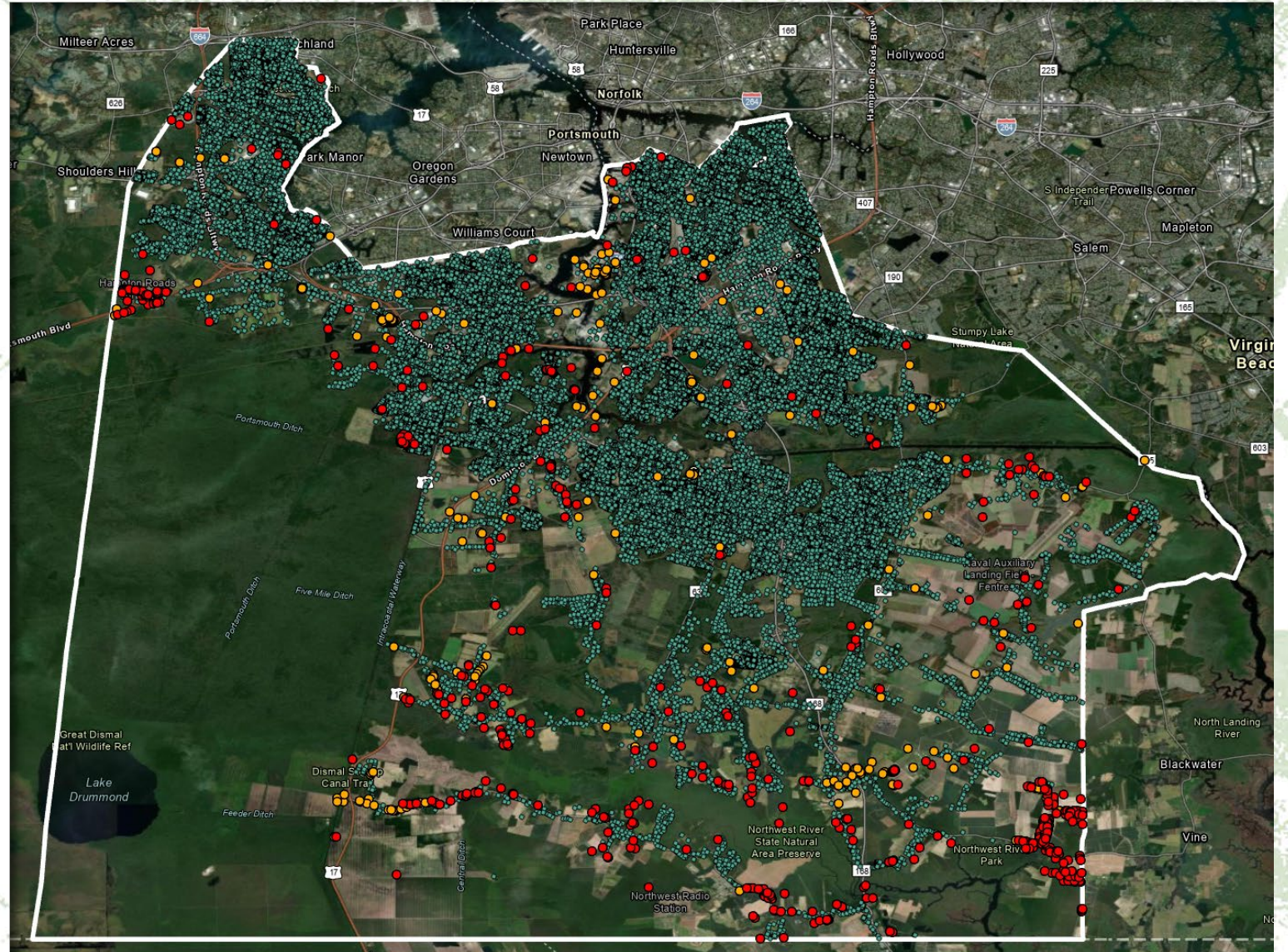
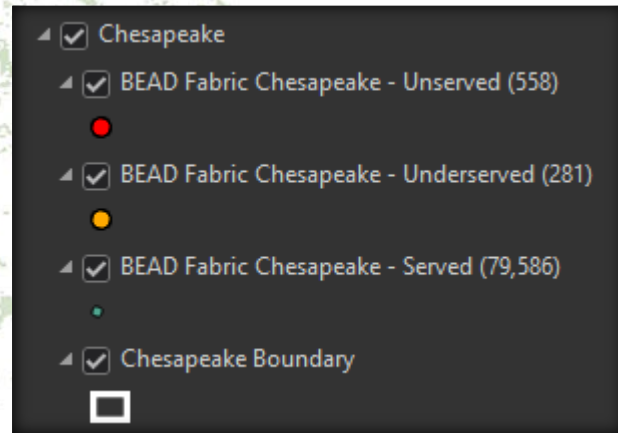
BEAD Address Fabric Existing Serviceability

DHCD published data for unserved and underserved that relates to the FCC's Broadband Map, removing all active projects to serve as the basis for BEAD challenges and funding.

City:	Unserved BSLs	Underserved BSLs	FCC Broadband Serviceable Location (BSL) Count
Chesapeake	558	281	79,586
Norfolk	118	46	61,607
Portsmouth	40	35	33,007
Suffolk	849	325	33,653
Virginia Beach	495	142	136,737

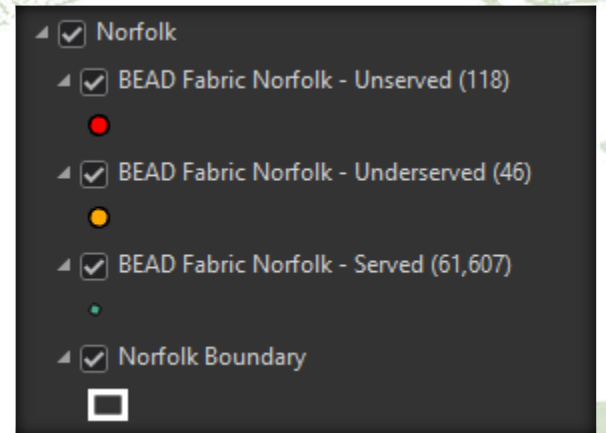


DHCD Published BEAD Data - Chesapeake



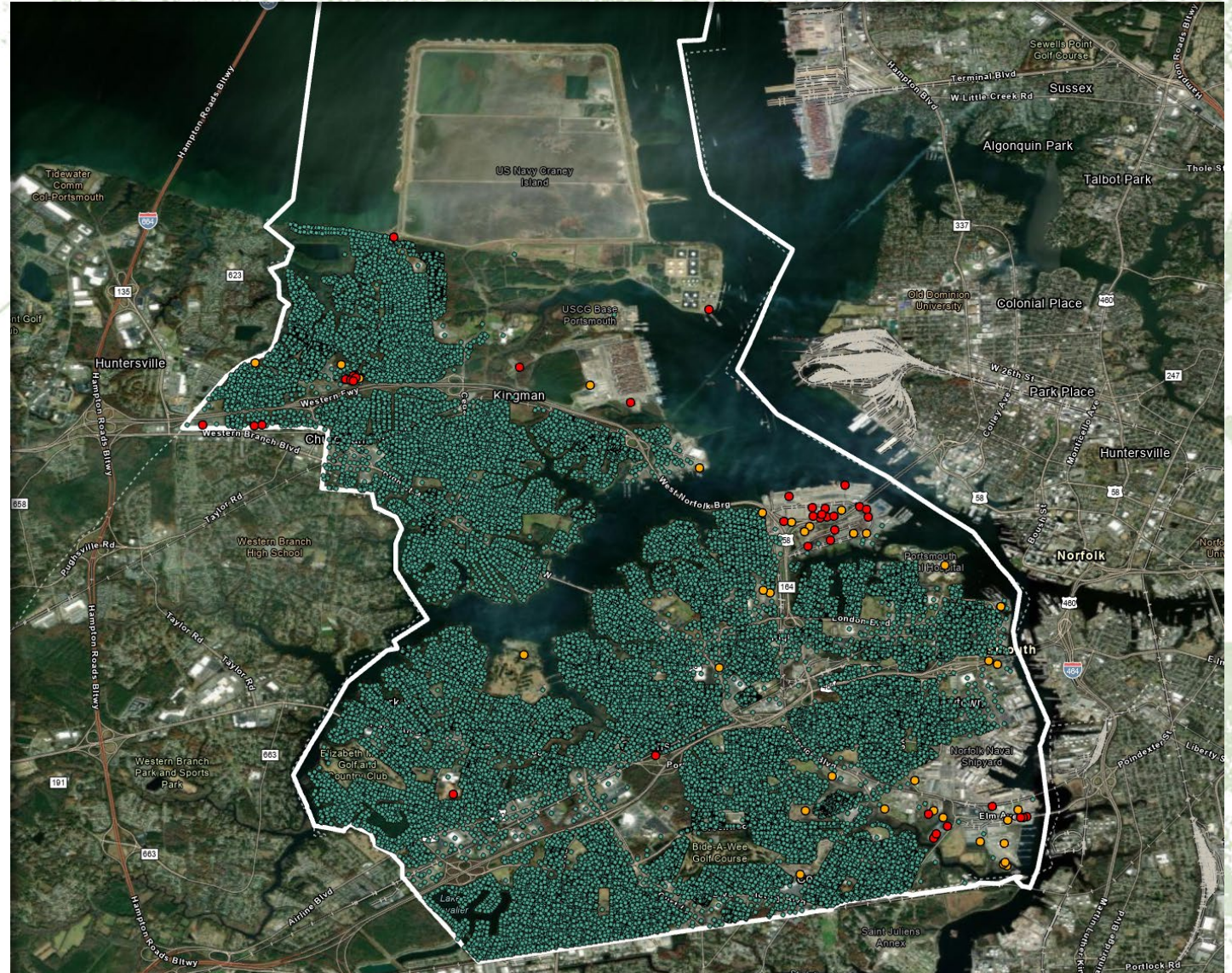
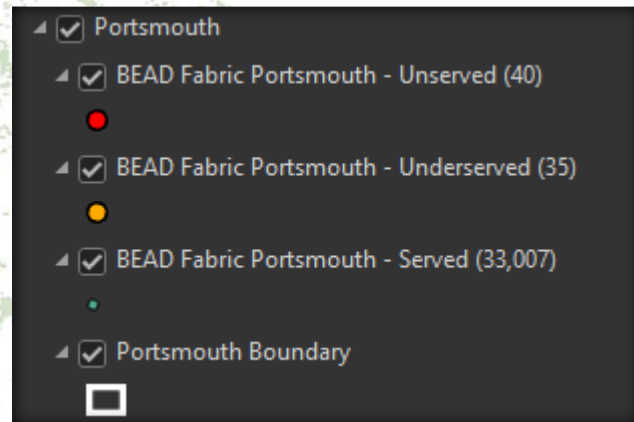


DHCD Published BEAD Data - Norfolk



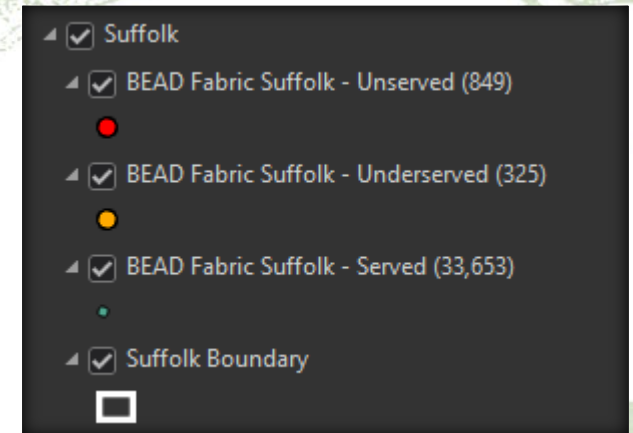
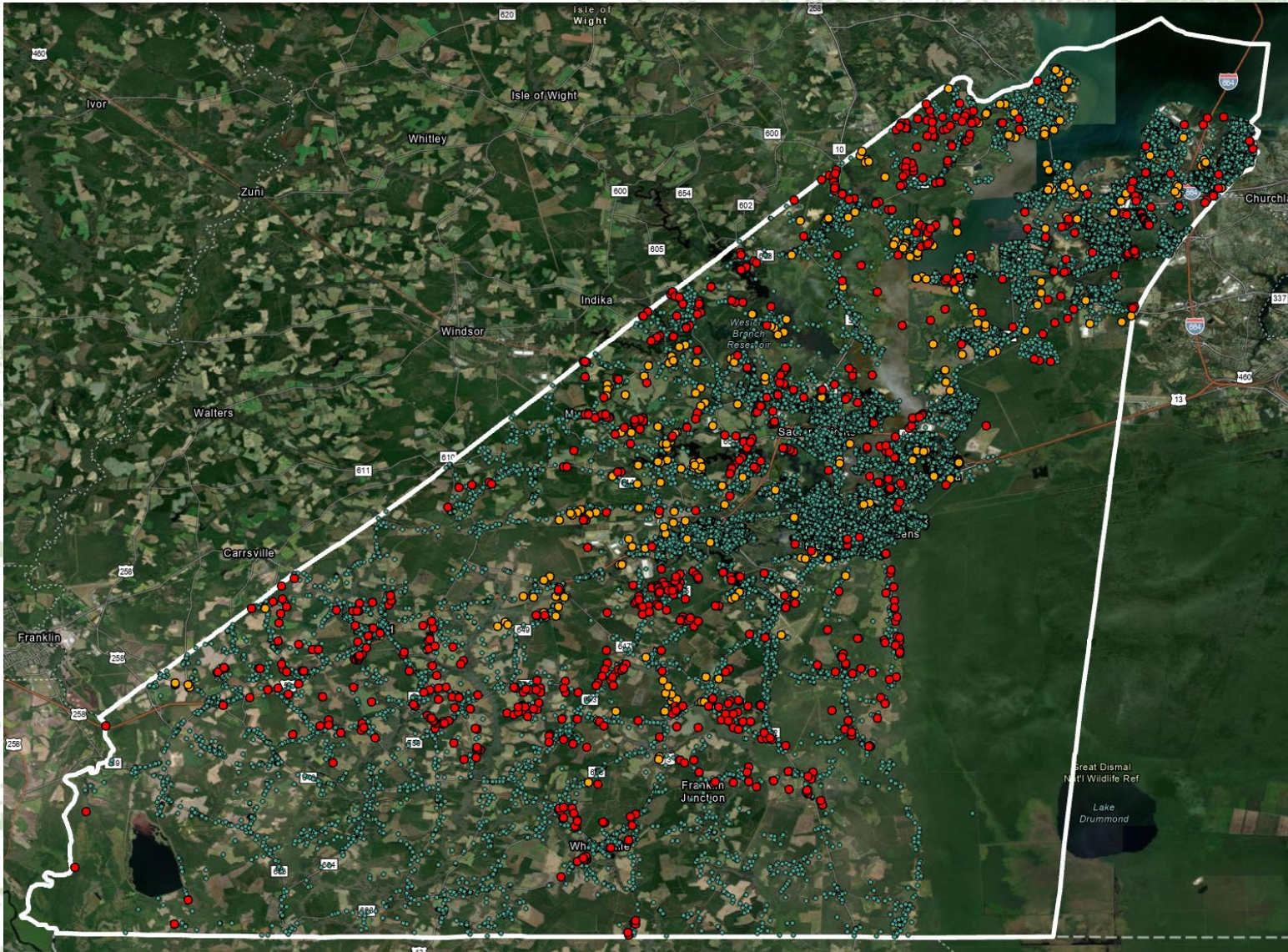


DHCD Published BEAD Data - Portsmouth



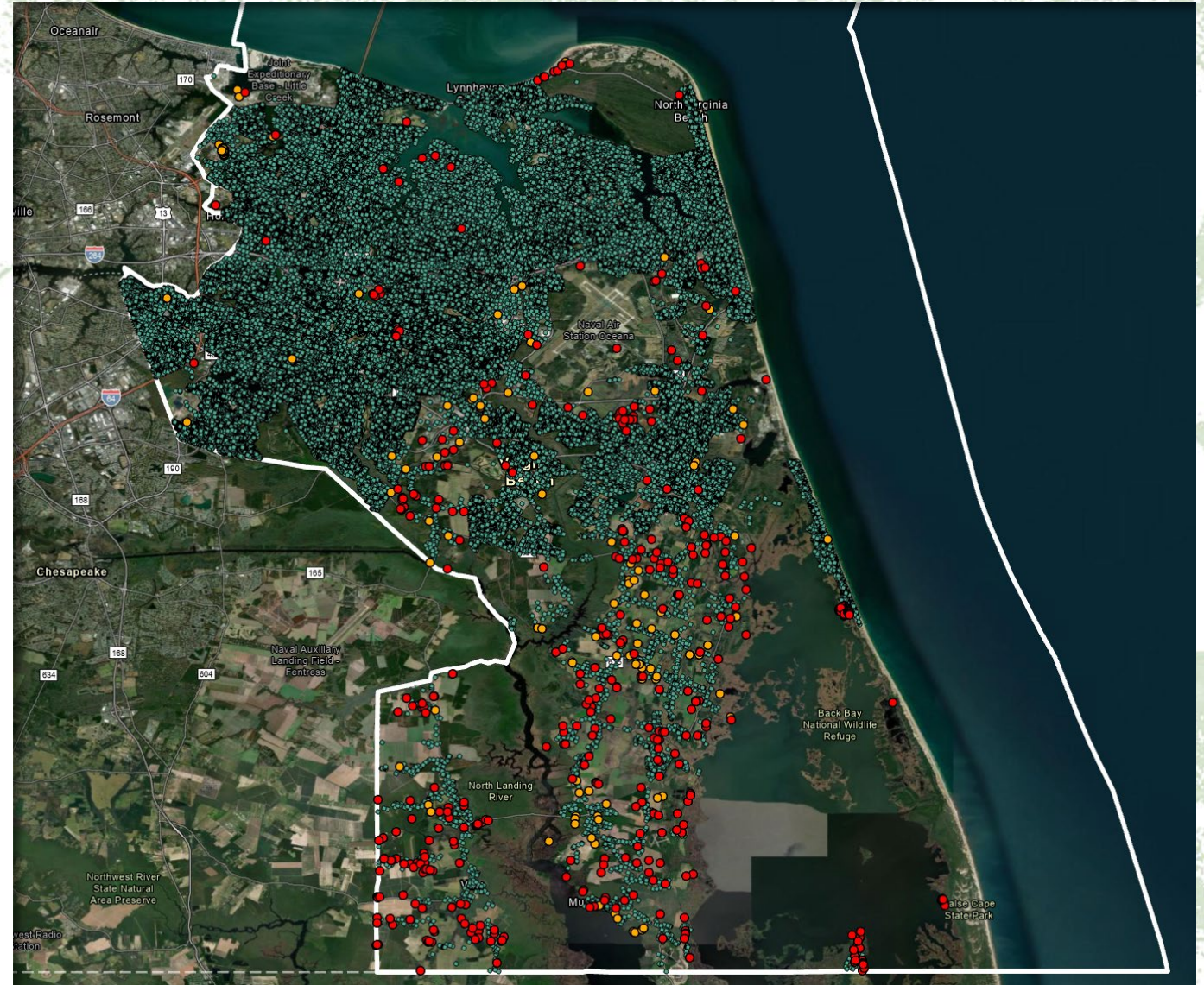
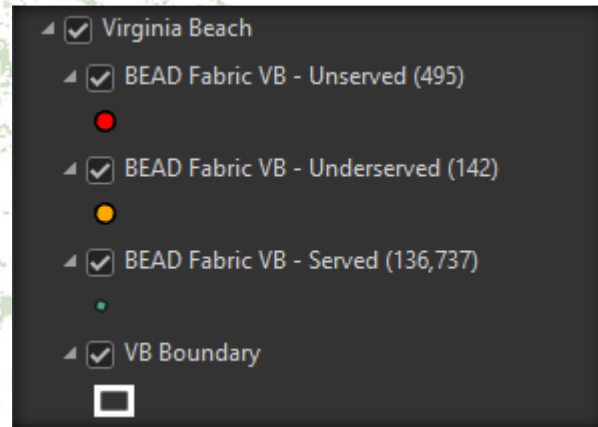


DHCD Published BEAD Data - Suffolk





DHCD Published BEAD Data – Virginia Beach



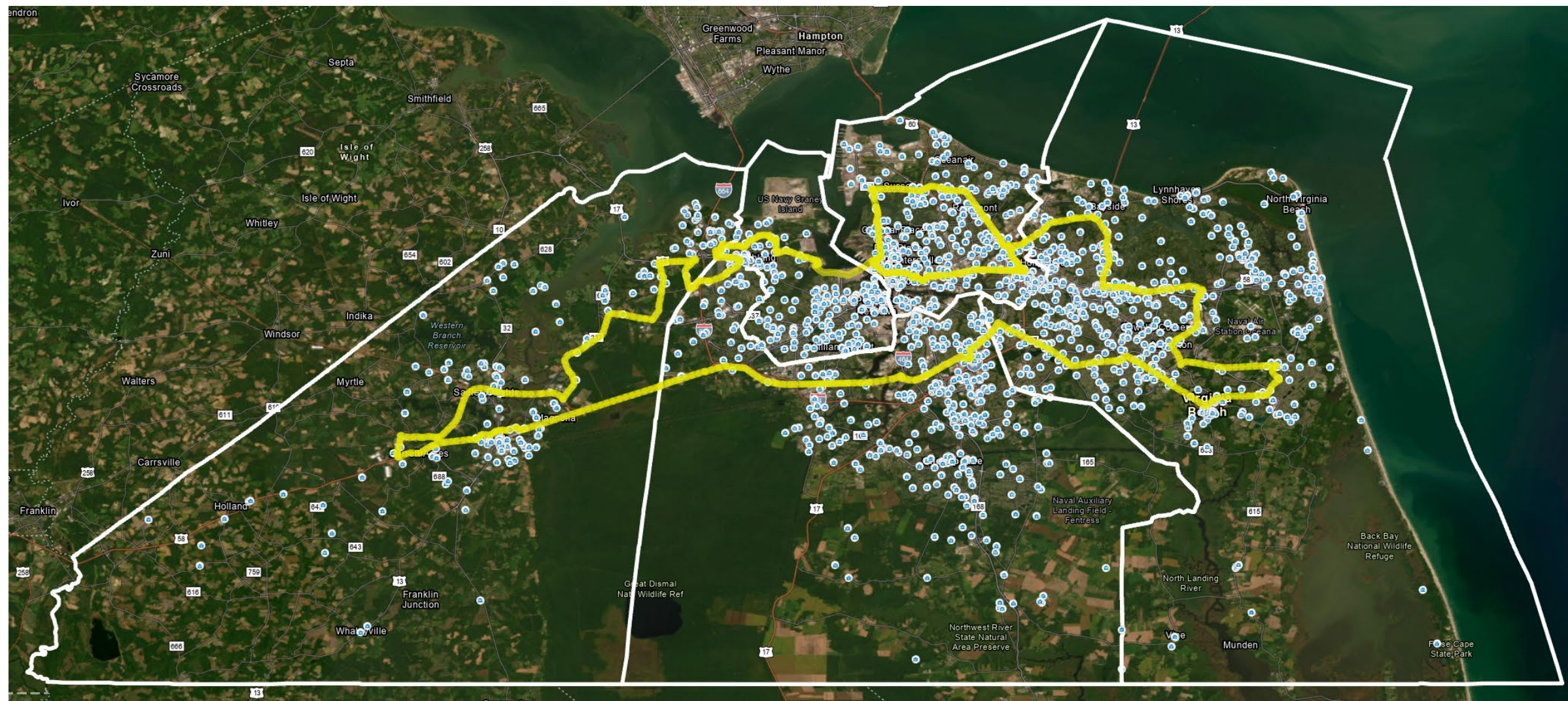


BEAD Community Anchor Eligibility

These locations will also be eligible for funding if lacking service at ***1 Gbps Symmetrical***.

City:	Eligible CAs - Unserved by 1 Gbps Symmetrical from FCC
Chesapeake	394
Norfolk	510
Portsmouth	217
Suffolk	218
Virginia Beach	694

BEAD Community Anchors – 2,033 Total Eligible



Hampton Roads RCR Routes



Southside CAs - 1 GB Symm Unreserved





Challenge Strategy

- Challenge process is to maximize funding for region by giving full visibility to un/underserved and make sure Community Anchors are represented
- DHCD released a speedtest tool that relates to the BEAD address fabric to identify challenges.
- GTS will continue partnering with the cities to collect data for service refinement. Will provide the preliminary dataset after this meeting for initial feedback.

BEAD Challenge Process

Driven by DHCD



Survey Link:

<https://connectingvirginia.com/>

(soon to be launched)



English (English) [v]

Home

Make sure you get the broadband you deserve

Help bring strong, reliable broadband across Virginia. Take the free two minute test or see the broadband map of Virginia.

Test Your Internet

See Map

Learn More →

This portal will service as the basis for citizen input challenges.

Speeds tests must be taken **3 times on 3 separate days** for a suitable challenge, per NTIA guidelines.

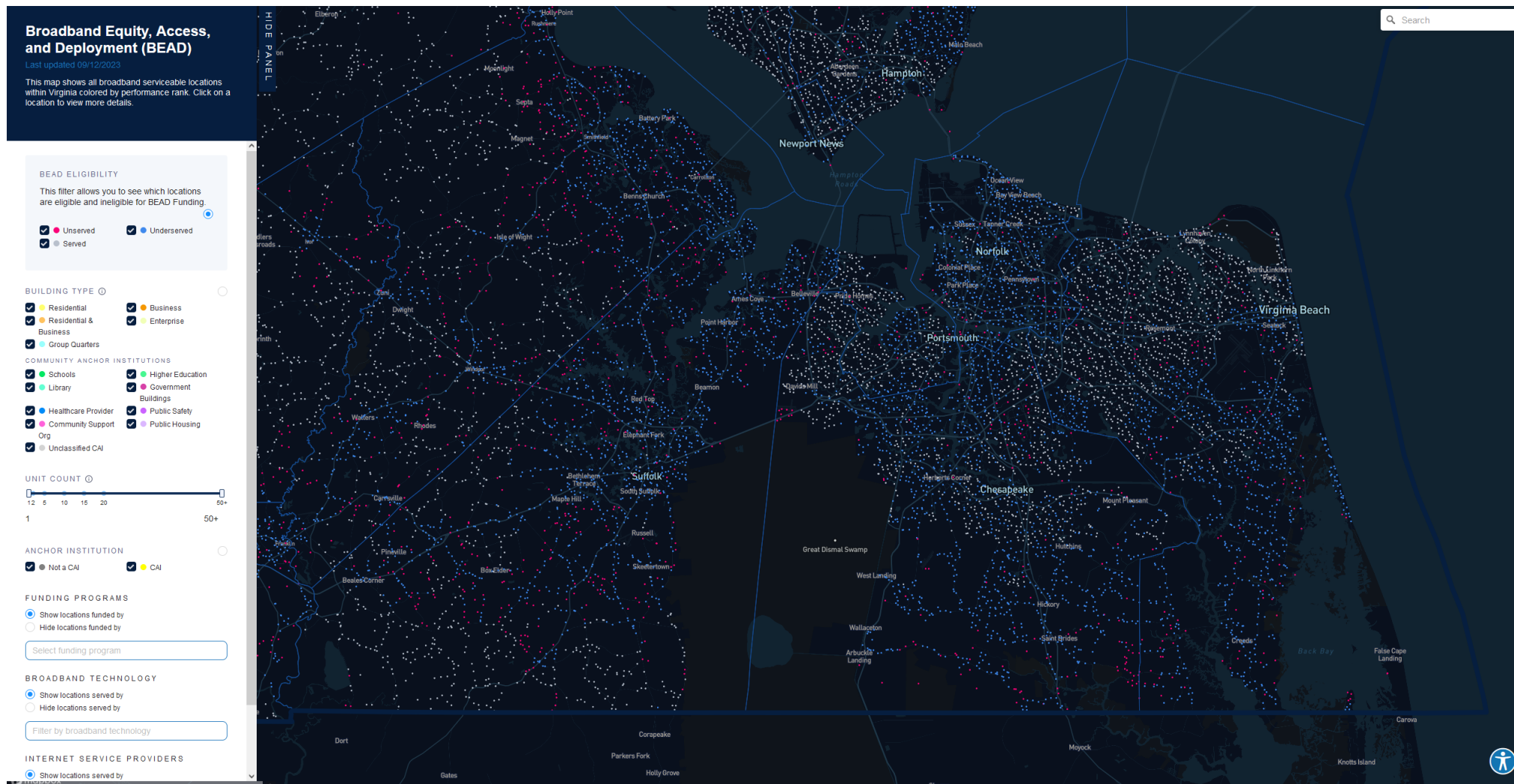
Speeds tests are automatically recorded on the backend for DHCD to validate.

BEAD Challenge Process

Driven by DHCD



BEAD Eligible Location by Status Map (will be updated in real time with challenge results)





What we can do:

Steps

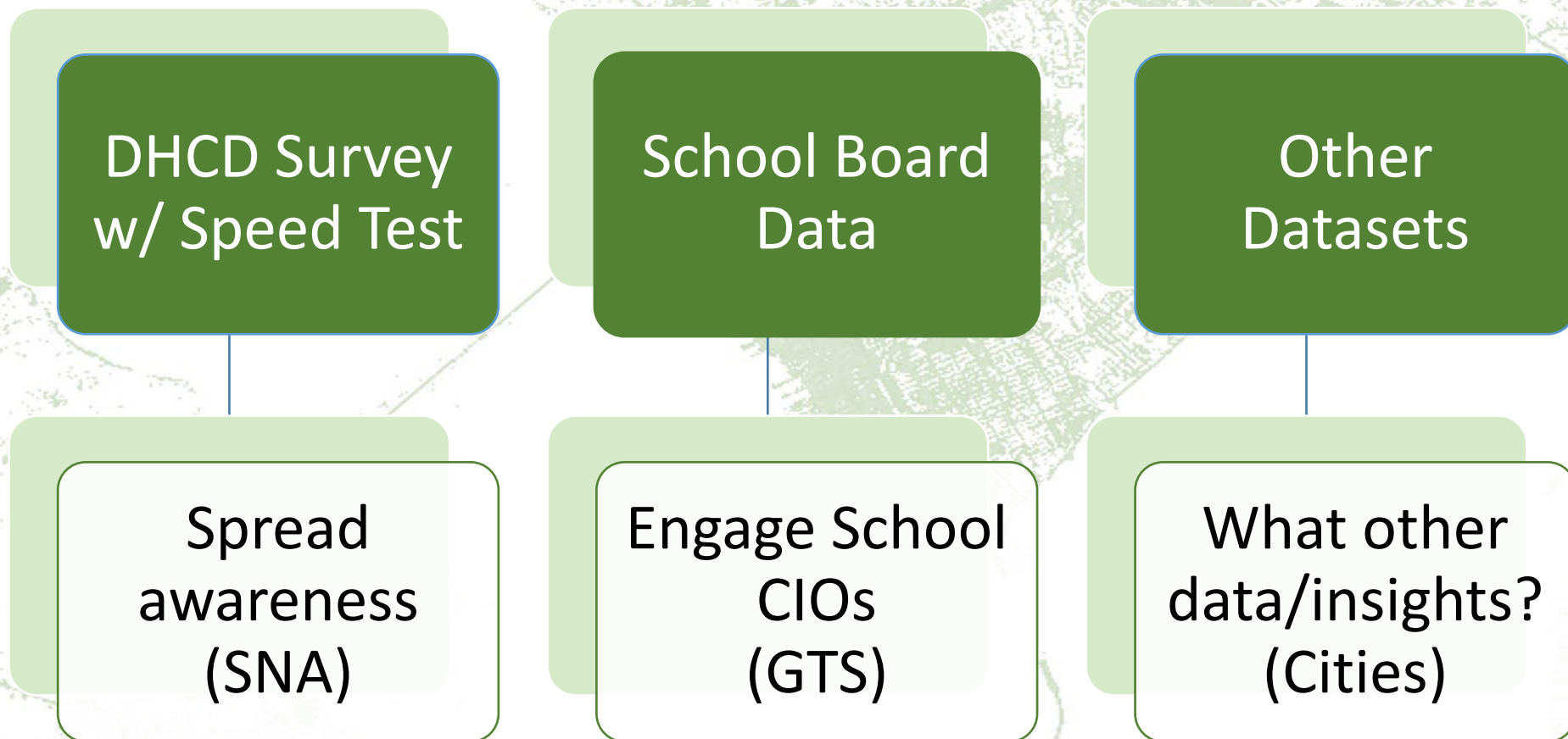
Will hand off BSL and CAI layers to each county, return feedback by 11/3

Conduct methods of data refinement (*next slide*) to identify challenges from regional side, then push to DHCD

DHCD will engage each city individually to certify final list of challenges, combining survey results and our own data



METHODS OF SERVICE DATA REFINEMENT





BEAD Program Challenge

Key Takeaways/Next Steps

Challenge Refinement -

- **SNA** – Voice to spread awareness for DHCD survey
- **GTS** – Conduct outreach to CIOs, other entities that can provide serviceability data for challenge refinement, field verify potential challenge areas
- **Cities** – Provide feedback on BEAD BSL and CAI data, identify other sources of data from a city-resource perspective (local knowledge, non-profits, etc.)

Application Readiness -

- GTS will keep up-to-date with all DHCD developments and plan around criteria to put forward most compelling application possible

QUESTIONS AND ANSWERS

BEAD Point-Of-Contact
Noel Mitchell
EVP SPARQ Network Communications
757-468-8751 x5144
Noel.mitchell@gts.us.com